



jordan fishwick

DIDSBURY
Ballbrook Court



Ballbrook Court, Didsbury, M20 3GT

Guide Price £300,000

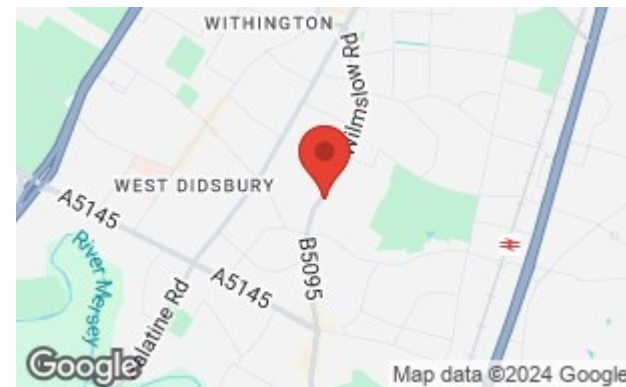


The Property

A purpose built, **THREE DOUBLE BEDROOM**, top floor apartment, enjoying a **FAVOURABLE POSITION** towards the rear of a **POPULAR** purpose built development, being within easy reach of both Didsbury & West Didsbury Villages and the Metrolink. Gas central heating is installed, alongside uPVC double glazed windows, in outline:- Communal entrance hall and stairs to all floors, private entrance hall over 17ft, spacious living room, fitted kitchen with a range of units, three double bedrooms, the main having built-in wardrobe/storage space and a bathroom with four-piece white suite. In addition, there is a large external storage cupboard, well tended communal grounds and ample parking. **NO CHAIN**

Directions

M20 3GT



- Three double bedrooms
- Top floor position
- Short walk to Didsbury Village
- Spacious Living area
- Purpose built development
- Modern Fitted Kitchen
- Four piece bathroom suite
- Residents parking
- Council Tax Band - C / EPC Rating - E
- No onward chain

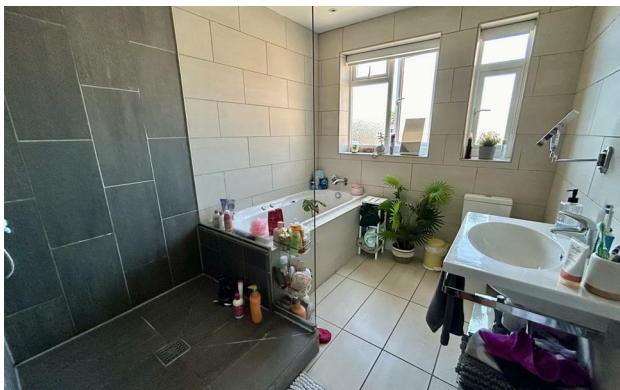
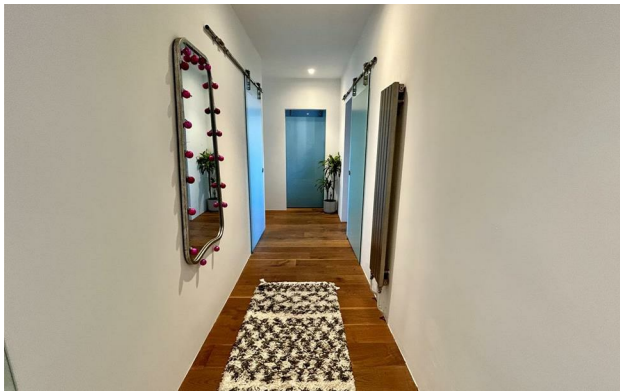
Postcode - M20 3GT

EPC Rating - E

Floor Area - 823.00 sq ft

Local Authority - Manchester City Council

Council Tax - C



823 sq.ft. (76.4 sq.m.) approx.



TOTAL FLOOR AREA : 823 sq.ft. (76.4 sq.m.) approx.
Measurements are approximate. Not to scale. Illustrative purposes only.
Made with Metropix ©2024



These particulars are believed to be accurate but they are not guaranteed and do not form a contract. Neither Jordan Fishwick nor the vendor or lessor accept any responsibility in respect of these particulars, which are not intended to be statements or representations of fact and any intending purchaser or lessee must satisfy himself by inspection or otherwise as to the correctness of each of the statements contained in these particulars. Any floorplans on this brochure are for illustrative purposes only and are not necessarily to scale.

Offices also at: Wilmslow, Macclesfield, Hale, Sale, Chorlton, Glossop, Manchester & Salford

757-759 Wilmslow Road, Didsbury Village, Manchester

0161 445 4480

didsbury@jordanfishwick.co.uk
www.jordanfishwick.co.uk