



jordanfishwick

Ashfell Court
Chorlton



Ashfell Court Chorlton M21 9HE

£1,195 Per Calendar Month



The Property

***** AVAILABLE NOW ***** We are delighted to offer back to the market this two double bedroom apartment benefitting from both off road parking and Garage. The Apartment is set within large, mature communal gardens and in the highly regarded Ashfell Court. Perfectly situated just a few minutes from Chorlton Village, Beech Road all local amenities and Transport links. This light bright flat provides spacious accommodation throughout and will prove ideal for a young couple or single professional. The accommodation briefly comprises: hallway accessed via a clean and tidy communal entrance hall, 16ft Lounge, large double glazed window providing views over the gardens, modern fitted kitchen, two well proportioned double bedrooms, the main being 15ft, bathroom fitted with a three piece suite and there are multiple storage cupboards throughout. Shared off road parking is available to residents of Ashfell Court. Electric underfloor heating and double glazing throughout completes the impressive specification. Viewing highly recommended.

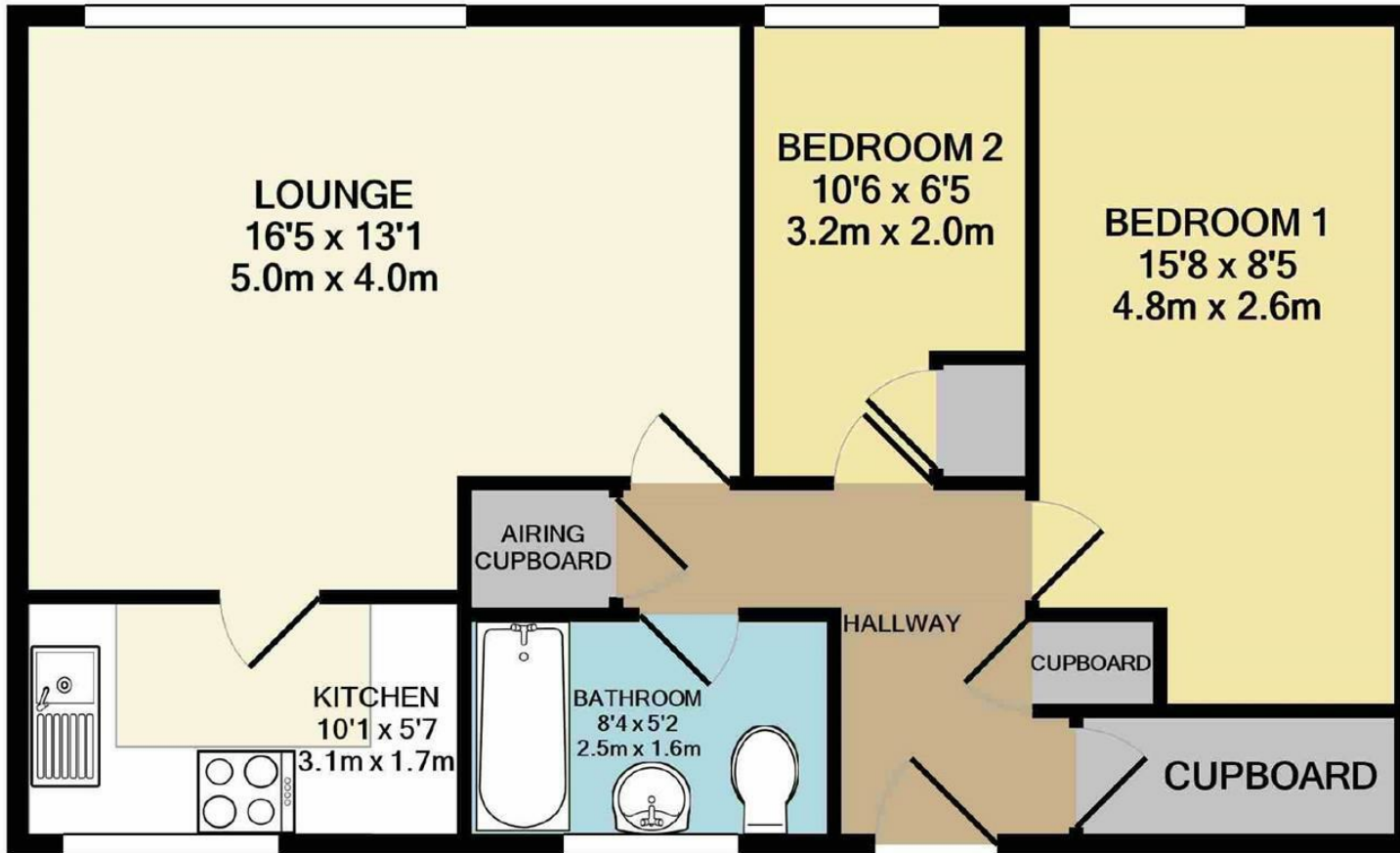
***** To arrange a viewing please call 016 393 7539 *****

Directions

- Council Tax band B - EPC E
- 2 Double Bedrooms
- Unfurnished
- Ground Floor
- Spacious Accomodation
- Garage & Off road parking
- Available Now

Postcode - M21 9HE
EPC Rating - E
Floor Area - sq ft
Local Authority - Manchester
Council Tax - B





TOTAL APPROX. FLOOR AREA 584 SQ.FT. (54.2 SQ.M.)

Measurements are approximate. Not to scale. Illustrative purposes only

Made with Metropix ©2021



These particulars are believed to be accurate but they are not guaranteed and do not form a contract. Neither Jordan Fishwick nor the vendor or lessor accept any responsibility in respect of these particulars, which are not intended to be statements or representations of fact and any intending purchaser or lessee must satisfy himself by inspection or otherwise as to the correctness of each of the statements contained in these particulars. Any floorplans on this brochure are for illustrative purposes only and are not necessarily to scale.

Offices at: Offices at Chorlton, Didsbury, Disley, Hale, Glossop, Macclesfield, Manchester Deansgate, Manchester Whitworth Street, New Mills, Sale, Wilmslow and Withington

410-412 Barlow Moor Road, Chorlton, Manchester, M21 8AD

www.jordanfishwick.co.uk