



Jordan fishwick

51 Derby Road, M14 6UX
£2,500 Per Calendar Month



Derby Road Fallowfield M14 6UX

£2,500 Per Calendar Month



The Property


View our Virtual Tour Here - <https://youtu.be/HTQDtHfGEQQ>

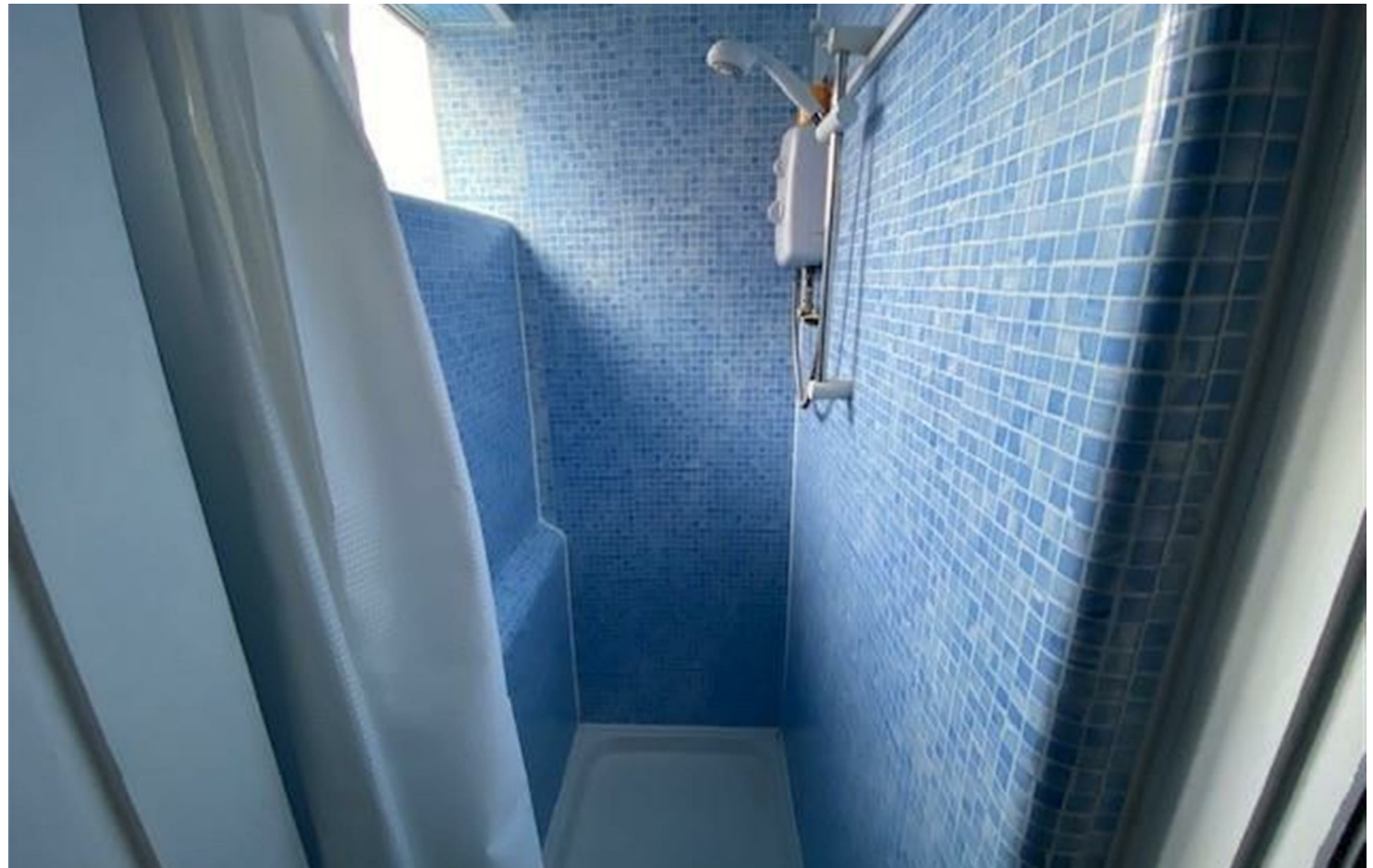
*** AVAILABLE 1st JULY 2025 *** £115.00 PPPW *** STUDENT HOME *** HALF PRICE RENT FOR JULY *** A five double bedroom semi-detached student home for the academic year 2025/26. The property has the following features; double bedroom, large open plan lounge and kitchen, downstairs shower room. To the first floor a further four doubles, small study room, second shower room with a separate WC. Outside is parking and a garden. Double glazing throughout. Call Withington 0161 438 2411 to arrange a viewing.

EPC Rating - D

- Available July 2025
- £115.00 PPPW
- Five Double Bedrooms
- Two Bathrooms
- Student Property
- Garden & Parking
- Fully Furnished
- Half price rent July
- Council Tax Band C
- EPC Rating D



Energy Efficiency Rating		
	Current	Potential
Very energy efficient - lower running costs		
(92 plus) A		
(81-91) B		81
(69-80) C	67	
(55-68) D		
(39-54) E		
(21-38) F		
(1-20) G		
Not energy efficient - higher running costs		
England & Wales	EU Directive 2002/91/EC 	





These particulars are believed to be accurate but they are not guaranteed and do not form a contract. Neither Jordan Fishwick nor the vendor or lessor accept any responsibility in respect of these particulars, which are not intended to be statements or representations of fact and any intending purchaser or lessee must satisfy himself by inspection or otherwise as to the correctness of each of the statements contained in these particulars. Any floorplans on this brochure are for illustrative purposes only and are not necessarily to scale.

Offices at: Offices at Chorlton, Didsbury, Disley, Hale, Glossop, Macclesfield, Manchester Deansgate, Manchester Whitworth Street, New Mills, Sale, Wilmslow and Withington