



*jordan fishwick*

**WILMSLOW**  
Green Hall Mews



## Green Hall Mews, Wilmslow, SK9 1LP

£1,500 PCM



### The Property

AVAILABLE NOW FURNISHED OR UNFURNISHED - VIEWING ESSENTIAL TO APPRECIATE

Located in the heart of Wilmslow is this two bedroom second floor apartment. Having just undergone a FULL REFURBISHMENT and presented in IMMACULATE condition this is a property that should not be missed. Entrance hall with storage, open plan lounge fully fitted kitchen diner with large windows with views towards the town centre which flood the living area with light, two good sized double bedrooms with sunny aspects, bathroom with shower over bath.

Gas central heating, off road parking, communal gardens  
Contact Wilmslow 01625 536300 £1500.00pcm  
COUNCIL TAX D  
EPC C

### Directions

SK9 1LP



- TWO DOUBLE BEDROOMS
- TOP FLOOR APARTMENT
- CENTRAL LOCATION
- WALKING DISTANCE OF TRAIN STATION
- GARAGE
- OFF ROAD PARKING
- COUNCIL TAX D
- EPC C

Postcode - SK9 1LP

EPC Rating - C

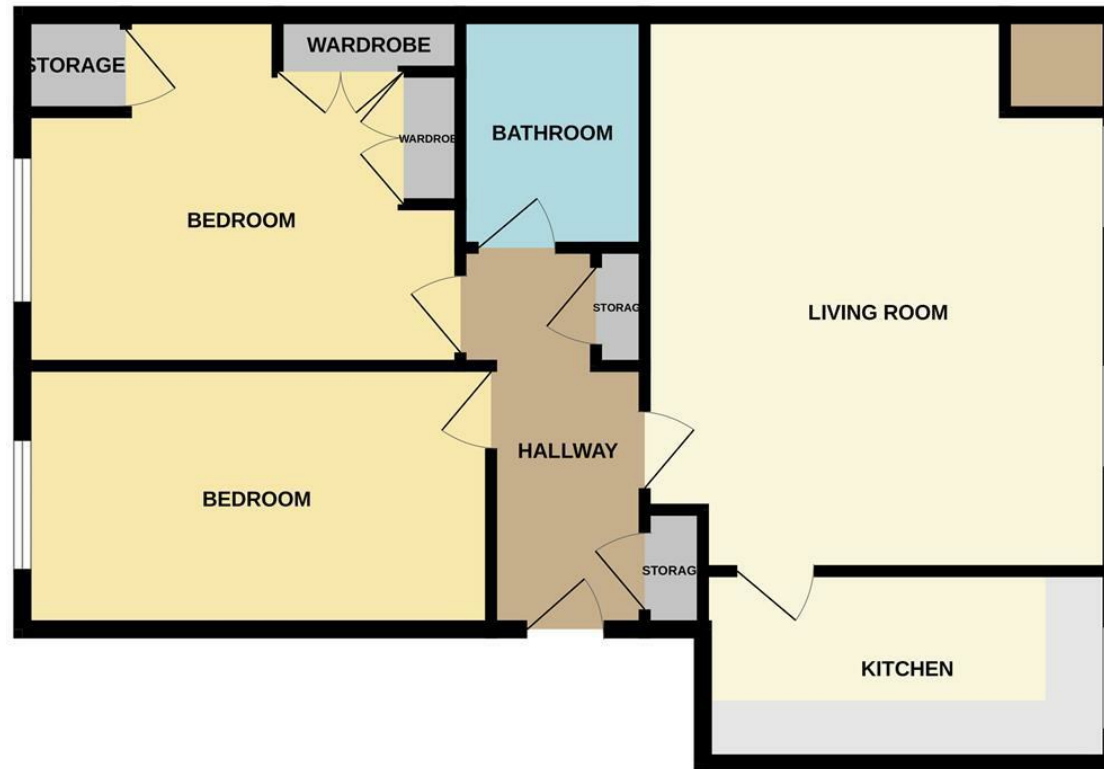
Floor Area - sq ft

Local Authority - Cheshire East

Council Tax - D



## GROUND FLOOR



Measurements are approximate. Not to scale. Illustrative purposes only  
Made with Metropix ©2023



These particulars are believed to be accurate but they are not guaranteed and do not form a contract. Neither Jordan Fishwick nor the vendor or lessor accept any responsibility in respect of these particulars, which are not intended to be statements or representations of fact and any intending purchaser or lessee must satisfy himself by inspection or otherwise as to the correctness of each of the statements contained in these particulars. Any floorplans on this brochure are for illustrative purposes only and are not necessarily to scale.

Offices at: Chorlton, Didsbury, Disley, Hale, Glossop, Macclesfield, Manchester Deansgate, Manchester Whitworth Street, New Mills, Sale, Wilmslow and Withington

01625 536300

wilmslow@jordanfishwick.co.uk  
www.jordanfishwick.co.uk