



Jordan fishwick

WILMSLOW
Mainwaring Drive



Mainwaring Drive, Wilmslow, SK9 2QD

£2,750 PCM



The Property

AVAILABLE NOW PART FURNISHED - VIEWING HIGHLY RECOMMENDED

Located on the ever popular Summerfields development is this attractive detached. Being within easy reach of the A34 and local shops along with Manchester International Airport, Wilmslow town centre and Alderley village only a short drive away this fabulous family home is presented in excellent order and is sure to appeal to the growing family.

Entrance hall, downstairs WC, lounge leading to spacious dining kitchen with doors to fully enclosed rear garden, further good sized reception/ family room.

To the first floor five well proportioned bedrooms, main bedroom with en suite bathroom, family bathroom with shower over bath

Off road parking. Fully enclosed rear garden

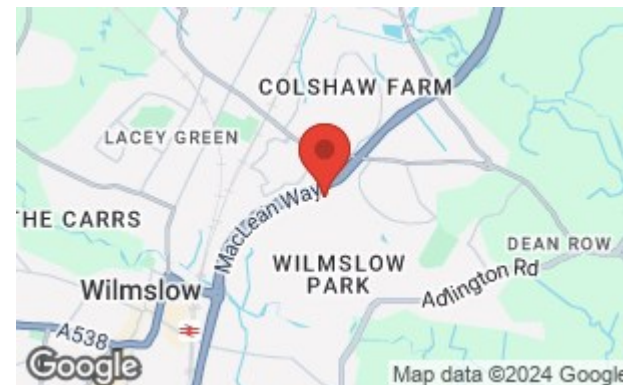
Contact Wilmslow 01625 536300 £2750.00pcm

COUNCIL TAX E

EPC C

Directions

SK9 2QD



- DETACHED
- FIVE BEDROOMS
- TWO BATHROOMS
- FULLY ENCLOSED REAR GARDEN
- CLOSE TO A34 AND AIRPORT
- COUNCIL TAX E
- EPC C

Postcode - SK9 2QD

EPC Rating -

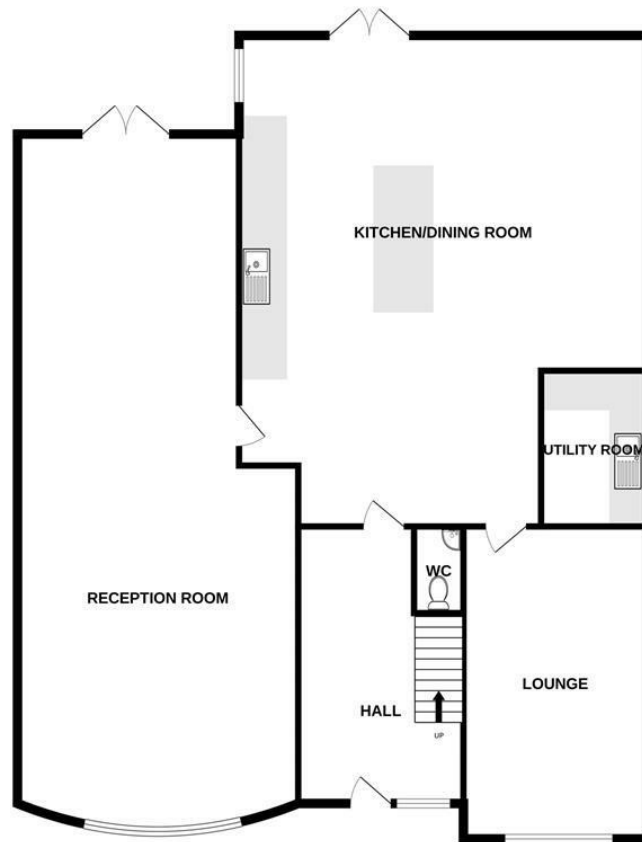
Floor Area - sq ft

Local Authority - Cheshire East

Council Tax - E



GROUND FLOOR



1ST FLOOR



Measurements are approximate. Not to scale. Illustrative purposes only
Made with Metropix ©2024



These particulars are believed to be accurate but they are not guaranteed and do not form a contract. Neither Jordan Fishwick nor the vendor or lessor accept any responsibility in respect of these particulars, which are not intended to be statements or representations of fact and any intending purchaser or lessee must satisfy himself by inspection or otherwise as to the correctness of each of the statements contained in these particulars. Any floorplans on this brochure are for illustrative purposes only and are not necessarily to scale.

Offices at: Chorlton, Didsbury, Disley, Hale, Glossop, Macclesfield, Manchester Deansgate, Manchester Whitworth Street, New Mills, Sale, Wilmslow and Withington

01625 536300

wilmslow@jordanfishwick.co.uk
www.jordanfishwick.co.uk