

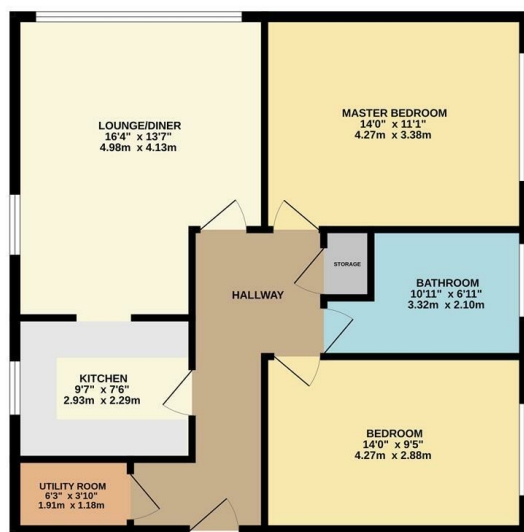


7 LACEY COURT WILMSLOW SK9 4BH

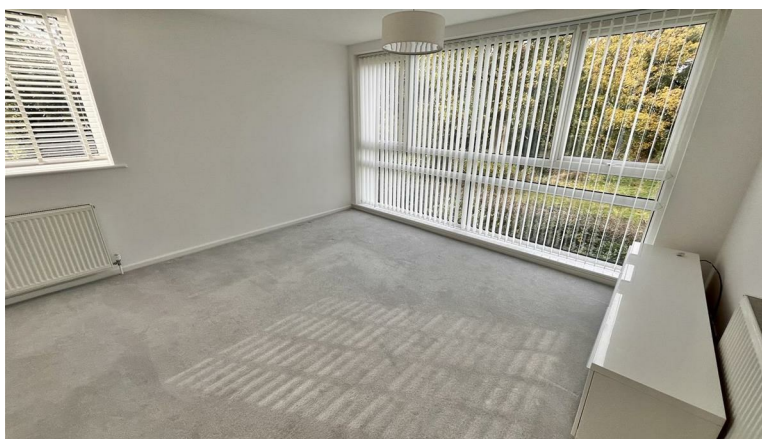
NO CHAIN > A stylish two double bedroom first floor apartment located within walking distance of Wilmslow town centre and the train station. Located on Lacey Green within the ever popular Lacey Court development this apartment also benefits from a garage which provides additional storage. In brief this spacious apartment (arguably having the best views in the block) comprise: an entrance hallway with access to the internal accommodation and a large storage/utility cupboard which houses the gas boiler and has fitted units offering space for a washing machine. There is a large L shaped lounge diner with windows to two sides providing a large source of natural light and views over the rear parkland. The kitchen is fitted with a stylish and matching range of wall and base units with complementary work surfaces. Additionally there are a number of integrated appliances within the kitchen which include a fridge, freezer, dishwasher, microwave, oven and hob. The two double bedrooms have been tastefully decorated throughout and are spacious. There is a modern and stylish refitted bathroom suite. Externally the property benefits from a garage (number Nine) and there are well tended and maintained communal gardens and a residents car park.



GROUND FLOOR



Measurements are approximate. Not to scale. Intentional purposes only. Made with SketchUp 2020.



- First Floor Apartment
- Two Double bedrooms
- Garage
- Great views
- Modern Kitchen
- Integrated Appliances
- Modern Bathroom
- No Chain

