



jordan fishwick

Meadowside Newtown Disley Stockport

Meadowside Newtown Disley Stockport SK12 2RD

£239,950



The Property

Located on a popular side street ideally positioned for Newtown railway station, a stone built bay fronted terraced property. Updated and improved in recent years, this delightful property is offered for sale with no chain. Also boasting off road parking and comprising: entrance vestibule, living room, inner hall, dining kitchen, ground floor bathroom, two generous first floor bedrooms and a shower room. Pvc double glazing and gas central heating. Viewing recommended.



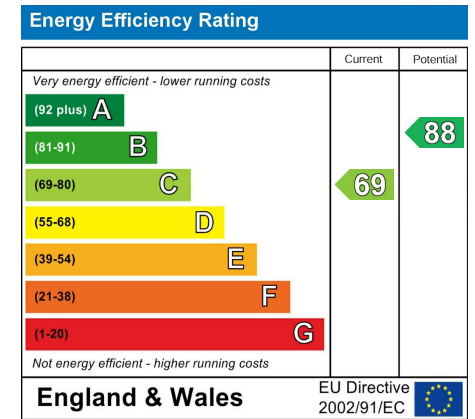
- Bay Fronted Mid Terrrace Property
- Off Road Parking
- Popular Location
- TWO DOUBLE BEDROOMS
- Convenient For Newtown Railway Station
- Pvc Double Glazing and Gas Central Heating
- Well Presented
- Bathroom and Shower Room

Postcode SK12 2RD

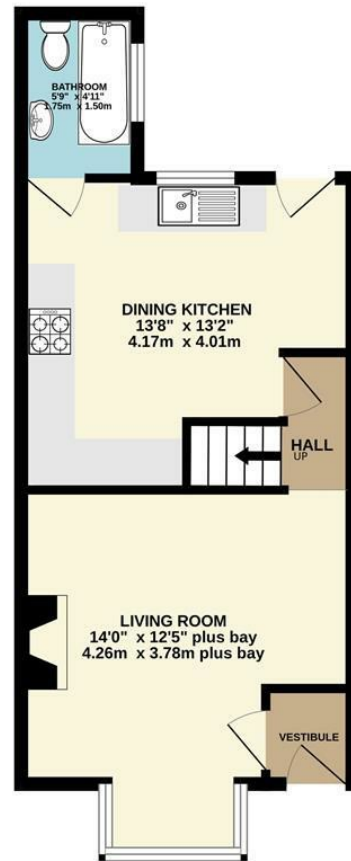
EPC Rating C

Local Authority Cheshire East

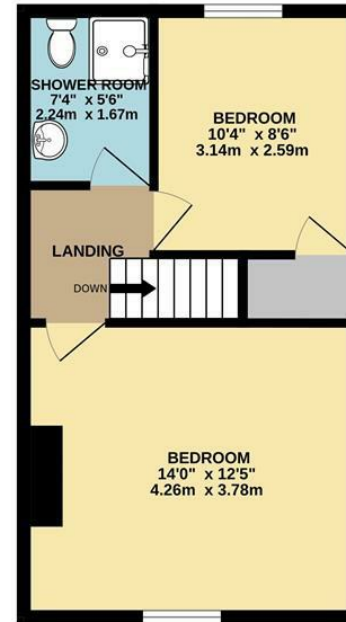
Council Tax B



GROUND FLOOR



1ST FLOOR



Whilst every attempt has been made to ensure the accuracy of the floorplan contained here, measurements of doors, windows, rooms and any other items are approximate and no responsibility is taken for any error, omission or mis-statement. This plan is for illustrative purposes only and should be used as such by any prospective purchaser. The services, systems and appliances shown have not been tested and no guarantee as to their operability or efficiency can be given.
Made with Metropix ©2024



These particulars are believed to be accurate but they are not guaranteed and do not form a contract. Neither Jordan Fishwick nor the vendor or lessor accept any responsibility in respect of these particulars, which are not intended to be statements or representations of fact and any intending purchaser or lessee must satisfy himself by inspection or otherwise as to the correctness of each of the statements contained in these particulars. Any floorplans on this brochure are for illustrative purposes only and are not necessarily to scale.

Offices at: Chorlton, Didsbury, Disley, Hale, Glossop, Macclesfield, Manchester Deansgate, Manchester Whitworth Street, New Mills, Sale, Wilmslow and Withington

14 Market Street, Disley, Cheshire, SK12 2AA

01663 76 78 78

disley@jordanfishwick.co.uk

www.jordanfishwick.co.uk