



*Jordan fishwick*

Cotton Close Whaley Bridge High Peak



## Cotton Close Whaley Bridge High Peak SK23 7GG

£580,000



### The Property

Located on small popular development and enjoying a secluded, wooded rear aspect, a beautifully presented and deceptively spacious, five double bedroom detached family home. Within easy reach of Whaley Bridge amenities and arranged over three floors to provide the most versatile accommodation that would suit most buyers. Driveway parking for three cars, a detached garage and an enclosed, tiered rear garden. Comprising: entrance hall, wc, living room, separate dining room, breakfast kitchen, study, utility room, lower ground floor 29ft bedroom and 26ft family room, four first floor bedrooms, an ensuite and a family bathroom. Pvc double glazing and gas central heating. Viewing highly recommended.





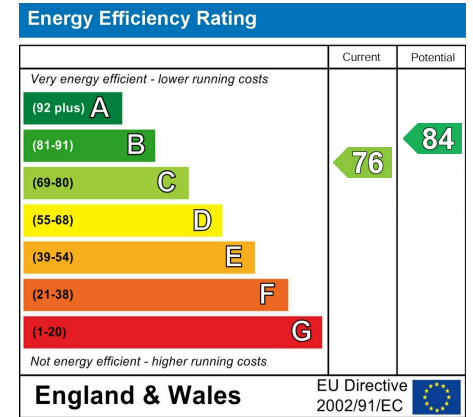
- 2008 Built Five Double Bedroom Detached
- Spacious Accommodation Over Three Floors
- Private Gardens With Wooded Aspect
- Driveway for Three Cars Plus Garage
- Popular Modern Development
- Living Room, Dining Room and 26ft Family Room
- Superbly Presented Throughtout
- Ideal For Whaley Bridge Amenities
- Pvc Double Glazing and Gas Central Heating

**Postcode** SK23 7GG

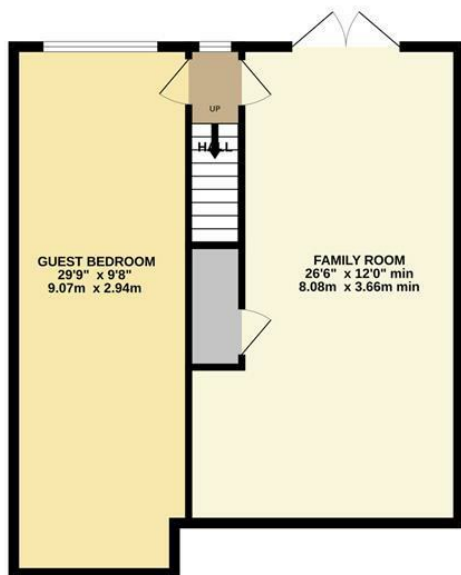
**EPC Rating** C

**Local Authority** High Peak

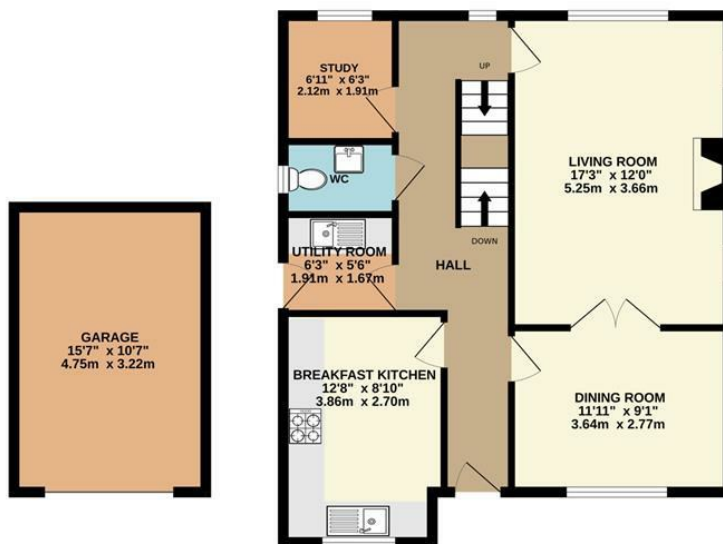
**Council Tax** F



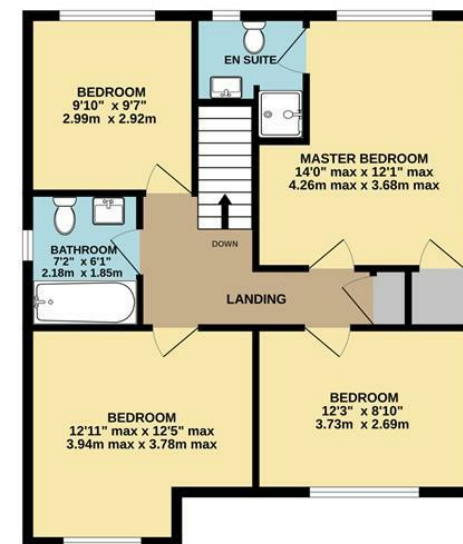
BASEMENT



GROUND FLOOR



1ST FLOOR



Whilst every attempt has been made to ensure the accuracy of the floorplan contained here, measurements of doors, windows, rooms and any other items are approximate and no responsibility is taken for any error, omission or mis-statement. This plan is for illustrative purposes only and should be used as such by any prospective purchaser. The services, systems and appliances shown have not been tested and no guarantee as to their operability or efficiency can be given.  
 Made with Metropix ©2024



These particulars are believed to be accurate but they are not guaranteed and do not form a contract. Neither Jordan Fishwick nor the vendor or lessor accept any responsibility in respect of these particulars, which are not intended to be statements or representations of fact and any intending purchaser or lessee must satisfy himself by inspection or otherwise as to the correctness of each of the statements contained in these particulars. Any floorplans on this brochure are for illustrative purposes only and are not necessarily to scale.

Offices at: Chorlton, Didsbury, Disley, Hale, Glossop, Macclesfield, Manchester Deansgate, Manchester Whitworth Street, New Mills, Sale, Wilmslow and Withington

14 Market Street, Disley, Cheshire, SK12 2AA

01663 76 78 78

disley@jordanfishwick.co.uk

www.jordanfishwick.co.uk