



Jordan fishwick

10-12 Clyde Road, M20 2WH
£1,350 Per Calendar Month



Clyde Road West Didsbury M20 2WH

£1,350 Per Calendar Month




The Property

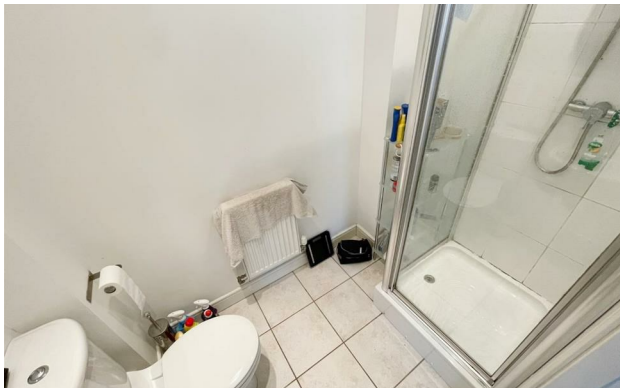
*** AVAILABLE NOVEMBER *** Jordan Fishwick are pleased to bring to the market this two double bedroom, first floor apartment in West Didsbury. Close to Metrolink and Burton Road, it is ideal for a couple or professional sharers. In brief the property comprises; entrance hall, open plan lounge/dining/kitchen with built in appliances and double doors onto Juliet balcony. There are two double bedrooms with the master benefitting from en-suite and a further three-piece family bathroom. The property also benefits from gas heating, double glazing and allocated, gated off road parking. Offered on a furnished basis. Contact Didsbury now to view - 0161 434 5290

EPC Rating - C

- Available November
- Two Double Bedrooms
- Two Bathrooms
- First Floor Apartment
- Furnished
- Ideal for Couples or Sharers
- Great Location of Didsbury
- Allocated Parking
- Council Tax Band C
- EPC Rating C



Energy Efficiency Rating		
	Current	Potential
Very energy efficient - lower running costs		
(92 plus) A		
(81-91) B	79	81
(69-80) C		
(55-68) D		
(39-54) E		
(21-38) F		
(1-20) G		
Not energy efficient - higher running costs		
England & Wales	EU Directive 2002/91/EC 	





These particulars are believed to be accurate but they are not guaranteed and do not form a contract. Neither Jordan Fishwick nor the vendor or lessor accept any responsibility in respect of these particulars, which are not intended to be statements or representations of fact and any intending purchaser or lessee must satisfy himself by inspection or otherwise as to the correctness of each of the statements contained in these particulars. Any floorplans on this brochure are for illustrative purposes only and are not necessarily to scale.

Offices at: Offices at Chorlton, Didsbury, Disley, Hale, Glossop, Macclesfield, Manchester Deansgate, Manchester Whitworth Street, New Mills, Sale, Wilmslow and Withington