

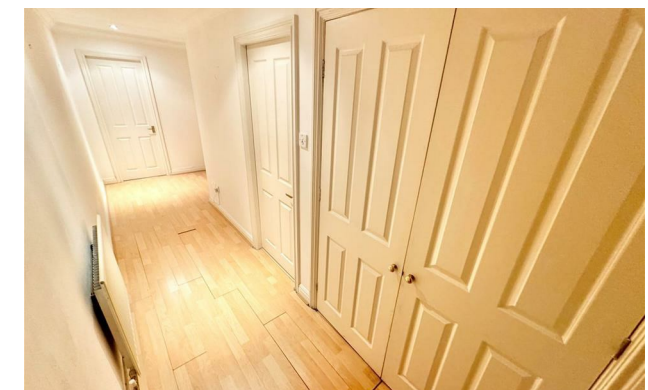


Jordan fishwick

Hazeldean Court Pinewood Road, SK9 2RP
Guide Price £187,500

Pinewood Road Wilmslow SK9 2RP

Guide Price £187,500



This well presented two bedroom top floor apartment is situated on the ever popular Summerfields development within close proximity of the A34 bypass and local shops. Wilmslow centre offers a wide range of amenities, which include a number of local shopping facilities, bars, restaurants, local leisure centre and with Wilmslow train station offering a direct service to London Euston and Manchester City centre the location caters for many different needs. Within a 10 minute drive away there are many additional amenities such as fitness centres, golf courses, Marks and Spencer and John Lewis. The property is well placed for easy access to the M56 for commuters to Manchester and the North West commercial centres and Manchester Airport is less than 20 minutes away. There are several good local state schools and a wide choice of private schools within the area with parks and beautiful countryside surrounding the whole area. The property in brief comprises: communal entrance hallway, private entrance hall, living room/dining room, kitchen, two double bedrooms and a white three piece modern bathroom. Outside the property has well tended communal gardens. There is allocated parking and visitors parking. An ideal choice for first time buyers, or "buy to let" investors. Internal viewings highly recommended.

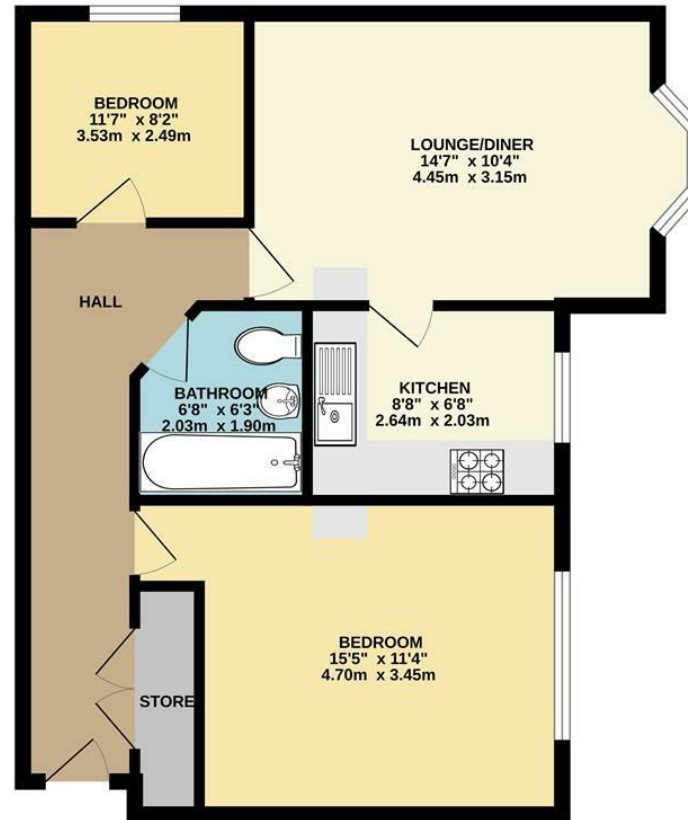


- 2 Double Bedrooms
- Well Proportioned Living Space
- Allocated Parking
- Close Proximity To Amenities
- Well Tended Communal Gardens
- Visitor Parking
- Storage Space
- No Chain



Energy Efficiency Rating		
	Current	Potential
Very energy efficient - lower running costs		
(92 plus) A		
(81-91) B		
(69-80) C		68
(55-68) D	53	
(39-54) E		
(21-38) F		
(1-20) G		
Not energy efficient - higher running costs		
England & Wales	EU Directive 2002/91/EC	

GROUND FLOOR



Measurements are approximate. Not to scale. Illustrative purposes only.
Made with Metropix ©2024



These particulars are believed to be accurate but they are not guaranteed and do not form a contract. Neither Jordan Fishwick nor the vendor or lessor accept any responsibility in respect of these particulars, which are not intended to be statements or representations of fact and any intending purchaser or lessee must satisfy himself by inspection or otherwise as to the correctness of each of the statements contained in these particulars. Any floorplans on this brochure are for illustrative purposes only and are not necessarily to scale.

Offices at: Chorlton, Didsbury, Disley, Hale, Glossop, Macclesfield, Manchester Deansgate, Manchester Whitworth Street, New Mills, Sale, Wilmslow and Withington

36-38 Alderley Road, Wilmslow, Cheshire, SK9 1JX

01625 532000

wilmslow@jordanfishwick.co.uk

www.jordanfishwick.co.uk