



*Jordan* fishwick

11 PORTMARNOCK CLOSE TYTHERINGTON MACCLESFIELD

PCM £1,350 PČM



## 11 PORTMARNOCK CLOSE TYTHERINGTON MACCLESFIELD SK10 2UX

AVAILABLE EARLY NOVEMBER FURNISHED - VIEWING ESSENTIAL TO APPRECIATE

This attractive "Cheshire brick" semi-detached property is set within the sought after and very desirable area of Tytherington.

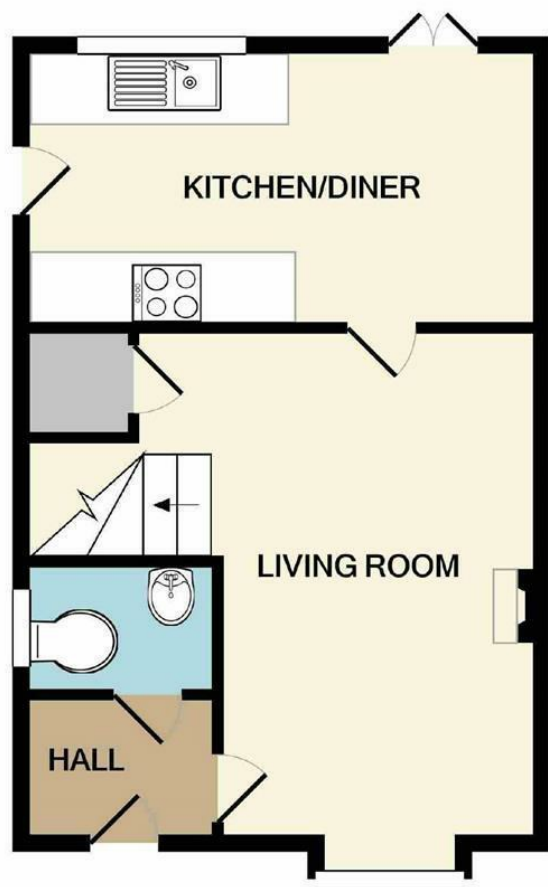
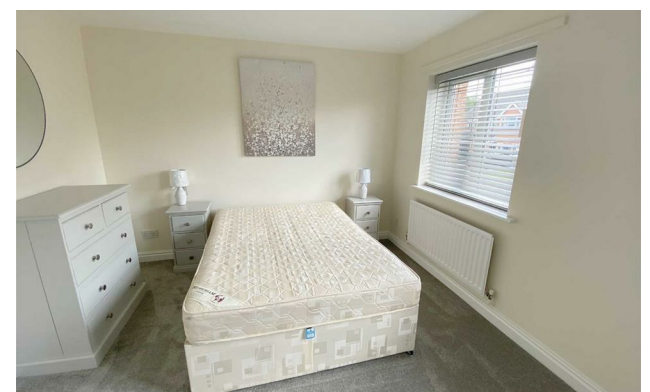
A key feature is its proximity to woodland, with a footpath leading down to the Bollin Valley which will have particular interest for those enjoying rural walks.

The accommodation is presented in immaculate order and comprises; entrance vestibule, downstairs WC, spacious living room and dining kitchen with French door opening out to the private garden.

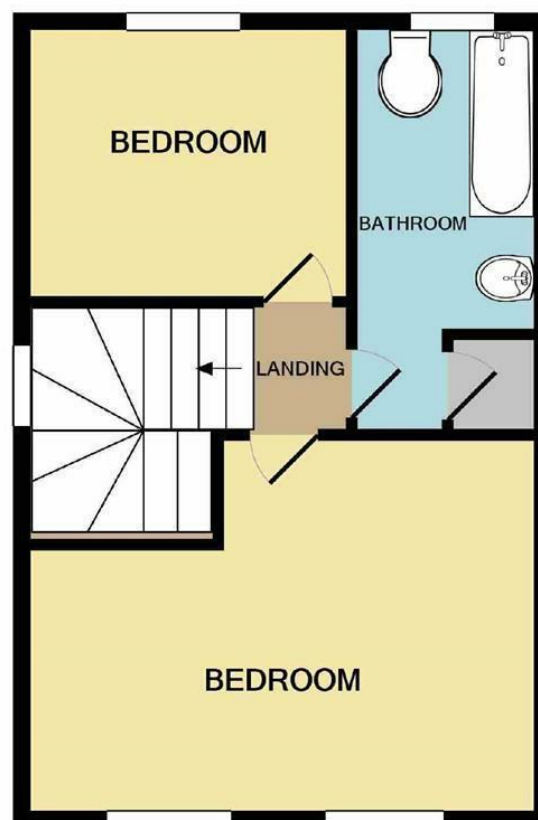
To the first floor are two bedrooms and recently fitted family bathroom.

To the rear is a lawned garden with a patio area.

Being fenced and enclosed it enjoys a certain degree of privacy. To the front is a well maintained lawned garden, with a driveway. Please note the garage will not be included.



GROUND FLOOR



1ST FLOOR

Measurements are approximate. Not to scale. Illustrative purposes only  
Made with Metropix ©2021

Energy Efficiency Rating		Current	Potential
Very energy efficient - lower running costs			
(92 plus) A			
(81-91) B			82
(69-80) C		62	
(55-68) D			
(39-54) E			
(21-38) F			
(1-20) G			
Not energy efficient - higher running costs			
England & Wales		EU Directive 2002/91/EC	