



jordan fishwick

New Mills Road Birch Vale High Peak



New Mills Road Birch Vale High Peak SK22 1BT

£695,000



The Property

Commanding magnificent views from an elevated position and standing in over a 1/3 of an acre with planning permission for a separate annex and double garage, a three double bedroom detached family home. Perfect for those wanting onsite accommodation for dependent relative, this extended home sits in a convenient position. Private grounds, gated driveway parking, large yard area ideal for multi vehicle storage and comprising: entrance hall, bay fronted living room with wood burner, sitting/dining room, fitted kitchen, utility area, rear porch, ground floor shower room, first floor master bedroom with dressing area and en-suite, two further bedrooms and a family bathroom. Pvc double glazing, gas central heating and viewing highly recommended.




- Superb Three Bedroom Detached Home
- Large Plot
- Planning Permission For Detached Annex and Double Garage
- Amazing Views
- Ample Off Road Parking
- Extended and Improved in Recent Years
- Wood Burning Stove, Pvc Double Glazing and Gas Central Heating
- Two Shower Rooms and Family Bathroom
- Elevated Position

Postcode SK22 1BT

EPC Rating

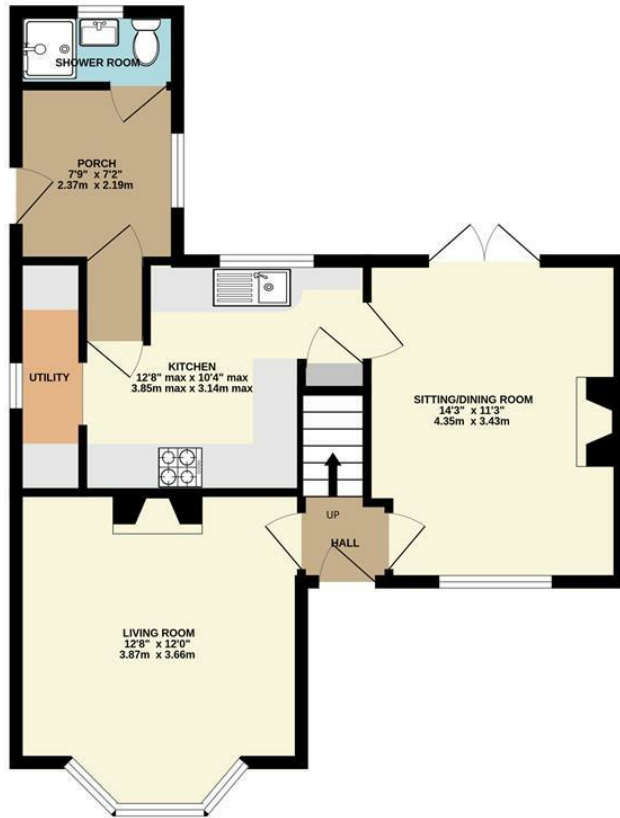
Local Authority High Peak

Council Tax D

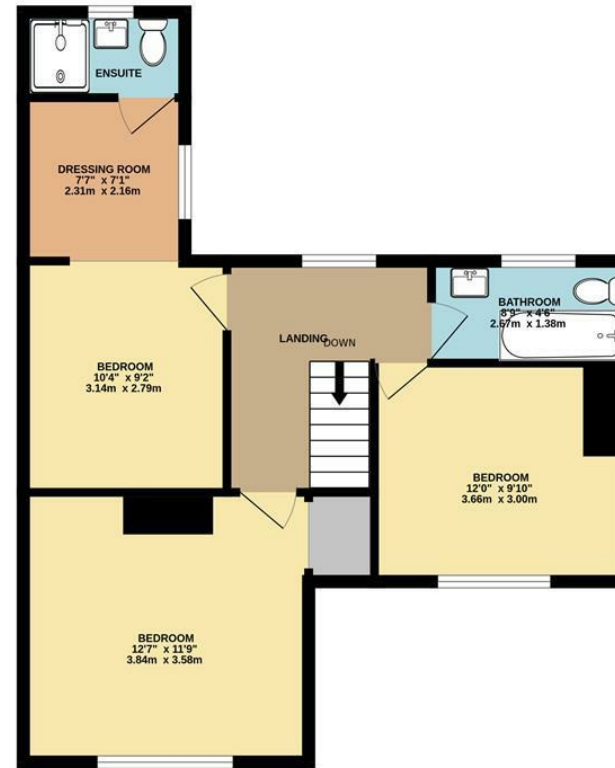
Energy Efficiency Rating		
	Current	Potential
Very energy efficient - lower running costs		
(92 plus) A		
(81-91) B		
(69-80) C		
(55-68) D		
(39-54) E		
(21-38) F		
(1-20) G		
Not energy efficient - higher running costs		
England & Wales	EU Directive 2002/91/EC 	



GROUND FLOOR



1ST FLOOR



Whilst every attempt has been made to ensure the accuracy of the floorplan contained here, measurements of doors, windows, rooms and any other items are approximate and no responsibility is taken for any error, omission or mis-statement. This plan is for illustrative purposes only and should be used as such by any prospective purchaser. The services, systems and appliances shown have not been tested and no guarantee as to their operability or efficiency can be given.
 Made with Metropix ©2024



These particulars are believed to be accurate but they are not guaranteed and do not form a contract. Neither Jordan Fishwick nor the vendor or lessor accept any responsibility in respect of these particulars, which are not intended to be statements or representations of fact and any intending purchaser or lessee must satisfy himself by inspection or otherwise as to the correctness of each of the statements contained in these particulars. Any floorplans on this brochure are for illustrative purposes only and are not necessarily to scale.

Offices at: Chorlton, Didsbury, Disley, Hale, Glossop, Macclesfield, Manchester Deansgate, Manchester Whitworth Street, New Mills, Sale, Wilmslow and Withington

2 Union Road, New Mills, High Peak, Derbyshire, SK22 3ES

01663 767878

newmills@jordanfishwick.co.uk

www.jordanfishwick.co.uk