



jordan fishwick

Heysbank Road Disley Stockport



Heysbank Road Disley Stockport SK12 2DF

£650,000



The Property

Occupying a prime corner plot within an established, popular residential area in Disley Village, a fantastic four double bedroom detached family home. Extended, balanced and versatile accommodation which is perfect for most buyers, complimented by gardens to three sides, ample driveway parking and integral garage. Well presented throughout and convenient for all local amenities. Views to Kinder Scout, pvc double glazing, gas central heating and comprising: entrance hall, 22ft living room, sitting room, shower room, open plan kitchen/dining room, study/store, utility room, first floor master bedroom with dressing area and en-suite, three further bedrooms and a bathroom with white suite. Viewing highly recommended.




- Fantastic Corner PLOT
- Large Detached Family Home
- Extended Versatile Accommodation
- Generous Private Gardens With Ample Driveway Parking
- Convenient Popular Location
- Views Towards Kinder Scout
- Four Double Bedrooms Including Master Suite
- 22FT Living Room Plus Sitting and Dining Room
- Garage, Study/Store and Utility Room
- Family Bathroom, Separate Shower Room and En-Suite Shower Room

Postcode SK12 2DF

EPC Rating

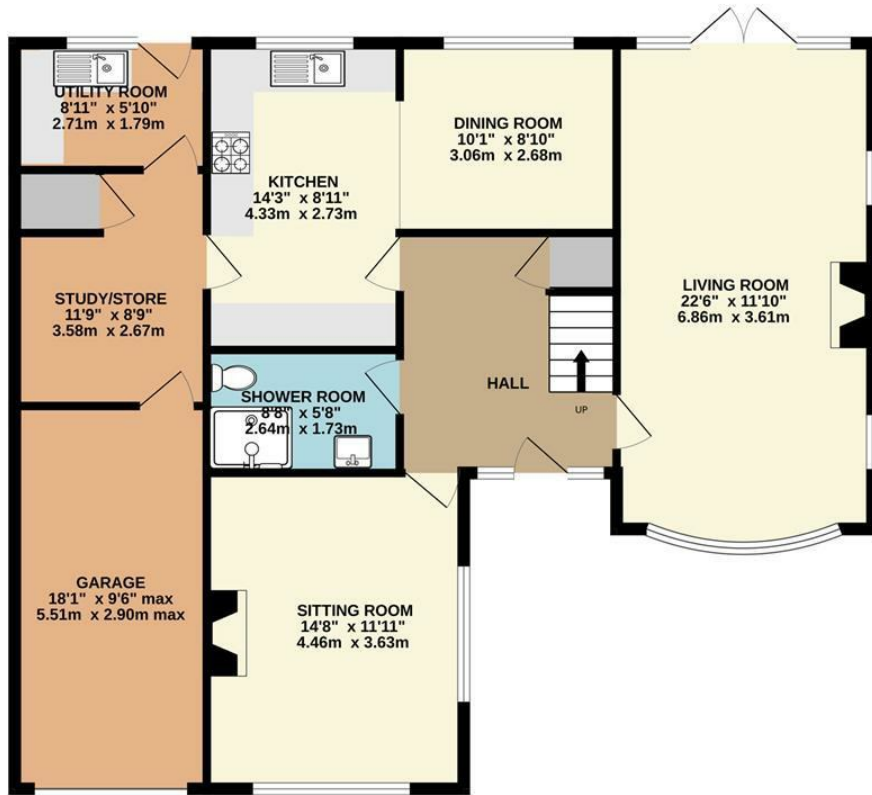
Local Authority Cheshire East

Council Tax F

Energy Efficiency Rating		Current	Potential
Very energy efficient - lower running costs			
(92 plus)	A		
(81-91)	B		
(69-80)	C		
(55-68)	D		
(39-54)	E		
(21-38)	F		
(1-20)	G		
Not energy efficient - higher running costs			
England & Wales		EU Directive 2002/91/EC 	



GROUND FLOOR



1ST FLOOR



Whilst every attempt has been made to ensure the accuracy of the floorplan contained here, measurements of doors, windows, rooms and any other items are approximate and no responsibility is taken for any error, omission or mis-statement. This plan is for illustrative purposes only and should be used as such by any prospective purchaser. The services, systems and appliances shown have not been tested and no guarantee as to their operability or efficiency can be given.
 Made with Metropix ©2024



These particulars are believed to be accurate but they are not guaranteed and do not form a contract. Neither Jordan Fishwick nor the vendor or lessor accept any responsibility in respect of these particulars, which are not intended to be statements or representations of fact and any intending purchaser or lessee must satisfy himself by inspection or otherwise as to the correctness of each of the statements contained in these particulars. Any floorplans on this brochure are for illustrative purposes only and are not necessarily to scale.

Offices at: Chorlton, Didsbury, Disley, Hale, Glossop, Macclesfield, Manchester Deansgate, Manchester Whitworth Street, New Mills, Sale, Wilmslow and Withington

14 Market Street, Disley, Cheshire, SK12 2AA

01663 76 78 78

disley@jordanfishwick.co.uk

www.jordanfishwick.co.uk