



jordan fishwick

MACCLESFIELD
Peel Street



Peel Street, Macclesfield, SK11 8BF

£1,100 PCM



The Property

AVAILABLE MID TO LATE NOVEMBER PART FURNISHED - VIEWING ESSENTIAL TO APPRECIATE

Forming part of a select and desirable development and within walking distance of South Park, excellent local schools the town centre and train station is this deceptively spacious mid mews.

Offering clean, contemporary and spacious accommodation over three floors this property is ideally suited to the professional couple or small family.

Gated entrance, entrance hall downstairs WC, modern fitted open plan kitchen with gas hob and electric oven, washing machine, fridge freezer and dishwasher. To the first floor two double bedrooms and bathroom with shower over bath. To the second floor double bedroom. Sunny private enclosed courtyard garden to rear

Contact Macclesfield 01625 502222 £1100.00pcm

COUNCIL TAX C

EPC B

Directions

SK11 8BF



- BEAUTIFULLY PRESENTED
- SPACIOUS MODERN INTERIOR
- 3 DOUBLE BEDROOMS
- PRIVATE PAVED GARDEN
- EXCELLENT LOCATION
- COUNCIL TAX C
- EPC B

Postcode - SK11 8BF

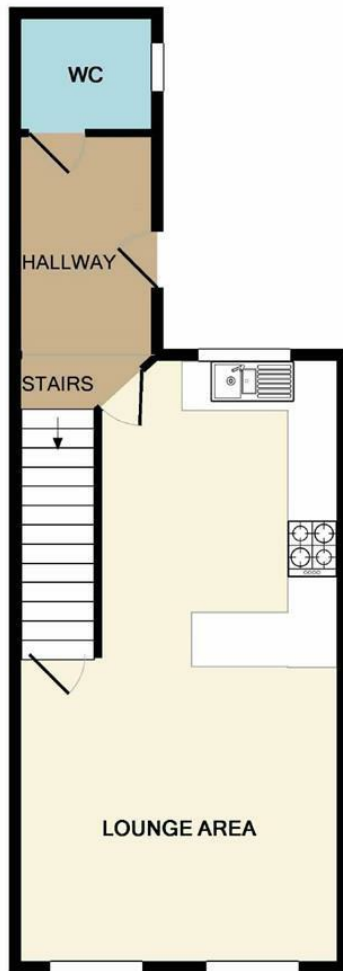
EPC Rating - B

Floor Area - sq ft

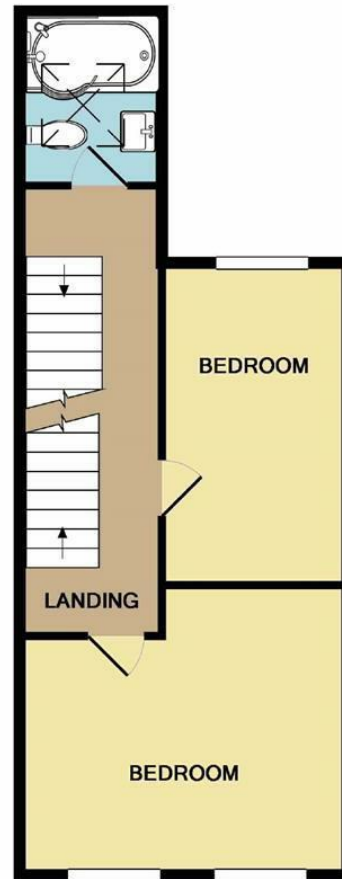
Local Authority - CHESHIRE EAST

Council Tax - C

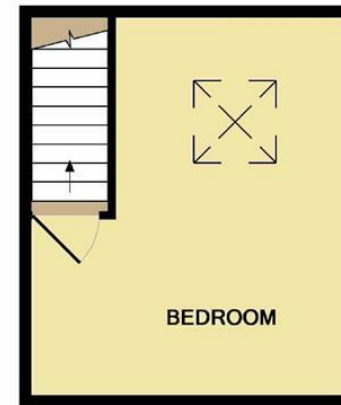




GROUND FLOOR



1ST FLOOR



2ND FLOOR

Measurements are approximate. Not to scale. Illustrative purposes only
 Made with Metropix ©2018



These particulars are believed to be accurate but they are not guaranteed and do not form a contract. Neither Jordan Fishwick nor the vendor or lessor accept any responsibility in respect of these particulars, which are not intended to be statements or representations of fact and any intending purchaser or lessee must satisfy himself by inspection or otherwise as to the correctness of each of the statements contained in these particulars. Any floorplans on this brochure are for illustrative purposes only and are not necessarily to scale.

Offices at: Chorlton, Didsbury, Disley, Hale, Glossop, Macclesfield, Manchester Deansgate, Manchester Whitworth Street, New Mills, Sale, Wilmslow and Withington

01625 502222

macce@jordanfishwick.co.uk
 www.jordanfishwick.co.uk