



Jordan fishwick

Brookside Buxworth High Peak



Brookside Buxworth High Peak SK23 7NE

£240,000



The Property

Located in the charming village of Buxworth and the delightful walks at Bugsworth Basin, a charming two double bedroom stone-built cottage of character. Arranged over three floors and boasting some fabulous views from both aspects on the top floor. Wood burning stove, exposed beams, gas central heating and pvc double glazing. Comprising: living room, fitted kitchen, first floor double bedroom, bathroom with contemporary white suite and a 16ft x 12ft dormer bedroom on the second floor. Walled frontage, paved communal garden and stone store. No chain and viewing advised.



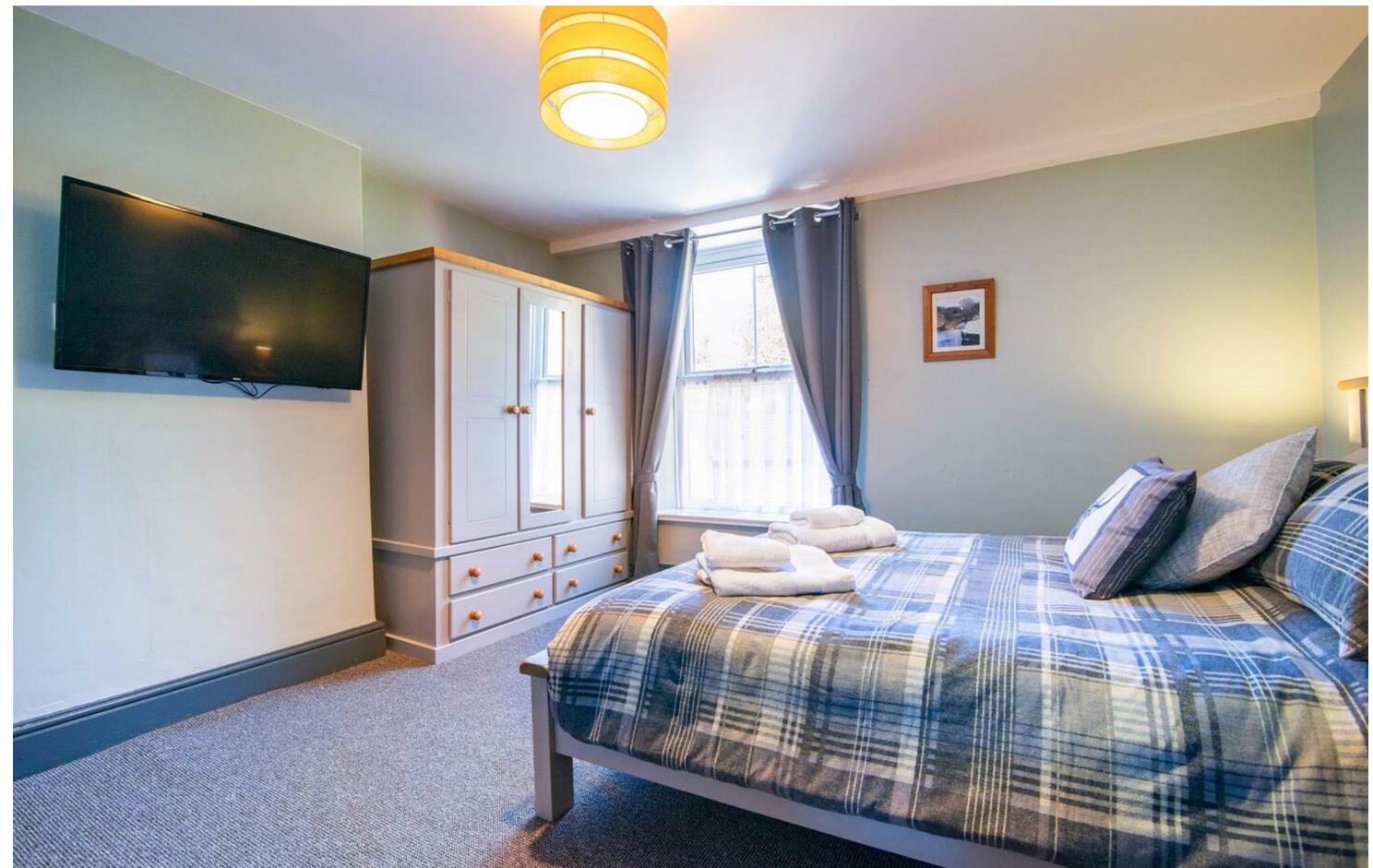
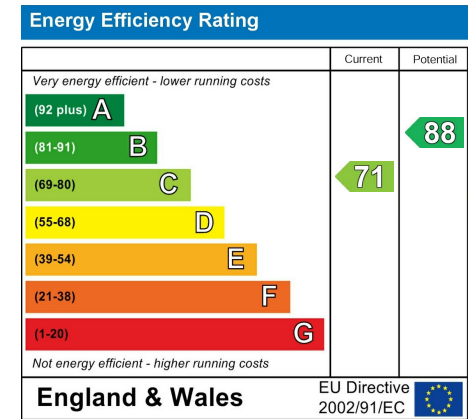
- An Ideal Holiday Let Property
- Over Three Floors
- Two Double Bedrooms
- Quaint Village Location
- Close to Pub, School and Walks
- Views From Upper Floor
- Wood Burning Stove and Beams
- No Chain
- Frontage and Communal Paved Yard

Postcode SK23 7NE

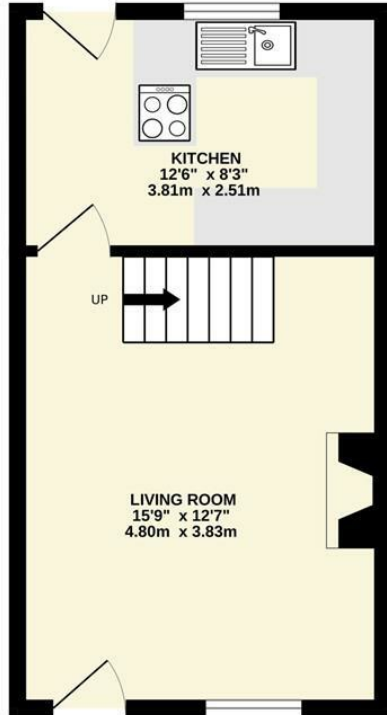
EPC Rating C

Local Authority High Peak

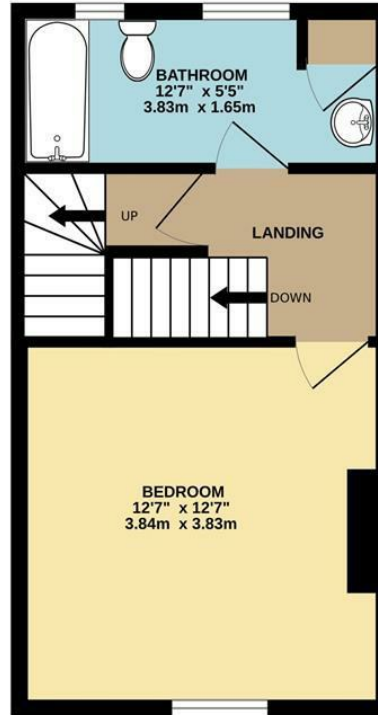
Council Tax B



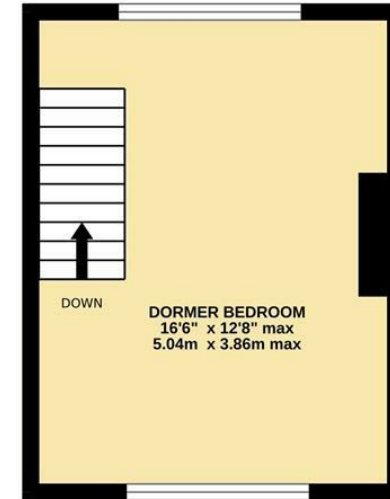
GROUND FLOOR



1ST FLOOR



2ND FLOOR



Whilst every attempt has been made to ensure the accuracy of the floorplan contained here, measurements of doors, windows, rooms and any other items are approximate and no responsibility is taken for any error, omission or mis-statement. This plan is for illustrative purposes only and should be used as such by any prospective purchaser. The services, systems and appliances shown have not been tested and no guarantee as to their operability or efficiency can be given.
Made with Metropix ©2024



These particulars are believed to be accurate but they are not guaranteed and do not form a contract. Neither Jordan Fishwick nor the vendor or lessor accept any responsibility in respect of these particulars, which are not intended to be statements or representations of fact and any intending purchaser or lessee must satisfy himself by inspection or otherwise as to the correctness of each of the statements contained in these particulars. Any floorplans on this brochure are for illustrative purposes only and are not necessarily to scale.

Offices at: Chorlton, Didsbury, Disley, Hale, Glossop, Macclesfield, Manchester Deansgate, Manchester Whitworth Street, New Mills, Sale, Wilmslow and Withington

14 Market Street, Disley, Cheshire, SK12 2AA

01663 76 78 78

disley@jordanfishwick.co.uk

www.jordanfishwick.co.uk