



*jordanfishwick*

Meadow Court  
Chorlton



## Meadow Court Chorlton M21 9HH

£1,050 Per Calendar Month



### The Property

\*\*\* AVAILABLE NOW \*\*\* Recently refurbished charming ground floor apartment set within a highly-regarded purpose-built development in the popular Chorlton Green area. This attractive property benefits from light, well-planned accommodation suitable for a professional couple. The property is a 5 minute walk away from the fashionable Beech Road which offers bars restaurants and shops. Comprises briefly: entrance hallway, lounge/dining room, kitchen, double bedroom, bathroom. There are attractive lawned communal gardens to both front and rear of the property and residents' car parking is provided. Part furnished.

\*\*\*\*\* To arrange a viewing please call 0161 393 7537 \*\*\*\*\*

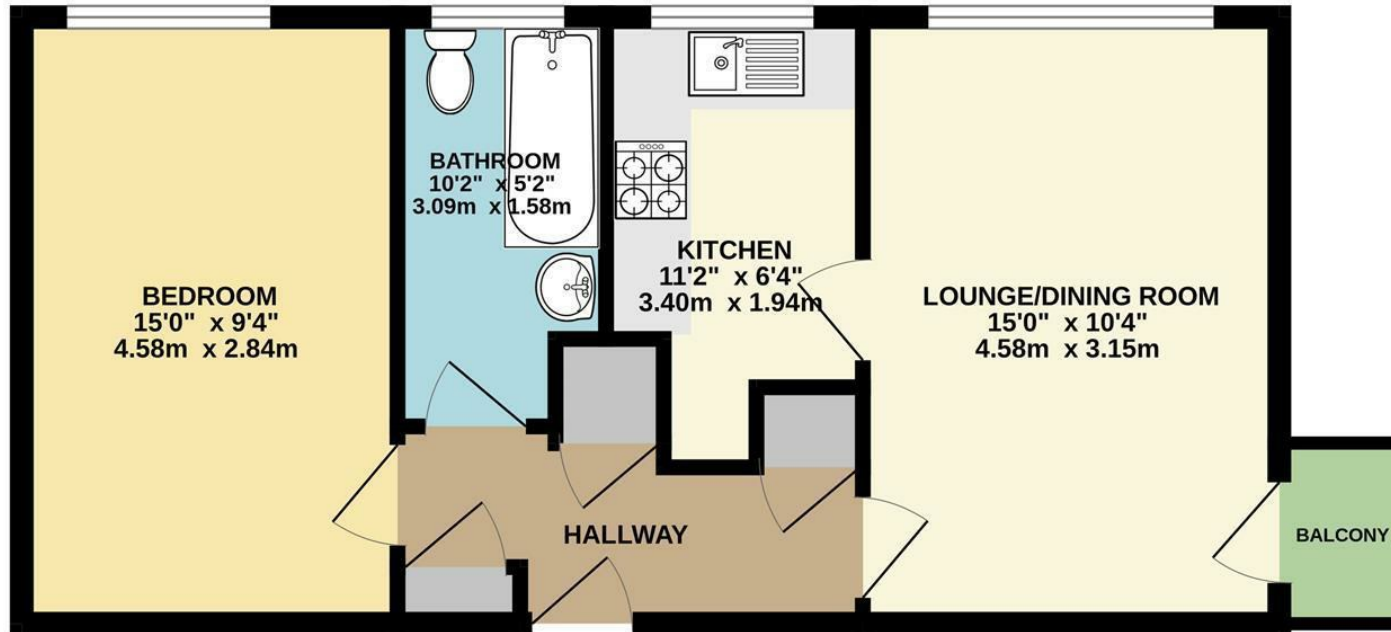
### Directions

- Council Tax band A - EPC E
- Spacious One Bedroom
- Off road parking available to all residents
- Maintained Communal Gardens
- Popular Development
- Part Furnished
- Available Now

Postcode - M21 9HH  
EPC Rating - E  
Floor Area - sq ft  
Local Authority - Manchester  
Council Tax - A



GROUND FLOOR  
470 sq.ft. (43.7 sq.m.) approx.



TOTAL FLOOR AREA : 470 sq.ft. (43.7 sq.m.) approx.

Whilst every attempt has been made to ensure the accuracy of the floorplan contained here, measurements of doors, windows, rooms and any other items are approximate and no responsibility is taken for any error, omission or mis-statement. This plan is for illustrative purposes only and should be used as such by any prospective purchaser. The services, systems and appliances shown have not been tested and no guarantee as to their operability or efficiency can be given.  
Made with Metropix ©2024



These particulars are believed to be accurate but they are not guaranteed and do not form a contract. Neither Jordan Fishwick nor the vendor or lessor accept any responsibility in respect of these particulars, which are not intended to be statements or representations of fact and any intending purchaser or lessee must satisfy himself by inspection or otherwise as to the correctness of each of the statements contained in these particulars. Any floorplans on this brochure are for illustrative purposes only and are not necessarily to scale.

Offices at: Offices at Chorlton, Didsbury, Disley, Hale, Glossop, Macclesfield, Manchester Deansgate, Manchester Whitworth Street, New Mills, Sale, Wilmslow and Withington

410-412 Barlow Moor Road, Chorlton, Manchester, M21  
8AD

[www.jordanfishwick.co.uk](http://www.jordanfishwick.co.uk)