



jordan fishwick

DIDSBURY
Ladysmith Road



Ladysmith Road, Didsbury, M20 6HL

Guide Price £325,000

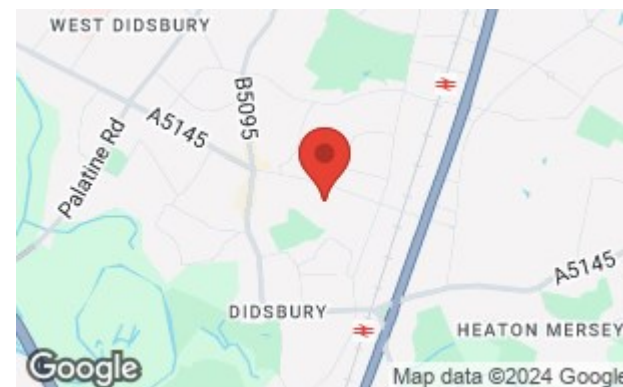


The Property

A delightful garden fronted terrace cottage enjoying a SUPERB LOCATION on a quiet CUL-DE-SAC which is within easy reach of Didsbury Village and the Metrolink, with the benefit of a FULL WIDTH ground floor extension. Presented to a high standard with both gas fired central heating and uPVC double glazed windows, the living space includes a lovely living room with feature cast iron fireplace, modern family kitchen with integrated appliances and useful laundry cupboard, extended dining room with skylights and patio doors to the rear courtyard, contemporary shower room and two bedrooms. In addition to the pleasant garden at the front, there is an enclosed walled courtyard to the rear. No onward chain.

Directions

M20 6HL



- Delightful terrace cottage
- Full width ground floor extension
- Two bedrooms
- Modern kitchen & shower room
- Lounge with feature fireplace
- Dining room with skylights
- Gas central heating
- uPVC double glazing
- Ideal cul-de-sac location
- Close to the Metrolink & Village

Postcode - M20 6HL

EPC Rating -

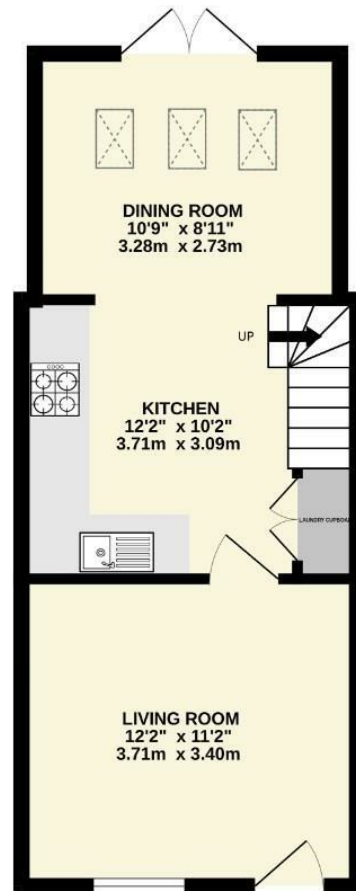
Floor Area - 624.00 sq ft

Local Authority - Manchester City Council

Council Tax - B



GROUND FLOOR
359 sq.ft. (33.3 sq.m.) approx.



1ST FLOOR
265 sq.ft. (24.6 sq.m.) approx.



TOTAL FLOOR AREA : 624 sq.ft. (57.9 sq.m.) approx.
Measurements are approximate. Not to scale. Illustrative purposes only.
Made with Metropix ©2024



These particulars are believed to be accurate but they are not guaranteed and do not form a contract. Neither Jordan Fishwick nor the vendor or lessor accept any responsibility in respect of these particulars, which are not intended to be statements or representations of fact and any intending purchaser or lessee must satisfy himself by inspection or otherwise as to the correctness of each of the statements contained in these particulars. Any floorplans on this brochure are for illustrative purposes only and are not necessarily to scale.

Offices also at: Wilmslow, Macclesfield, Hale, Sale, Chorlton, Glossop, Manchester & Salford

757-759 Wilmslow Road, Didsbury Village, Manchester

0161 445 4480

didsbury@jordanfishwick.co.uk
www.jordanfishwick.co.uk