



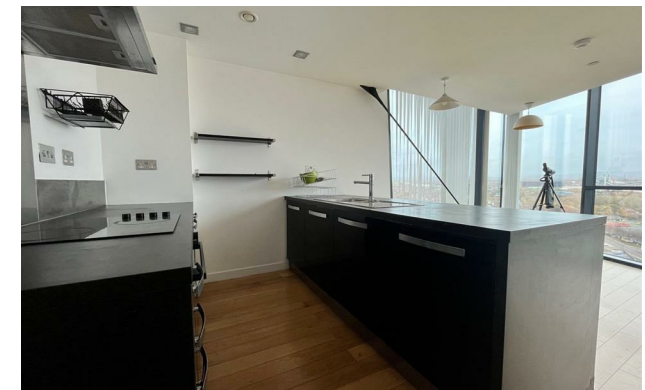
jordan fishwick

Apt 192 Islington Wharf, 153 Great Ancoats
£1,000 Per Calendar Month



Islington Wharf Ancoats M4 6DT

£1,000 Per Calendar Month



The Property


PLEASE NOTE - THERE IS STILL BUILDING MAINTENANCE OCCURING ON THE BUILDING

Available Now. A superb opportunity to live right at the top of one of Manchester's most distinctive buildings! This seventeenth floor Unfurnished apartment has breath-taking views to the south end east of the city centre and really must be viewed to be appreciated. The accommodation includes a well-proportioned living area with floor to ceiling glazing and panoramic views, stylish black gloss kitchen with a range of appliances to include oven and hob, fridge, freezer and dishwasher. Bedroom with fitted wardrobes and a decked balcony off which offers amazing views to the east. Stylish shower room. UNFURNISHED. Council Tax band B. EPC Rating C. 12 month minimum contract. Professionals Only. No Pets allowed.

VIDEO/ PHOTO OFFERS NOT ACCEPTED - PLEASE CALL TO BOOK A VIEWING

- Available Now
- Seventeenth Floor
- One Bedroom - Furnished
- Amazing Views
- Balcony
- Council Tax Band B
- EPC Rating C
- Close to City Centre
- No Parking



Energy Efficiency Rating		
	Current	Potential
Very energy efficient - lower running costs		
(92 plus) A		
(81-91) B		
(69-80) C	77	79
(55-68) D		
(39-54) E		
(21-38) F		
(1-20) G		
Not energy efficient - higher running costs		
England & Wales	EU Directive 2002/91/EC 	





These particulars are believed to be accurate but they are not guaranteed and do not form a contract. Neither Jordan Fishwick nor the vendor or lessor accept any responsibility in respect of these particulars, which are not intended to be statements or representations of fact and any intending purchaser or lessee must satisfy himself by inspection or otherwise as to the correctness of each of the statements contained in these particulars. Any floorplans on this brochure are for illustrative purposes only and are not necessarily to scale.

Offices at: Offices at Chorlton, Didsbury, Disley, Hale, Glossop, Macclesfield, Manchester Deansgate, Manchester Whitworth Street, New Mills, Sale, Wilmslow and Withington