



*jordan fishwick*

48 Buxton Road Whaley Bridge High Peak



# 48 Buxton Road Whaley Bridge High Peak SK23 7JE

£295,000



## The Property

**\*\*\* NO ONWARD CHAIN\*\*\*** A deceptively spacious 3-bedroom mid-terrace property forming part of the attractive Trinity Mews, providing living accommodation over three floors. A beautifully maintained property which provides great living space, a large dining/kitchen with modern fitted appliances and ample space for a dining table. The living room is of good size with good proportions with plenty of space for furnishings and warmed by a feature gas fireplace. To the first floor there are two good sized double bedrooms which are both serviced by the family bathroom. To the second floor is the impressive master suite. A large and bright space with two 'Velux' windows providing plenty of natural light both benefiting from motorised blinds. The ensuite is tastefully decorated with shower cubicle, wash hand basin & w.c. Externally, to the front of property is a paved seating area and a designated parking space. Other notable mentions are gas central heating system and PVC double glazed windows throughout. Viewings of this property are not to be missed.






- Three Double Bedrooms
- Master with Ensuite
- Designated Parking Space
- Freehold
- Close to Local Amenities & Transport Links
- PVC Double Glazed Windows

**Postcode** SK23 7JE

**EPC Rating**

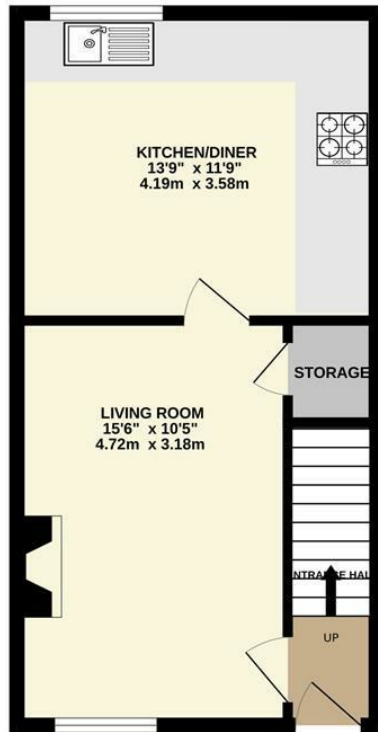
**Local Authority** High Peak

**Council Tax** C

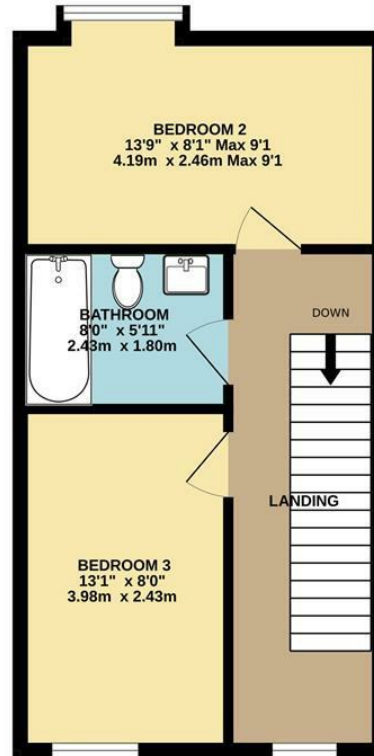
Energy Efficiency Rating		Current	Potential
Very energy efficient - lower running costs			
(92 plus)	A		
(81-91)	B		
(69-80)	C		
(55-68)	D		
(39-54)	E		
(21-38)	F		
(1-20)	G		
Not energy efficient - higher running costs			
<b>England &amp; Wales</b>		EU Directive 2002/91/EC 	



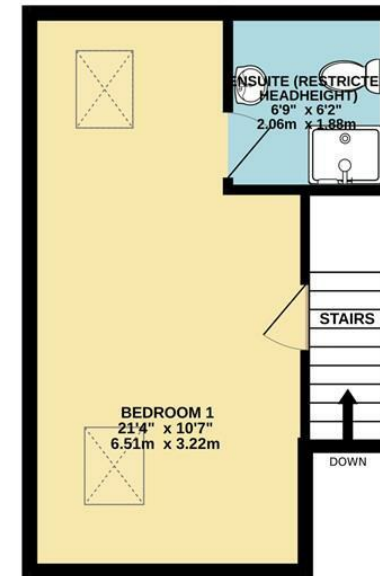
GROUND FLOOR



1ST FLOOR



2ND FLOOR



Whilst every attempt has been made to ensure the accuracy of the floorplan contained here, measurements of doors, windows, rooms and any other items are approximate and no responsibility is taken for any error, omission or mis-statement. This plan is for illustrative purposes only and should be used as such by any prospective purchaser. The services, systems and appliances shown have not been tested and no guarantee as to their operability or efficiency can be given.  
Made with Metropix ©2024



These particulars are believed to be accurate but they are not guaranteed and do not form a contract. Neither Jordan Fishwick nor the vendor or lessor accept any responsibility in respect of these particulars, which are not intended to be statements or representations of fact and any intending purchaser or lessee must satisfy himself by inspection or otherwise as to the correctness of each of the statements contained in these particulars. Any floorplans on this brochure are for illustrative purposes only and are not necessarily to scale.

Offices at: Chorlton, Didsbury, Disley, Hale, Glossop, Macclesfield, Manchester Deansgate, Manchester Whitworth Street, New Mills, Sale, Wilmslow and Withington

14 Market Street, Disley, Cheshire, SK12 2AA

01663 76 78 78

disley@jordanfishwick.co.uk

www.jordanfishwick.co.uk