



Jordan fishwick

1 River Street, SK9 4AB
Guide Price £1,200 PCM

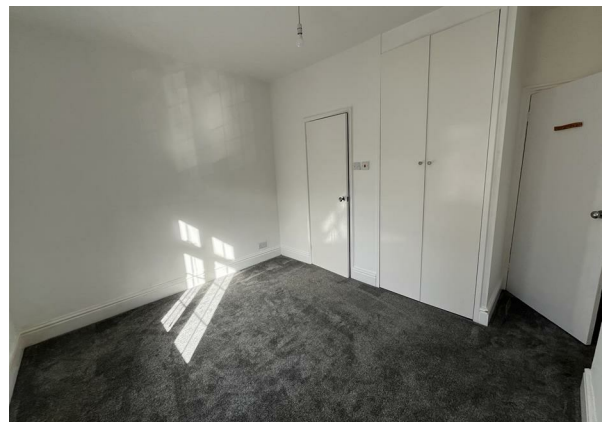
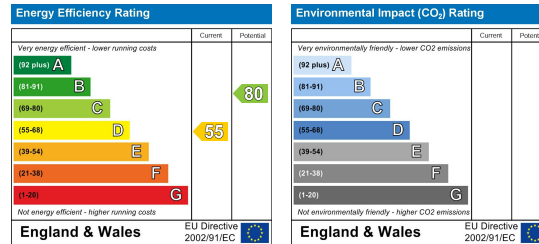


AVAILABLE NOW PART FURNISHED - VIEWING RECOMMENDED

This quaint and attractive end terrace is located on this hugely popular road in central Wilmslow. Being only a stones throw from the town centre and within easy walking distance of the train station this well presented cottage is sure to be a popular choice Lounge with feature fireplace, modern dining kitchen with gas hob and electric oven, utility room with fridge freezer and washing machine, downstairs WC.

To the first floor two double bedrooms both with en suite bathrooms and fitted wardrobes.

Small courtyard garden to the rear. **ON STREET PARKING**
 Contact Wilmslow 01625 536300 £1200.00pcm



These particulars are believed to be accurate but they are not guaranteed and do not form a contract. Neither Jordan Fishwick nor the vendor or lessor accept any responsibility in respect of these particulars, which are not intended to be statements or representations of fact and any intending purchaser or lessee must satisfy himself by inspection or otherwise as to the correctness of each of the statements contained in these particulars. Any floorplans on this brochure are for illustrative purposes only and are not necessarily to scale.

Offices at: Chorlton, Didsbury, Disley, Hale, Glossop, Macclesfield, Manchester Deansgate, Manchester Whitworth Street, New Mills, Sale, Wilmslow and Withington

01625 536300

wilmslow@jordanfishwick.co.uk

www.jordanfishwick.co.uk