



*jordan fishwick*

**NORTHENDEN**  
Haughton Drive



# Haughton Drive, Northenden, M22 4EQ

Guide Price £375,000



## The Property

A superb, BAY FRONTED, THREE BEDROOM semi detached family home presented to a HIGH STANDARD THROUGHOUT, with a delightful LANDSCAPED REAR GARDEN, modern kitchen, four piece LUXURY BATHROOM and a convenient location close to THE RIVER MERSEY, NORTHENDEN VILLAGE & NORTHENDEN COMMUNITY SCHOOL. The stylish living space benefits from gas central heating and uPVC double glazed windows, with bespoke Plantation shutters to the front and in outline comprising :- Entrance porch, entrance hall with generous storage cupboard, lounge with Limestone fireplace, open plan dining room and comprehensively fitted with with integrated appliances, three bedrooms, with fitted furniture to the main, and generous tiled bathroom with four piece suite and chrome fittings. A full width driveway to the front provides ample parking, whilst to the rear is a delightful garden with decked seating areas, slate flowerbeds, lawned section, boundary fencing and a really useful timber garden shed with lighting.

## Directions

M22 4EQ



- Superb family home
- High level of presentation
- Three bedrooms
- Luxury four-piece bathroom
- Comprehensively fitted modern kitchen
- Two separate receptions
- Gas central heating
- uPVC double glazing
- Impressive landscaped garden
- Convenient location

Postcode - M22 4EQ

EPC Rating - D

Floor Area - 1027.00 sq ft

Local Authority - Manchester City Council

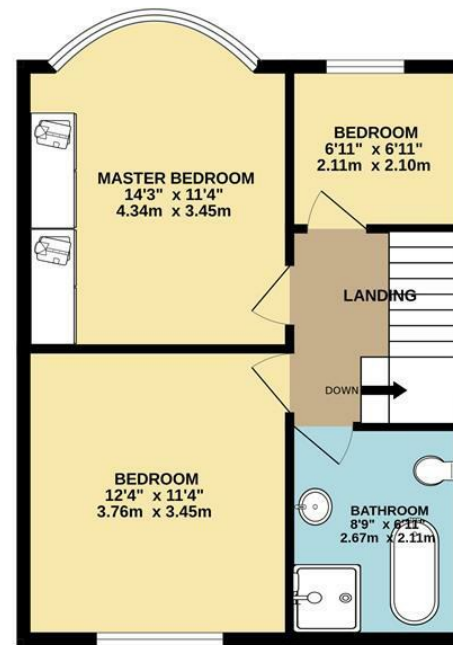
Council Tax - C



GROUND FLOOR  
561 sq.ft. (52.1 sq.m.) approx.



1ST FLOOR  
466 sq.ft. (43.3 sq.m.) approx.



TOTAL FLOOR AREA: 1027 sq.ft. (95.4 sq.m.) approx.  
Measurements are approximate. Not to scale. Illustrative purposes only.  
Made with Metropix ©2024



These particulars are believed to be accurate but they are not guaranteed and do not form a contract. Neither Jordan Fishwick nor the vendor or lessor accept any responsibility in respect of these particulars, which are not intended to be statements or representations of fact and any intending purchaser or lessee must satisfy himself by inspection or otherwise as to the correctness of each of the statements contained in these particulars. Any floorplans on this brochure are for illustrative purposes only and are not necessarily to scale.

Offices also at: Wilmslow, Macclesfield, Hale, Sale, Chorlton, Glossop, Manchester & Salford

757-759 Wilmslow Road, Didsbury Village, Manchester

0161 445 4480

didsbury@jordanfishwick.co.uk  
www.jordanfishwick.co.uk