



jordan fishwick

4 Swalecliff Avenue, Manchester, M23 9DJ

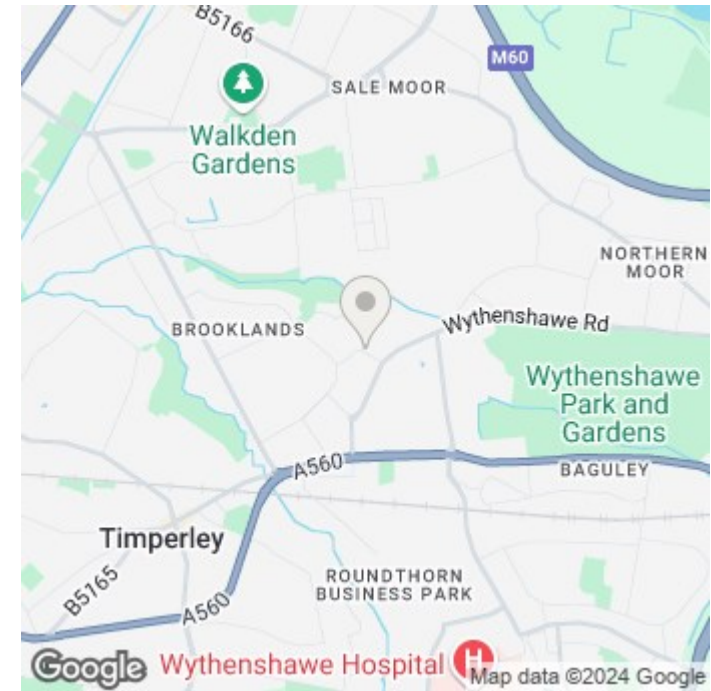
Three bedroom end terrace property situated in a popular residential area within close proximity to various amenities and good schools. Well presented throughout, the property comprises: entrance hall, kitchen, lounge with doors to the garden, utility/dining room, three well proportioned bedrooms and family bathroom. Externally, the property boasts block paved driveway to the front and enclosed lawned garden to the rear.
Council Tax Band A. EPC Rating D. Freehold.

£279,950

Viewing arrangements

Viewing strictly by appointment through the agent

95-97 School Road, Sale, Cheshire, M33 7XA 0161 962 2828

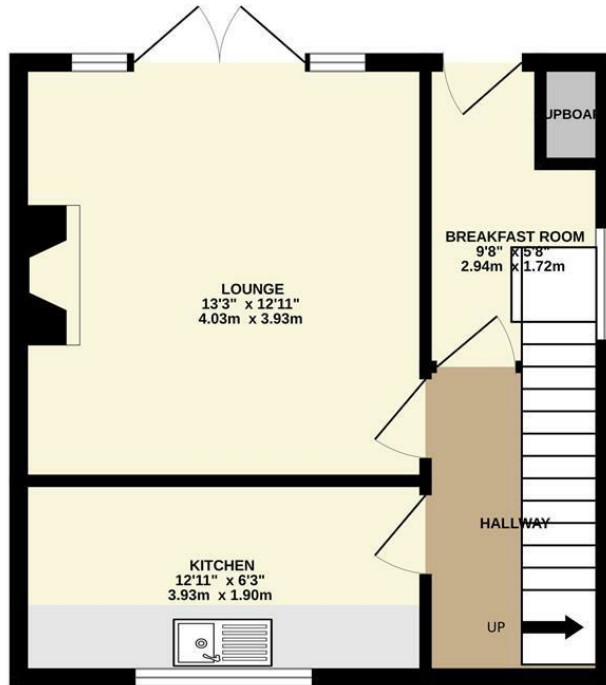


Energy Efficiency Rating		
	Current	Potential
<i>Very energy efficient - lower running costs</i>		
(92 plus) A		
(81-91) B		
(69-80) C		
(55-68) D		
(39-54) E		
(21-38) F		
(1-20) G		
<i>Not energy efficient - higher running costs</i>		
	60	76
England & Wales	EU Directive 2002/91/EC	

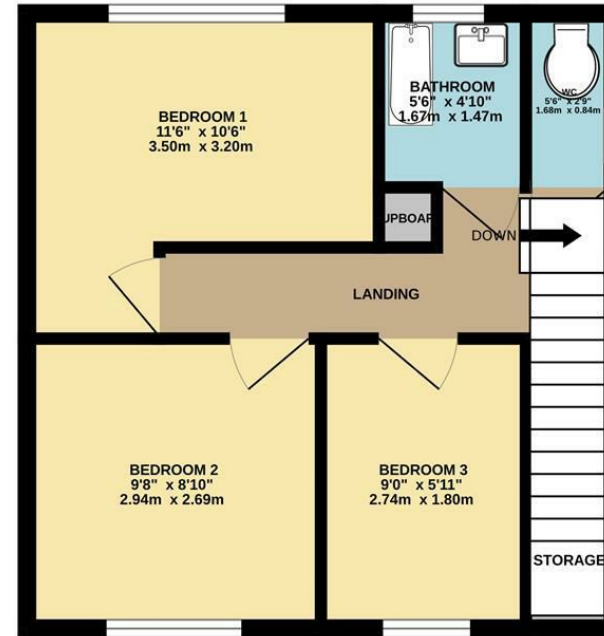
Environmental Impact (CO ₂) Rating		
	Current	Potential
<i>Very environmentally friendly - lower CO₂ emissions</i>		
(92 plus) A		
(81-91) B		
(69-80) C		
(55-68) D		
(39-54) E		
(21-38) F		
(1-20) G		
<i>Not environmentally friendly - higher CO₂ emissions</i>		
England & Wales	EU Directive 2002/91/EC	



GROUND FLOOR
355 sq.ft. (32.9 sq.m.) approx.



1ST FLOOR
362 sq.ft. (33.6 sq.m.) approx.



TOTAL FLOOR AREA : 717 sq.ft. (66.6 sq.m.) approx.
Measurements are approximate. Not to scale. Illustrative purposes only
Made with Metropix ©2024



These particulars are believed to be accurate but they are not guaranteed and do not form a contract. Neither Jordan Fishwick nor the vendor or lessor accept any responsibility in respect of these particulars, which are not intended to be statements or representations of fact and any intending purchaser or lessee must satisfy himself by inspection or otherwise as to the correctness of each of the statements contained in these particulars. Any floorplans on this brochure are for illustrative purposes only and are not necessarily to scale.

Offices at: Chorlton, Didsbury, Disley, Hale, Glossop, Macclesfield, Manchester Deansgate, Manchester Whitworth Street, New Mills, Sale, Wilmslow and Withington

95-97 School Road, Sale, Cheshire, M33 7XA

0161 962 2828

sale@jordanfishwick.co.uk
www.jordanfishwick.co.uk

