



Palatine Road, Didsbury, Manchester, M20 2WF

£1,450 Per Calendar Month



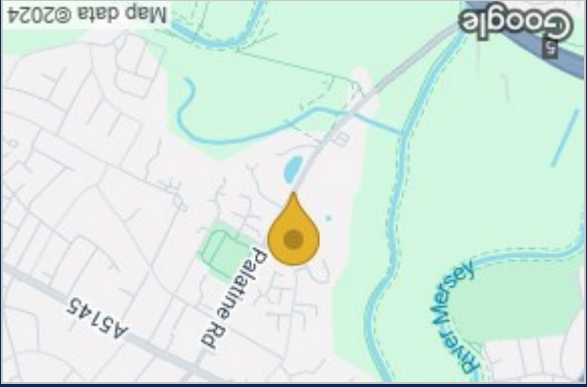
View our Virtual Tour Here - <https://youtu.be/5eC4X56ENZU>

*** AVAILABLE OCTOBER *** We are pleased to bring to the market this well-presented ground floor apartment with balconies off the living room & master bedroom, overlooking the rear of the block. Located in a great area of Didsbury off Palatine Road, it's perfect for couples or professional sharers. In brief the property comprises; entrance hall with utility cupboard, spacious open plan kitchen/lounge with fitted appliances, master bedroom with modern en-suite bathroom. Second double bedroom and family bathroom. Further benefits include under floor heating & one underground parking space with secure gated entrance. Offered on a furnished basis. To View Apply Didsbury on 0161 434 5290

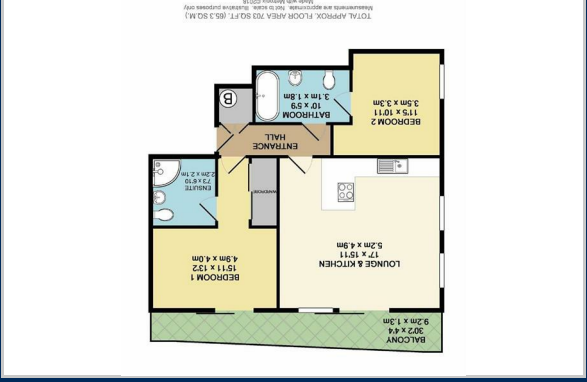
EPC Rating -



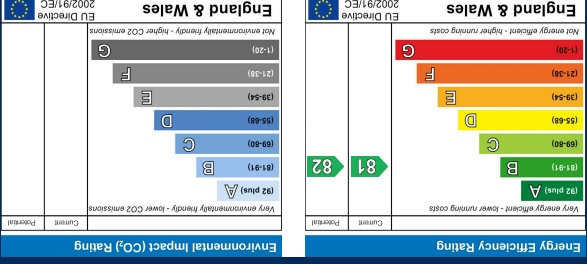
Area Map



Floor Plan



Energy Efficiency Graph



These particulars, whilst believed to be accurate are set out as a general outline only for guidance and do not constitute any part of an offer or contract. Intending purchasers should not rely on them as statements of representation of fact, but must satisfy themselves by inspection or otherwise as to their accuracy. No person in this firm's employment has the authority to make or give any representation or warranty in respect of the property.