



**Flat 6 Bowland Court, Sale, M33 3DE**

£1,250 Per Calendar Month

[www.jordanfishwick.co.uk](http://www.jordanfishwick.co.uk)





# *Jordan fishwick*

- Available Now
- Two Bedrooms
- Parking
- EPC Rating C
- Close To Local Tram Station
- Fully Refurbished
- New Kitchen And Bathroom
- Garage
- Trafford Council Tax B
- Close To Town Centre

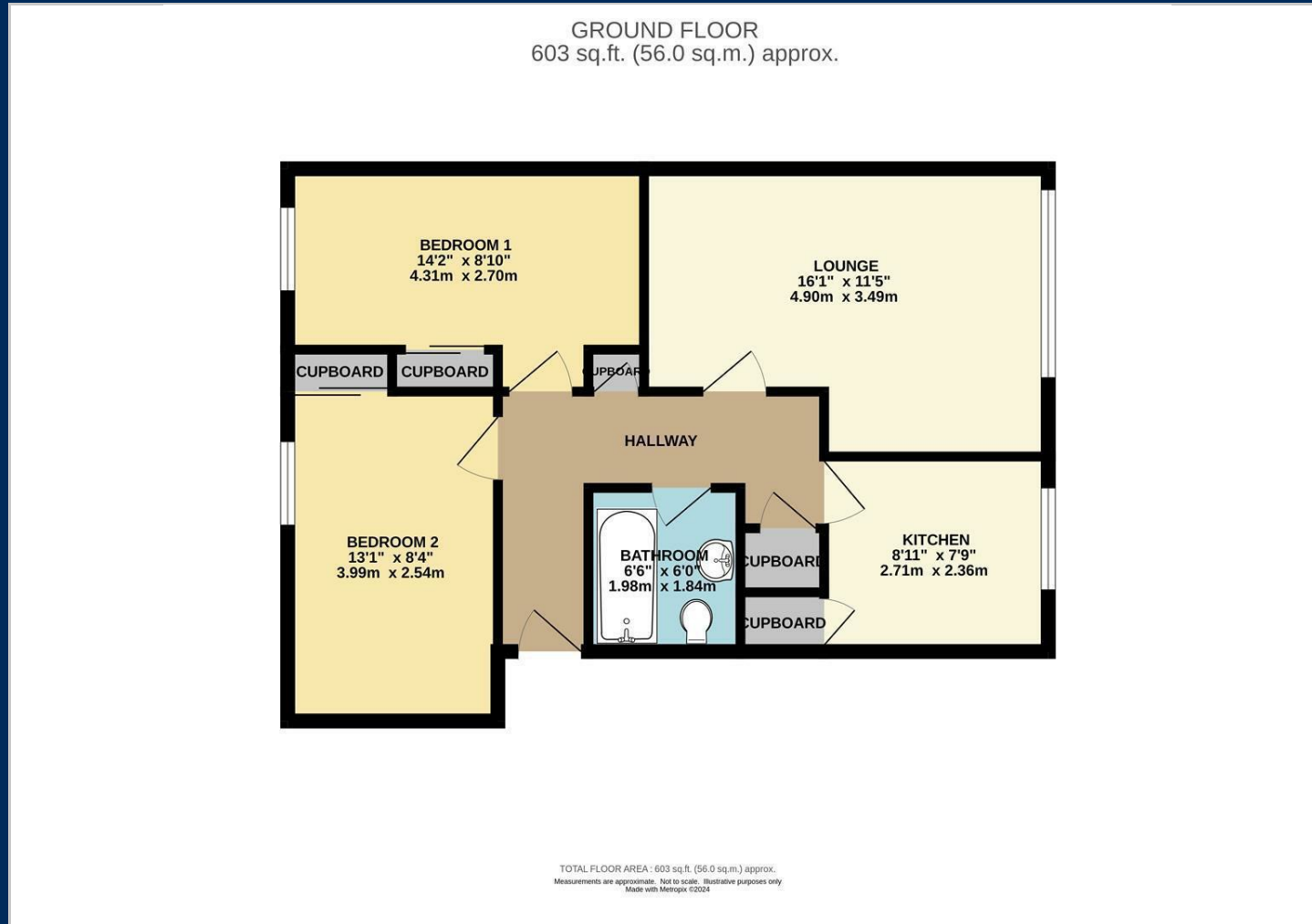
## AVAILABLE NOW

A first floor, fully refurbished two bedroom apartment situated on the ever popular Wardle Road, close to the local tram station and town centre. Brand new kitchen and bathroom. Electric heating. Parking and garage. Epc rating C. Trafford Council Tax B

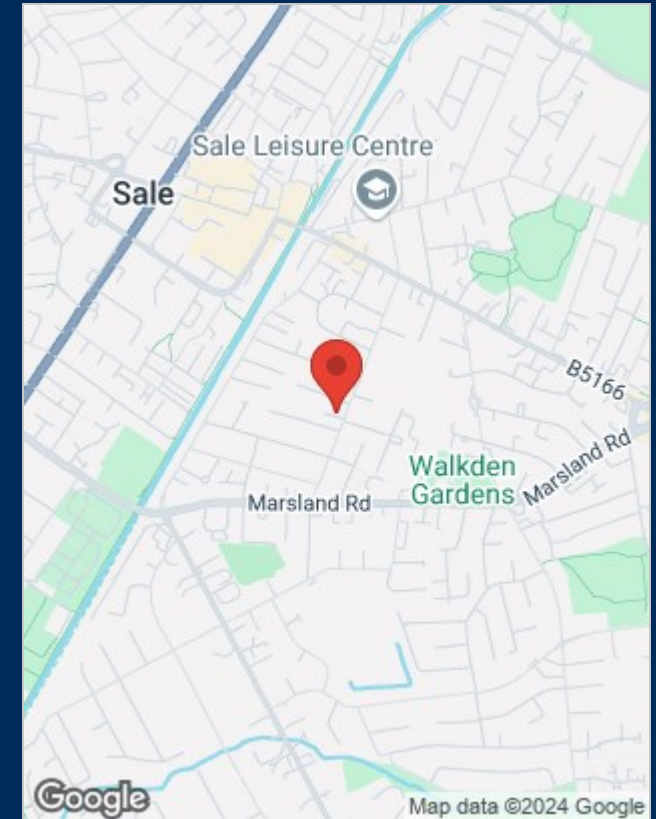




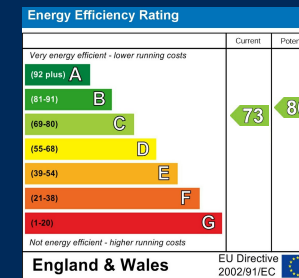
## Floor Plans



## Location Map



## Energy Performance Graph



## Viewing

Please contact our Sale Lettings Office on if you wish to arrange a viewing appointment for this property or require further information.

The particulars are set out as a general outline only for the guidance of intended purchasers or lessees, and do not constitute, any part of a contract. Nothing in these particulars shall be deemed to be a statement that the property is in good structural condition or otherwise nor that any of the services, appliances, equipment or facilities are in good working order. Purchasers should satisfy themselves of this prior to purchasing.