



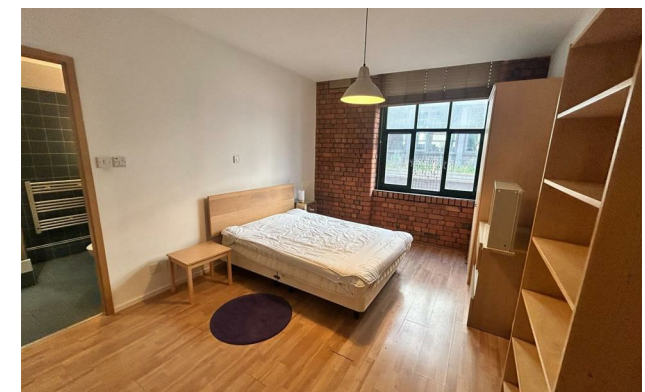
jordan fishwick

Apt 11 The Vaults, Tariff Street, M1 2FF
£1,475 Per Calendar Month



The Vaults Piccadilly M1 2FF

£1,475 Per Calendar Month




The Property

Available Now! A stunning second floor two bedroom apartment in this intimate conversion on Tariff Street in the Northern Quarter. This immaculately presented property is a true gem and early viewing is advised. Entrance hallway, huge open plan living/dining area with exposed brickwork and large windows allowing maximum natural light, contemporary kitchen with a range of appliances, master bedroom with en-suite, second double bedroom and a stylish master bath. Furnished. No pets. Tax Band E. EPC Rating C.

VIDEO/ PHOTO OFFERS NOT ACCEPTED - PLEASE CALL TO BOOK A VIEWING

- Available Now
- Two Double Bedrooms
- Second Floor Apartment
- Tax Band E
- EPC Rating C
- Northern Quarter Location
- Close to Piccadilly Train Station
- No Parking
- No Pets



Energy Efficiency Rating		
	Current	Potential
Very energy efficient - lower running costs		
(92 plus) A		
(81-91) B		83
(69-80) C	74	
(55-68) D		
(39-54) E		
(21-38) F		
(1-20) G		
Not energy efficient - higher running costs		
England & Wales	EU Directive 2002/91/EC 	





These particulars are believed to be accurate but they are not guaranteed and do not form a contract. Neither Jordan Fishwick nor the vendor or lessor accept any responsibility in respect of these particulars, which are not intended to be statements or representations of fact and any intending purchaser or lessee must satisfy himself by inspection or otherwise as to the correctness of each of the statements contained in these particulars. Any floorplans on this brochure are for illustrative purposes only and are not necessarily to scale.

Offices at: Offices at Chorlton, Didsbury, Disley, Hale, Glossop, Macclesfield, Manchester Deansgate, Manchester Whitworth Street, New Mills, Sale, Wilmslow and Withington