



*jordan fishwick*

ALTRINCHAM  
Burnside





# Burnside, Altrincham, WA15 0SG

£725,000



## The Property

NO ONWARD CHAIN. Jordan Fishwick are proud to present this detached family home, which offers spacious accommodation in excess of 1,750 square feet and situated in a quiet cul-de-sac location within a mile of Hale Barns Square.

The accommodation in brief comprises entrance hall, open plan lounge diner, kitchen/family room, conservatory and DWC. To the first floor, the principle bedroom has an ensuite bathroom and there are three further double bedrooms, and a family bathroom.

Externally, the property boasts a private rear garden, large driveway with parking for multiple vehicles, and a detached garage.

## Directions

WA15 0SG





- Modern Detached House
- Four Bedrooms
- Two Reception Rooms
- Ample Parking
- EPC -
- Council Tax Band -
- Conservatory
- Private Corner Plot

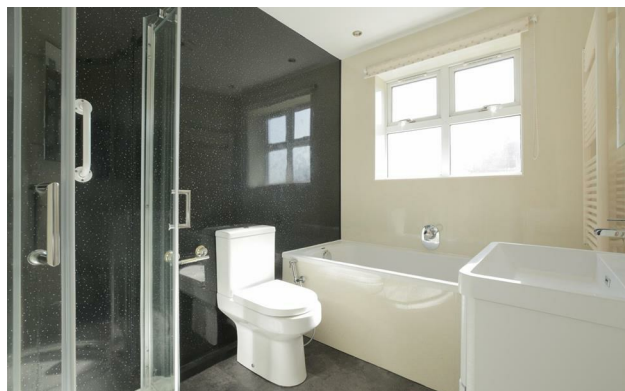
Postcode - WA15 0SG

EPC Rating - D

Floor Area - 1758.00 sq ft

Local Authority - Trafford

Council Tax - G



GROUND FLOOR  
1074 sq.ft. (99.8 sq.m.) approx.



1ST FLOOR  
684 sq.ft. (63.5 sq.m.) approx.



TOTAL FLOOR AREA : 1758 sq.ft. (163.3 sq.m.) approx.

Whilst every attempt has been made to ensure the accuracy of the floorplan contained here, measurements of doors, windows, rooms and any other items are approximate and no responsibility is taken for any error, omission or mis-statement. This plan is for illustrative purposes only and should be used as such by any prospective purchaser. The services, systems and appliances shown have not been tested and no guarantee as to their operability or efficiency can be given.  
Made with Metropix ©2024



These particulars are believed to be accurate but they are not guaranteed and do not form a contract. Neither Jordan Fishwick nor the vendor or lessor accept any responsibility in respect of these particulars, which are not intended to be statements or representations of fact and any intending purchaser or lessee must satisfy himself by inspection or otherwise as to the correctness of each of the statements contained in these particulars. Any floorplans on this brochure are for illustrative purposes only and are not necessarily to scale.

Offices at: Chorlton, Didsbury, Disley, Hale, Glossop, Macclesfield, Manchester Deansgate, Manchester Whitworth Street, New Mills, Sale, Wilmslow and Withington

0161 929 3001

enquiries@jfxclusive.co.uk  
www.jordanfishwick.co.uk