



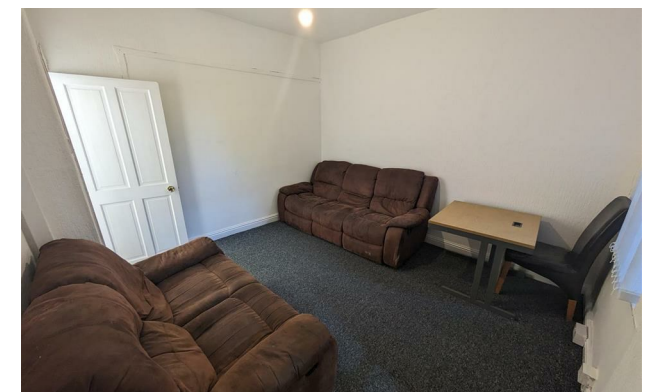
Jordan fishwick

37 Haydn Avenue, Fallowfield, M14 4DJ
£600 Per Calendar Month



Haydn Avenue Manchester M14 4DJ

£600 Per Calendar Month



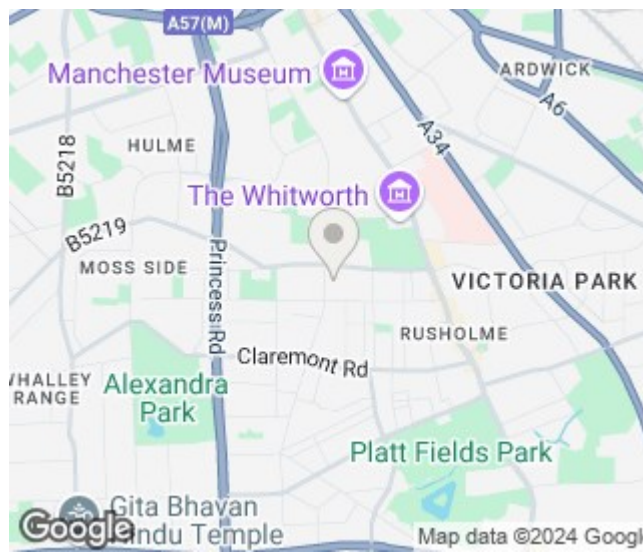
The Property


View our Virtual Tour here - <https://www.youtube.com/watch?v=xKMZMzSiWkg>

***** AVAILABLE NOW *** ROOM ONLY BILLS INCLUDED ***** A four bedroom mid-terrace property ideally located within walking distance of Wilmslow Road, close to all local amenities and transport links to the universities and city centre. In brief, the property comprises: entrance hall, first double bedroom, lounge and fitted kitchen. To the first floor there are two double bedrooms, a single bedroom and a bathroom. ROOM ONLY with all bills included. Fully furnished. On street permit parking via the council. Viewing highly recommended! To view apply Withington 0161 438 2411.

EPC Rating D / Council Tax Band A

- Available Now
- Double Room Only
- House Share
- Suitable for Students and Professionals
- Fully Furnished
- Great Location
- All Bills Included
- On Street Parking
- Council Tax Band A
- EPC Rating D



Energy Efficiency Rating		
	Current	Potential
Very energy efficient - lower running costs		
(92 plus) A		
(81-91) B		85
(69-80) C	67	
(55-68) D		
(39-54) E		
(21-38) F		
(1-20) G		
Not energy efficient - higher running costs		
England & Wales	EU Directive 2002/91/EC 	





These particulars are believed to be accurate but they are not guaranteed and do not form a contract. Neither Jordan Fishwick nor the vendor or lessor accept any responsibility in respect of these particulars, which are not intended to be statements or representations of fact and any intending purchaser or lessee must satisfy himself by inspection or otherwise as to the correctness of each of the statements contained in these particulars. Any floorplans on this brochure are for illustrative purposes only and are not necessarily to scale.

Offices at: Offices at Chorlton, Didsbury, Disley, Hale, Glossop, Macclesfield, Manchester Deansgate, Manchester Whitworth Street, New Mills, Sale, Wilmslow and Withington