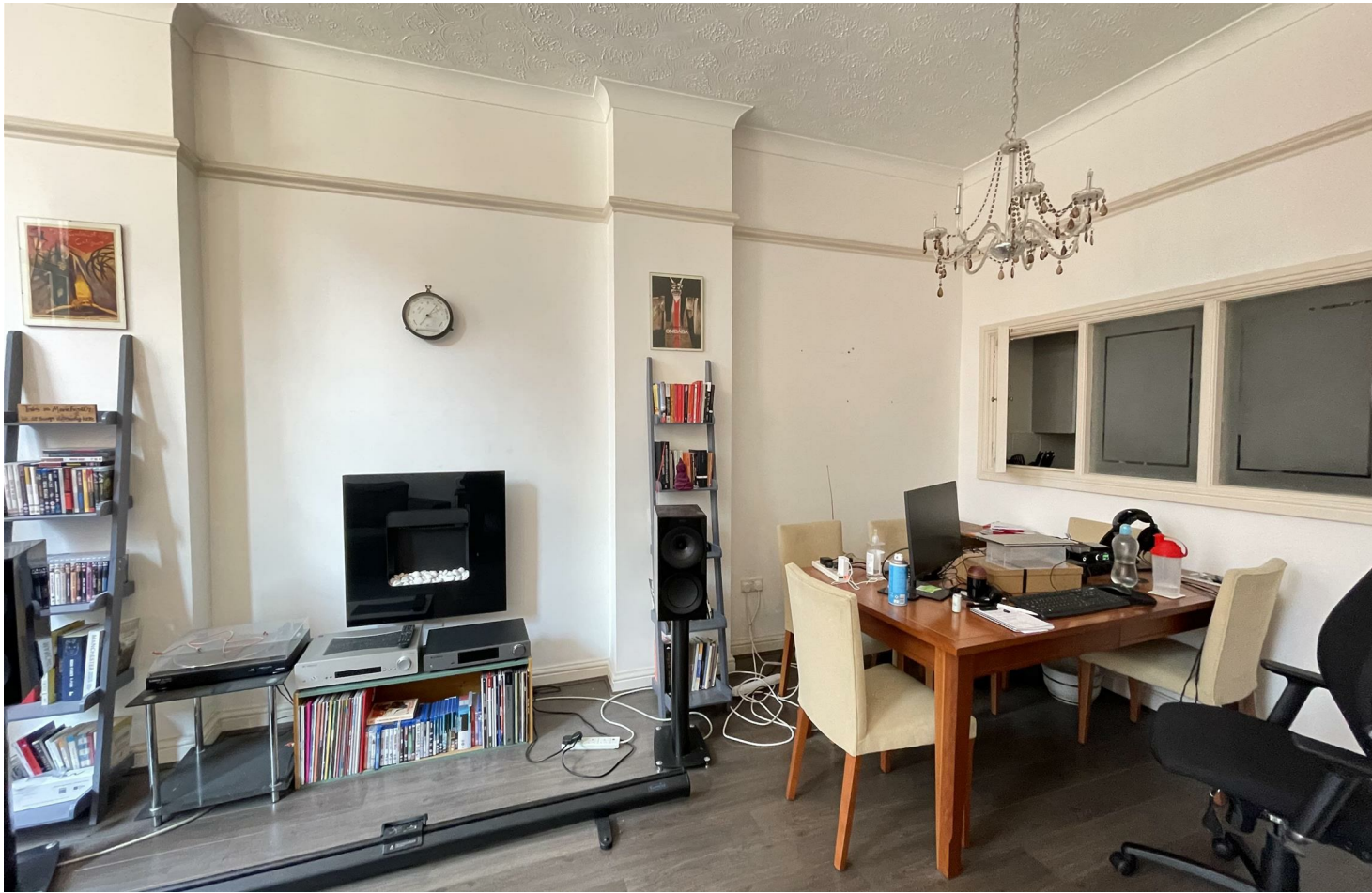




Jordan fishwick

Apt 2 Chepstow House, 16-20 Chepstow
£1,150 Per Calendar Month



The Property

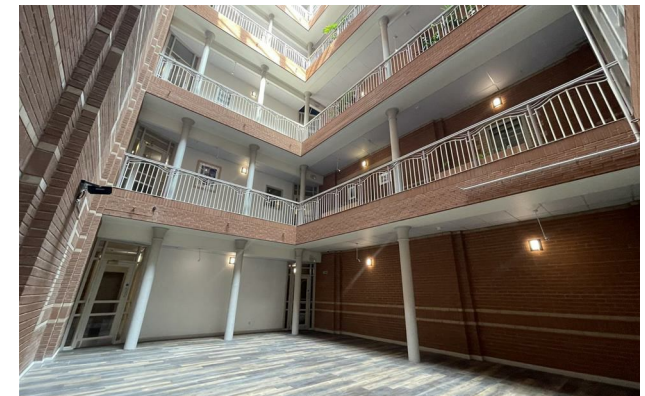
PLEASE NOTE - THIS PROPERTY IS FOR A 6 MONTH TENANCY ONLY

Available Mid December. Jordan Fishwick are pleased to offer this lower ground floor one bedroom apartment in the popular Grade 2 listed Chepstow House development. The apartment is larger than the average one bedroom, and boasts high ceilings throughout. It briefly comprises of: entrance hallway, lounge/diner, separate kitchen, larger than average bedroom with plenty of space for wardrobes, and a well appointed bathroom suite (with underfloor heating). There is also a cupboard in the hallway housing a newly fitted water tank. Off road parking included. Tax Band C. EPC Rating D.

VIDEO/ PHOTO OFFERS NOT ACCEPTED - PLEASE CALL TO BOOK A VIEWING

Chepstow House Manchester M1 5JF

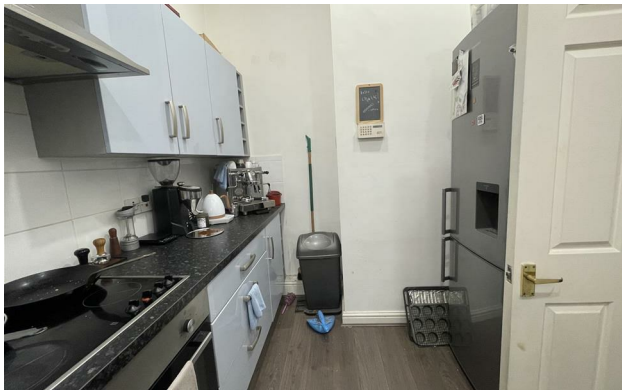
£1,150 Per Calendar Month



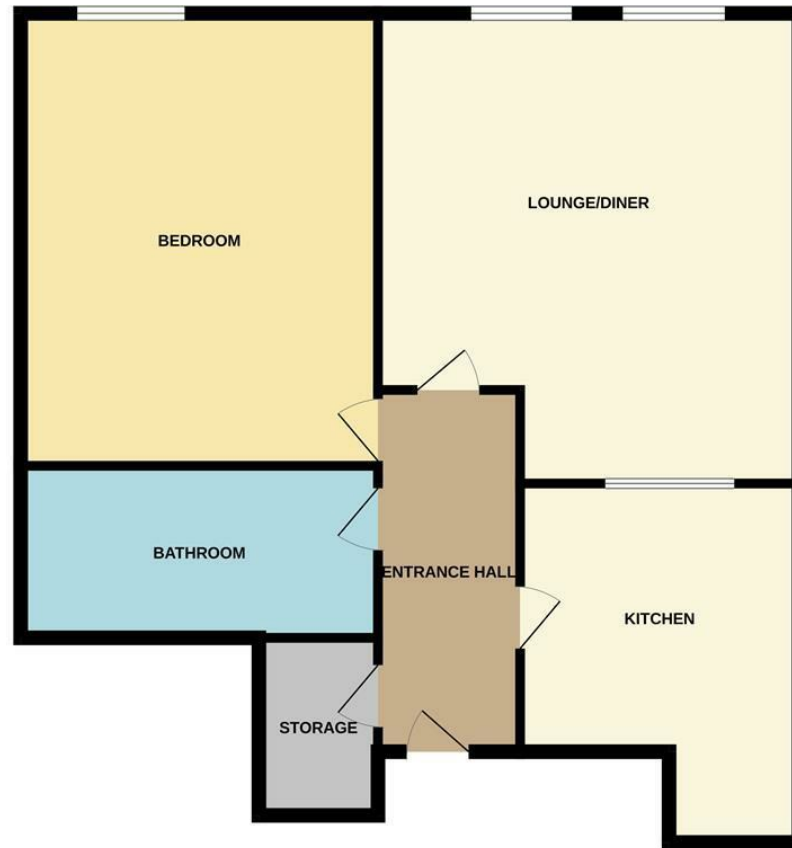
- Available Mid December
- 6 Months' ONLY
- Lower Ground Floor - One Bedroom Apartment
- High Ceilings Throughout
- Larger Than Average
- Lifts to All Floors
- Grade 2 Listed
- Tax Band C



Energy Efficiency Rating		
	Current	Potential
Very energy efficient - lower running costs		
(92 plus) A		
(81-91) B		80
(69-80) C	68	
(55-68) D		
(39-54) E		
(21-38) F		
(1-20) G		
Not energy efficient - higher running costs		
England & Wales	EU Directive 2002/91/EC	



GROUND FLOOR



Measurements are approximate. Not to scale. Illustrative purposes only.
Made with Metropix ©2023



These particulars are believed to be accurate but they are not guaranteed and do not form a contract. Neither Jordan Fishwick nor the vendor or lessor accept any responsibility in respect of these particulars, which are not intended to be statements or representations of fact and any intending purchaser or lessee must satisfy himself by inspection or otherwise as to the correctness of each of the statements contained in these particulars. Any floorplans on this brochure are for illustrative purposes only and are not necessarily to scale.

Offices at: Offices at Chorlton, Didsbury, Disley, Hale, Glossop, Macclesfield, Manchester Deansgate, Manchester Whitworth Street, New Mills, Sale, Wilmslow and Withington