



*jordan fishwick*

The Lock, 41 Whitworth St, M1 5BE  
£1,300 Per Calendar Month



## The Lock Manchester M1 5BE

£1,300 Per Calendar Month




### The Property

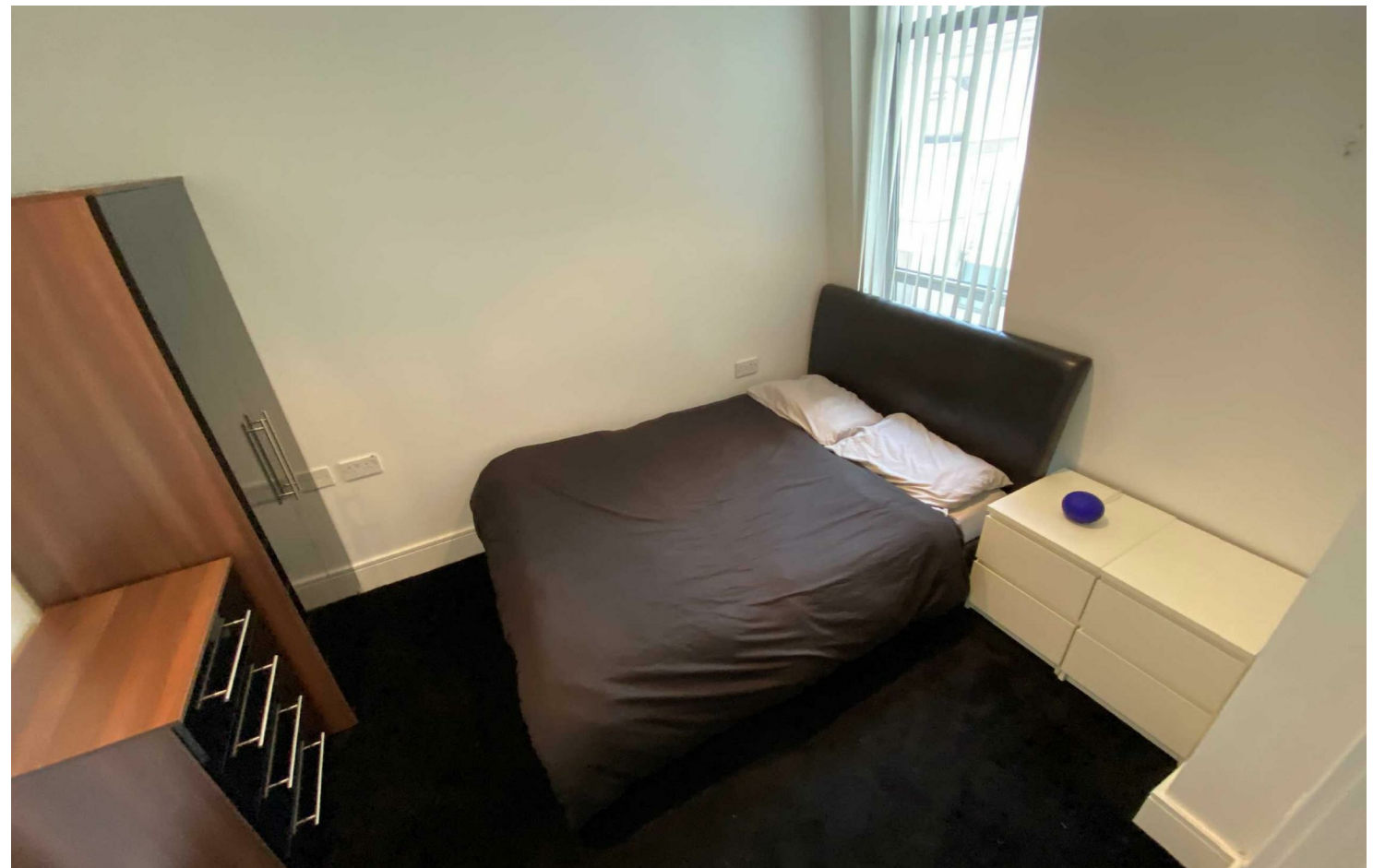
For a Video Tour please click this link... [https://youtu.be/qDGgrI90-\\_E](https://youtu.be/qDGgrI90-_E)

Available Mid August. This two bedroom 8th floor apartment is located close to Oxford Rd Station and the Palace Theatre, along with the Universities. The building is extremely popular and offers high quality design, with the benefit of a concierge on site. The property comprises of entrance hall with storage, Large open plan living area, kitchen with fridge/freezer, dishwasher, oven, hob and extractor hood & a decked balcony. Master bedroom with private balcony & en-suite shower, second double bedroom and attractive white bathroom suite with shower attachment. Furnished. Parking included. Council tax band E. EPC Rating C - 12 month Tenancies ONLY!

- Available Mid August
- City Centre - Close to Universities
- Two Double Bedrooms
- Furnished
- Secure Parking
- Council Tax band E



| Energy Efficiency Rating                    |   |           |
|---|---|-----------|
|   | Current   | Potential |
| Very energy efficient - lower running costs |   |           |
| (92 plus) <b>A</b>                          |   |           |
| (81-91) <b>B</b>                            | <b>80</b>   | <b>81</b> |
| (69-80) <b>C</b>                            |   |           |
| (55-68) <b>D</b>                            |   |           |
| (39-54) <b>E</b>                            |   |           |
| (21-38) <b>F</b>                            |   |           |
| (1-20) <b>G</b>                             |   |           |
| Not energy efficient - higher running costs |   |           |
| <b>England &amp; Wales</b>                  | EU Directive 2002/91/EC  |           |





These particulars are believed to be accurate but they are not guaranteed and do not form a contract. Neither Jordan Fishwick nor the vendor or lessor accept any responsibility in respect of these particulars, which are not intended to be statements or representations of fact and any intending purchaser or lessee must satisfy himself by inspection or otherwise as to the correctness of each of the statements contained in these particulars. Any floorplans on this brochure are for illustrative purposes only and are not necessarily to scale.

Offices at: Offices at Chorlton, Didsbury, Disley, Hale, Glossop, Macclesfield, Manchester Deansgate, Manchester Whitworth Street, New Mills, Sale, Wilmslow and Withington