



Jordan fishwick

Crossland Road
Chorlton



Crossland Road Chorlton M21 9DU

£1,500 Per Calendar Month



The Property

**** AVAILABLE NOW **** We are super excited to offer this beautiful Two Double Bedroom end Terrace, located in the ever popular Chorlton Green & Beech Road area with its many cafes, bars, boutique shops, highly regarded primary schools and Chorlton Ee's. This gorgeous property has been finished to a high standard throughout and will make a perfect home for a professional couple, small family or two professional sharers. The property comprises of: Two good sized Reception rooms, Kitchen, Modern bathroom with shower over bath, Two Double bedrooms. There are white wooden shutters on all windows. To the rear of the property there is a courtyard garden with a locked gated alleyway for residents only. This property is one not to be missed!

***** To arrange a viewing please call 0161 393 7539 *****

Directions

- Council Tax Band B - EPC D
- Stunning 2 Double Bedroom Terrace
- Unfurnished
- Chorlton Green location
- Finished to a high standard throughout
- Secure good sized court yard garden
- Available Now

Postcode - M21 9DU

EPC Rating - D

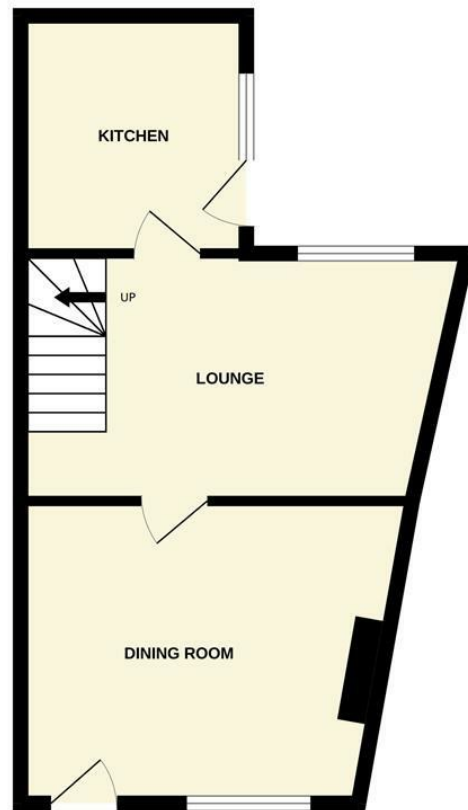
Floor Area - sq ft

Local Authority - Manchester

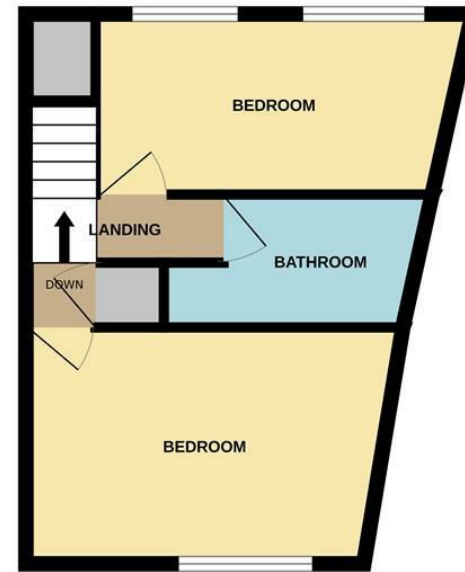
Council Tax - B



GROUND FLOOR



1ST FLOOR



Whilst every attempt has been made to ensure the accuracy of the floorplan contained here, measurements of doors, windows, rooms and any other items are approximate and no responsibility is taken for any error, omission or mis-statement. This plan is for illustrative purposes only and should be used as such by any prospective purchaser. The services, systems and appliances shown have not been tested and no guarantee as to their operability or efficiency can be given.
Made with Metropix ©2024



These particulars are believed to be accurate but they are not guaranteed and do not form a contract. Neither Jordan Fishwick nor the vendor or lessor accept any responsibility in respect of these particulars, which are not intended to be statements or representations of fact and any intending purchaser or lessee must satisfy himself by inspection or otherwise as to the correctness of each of the statements contained in these particulars. Any floorplans on this brochure are for illustrative purposes only and are not necessarily to scale.

Offices at: Offices at Chorlton, Didsbury, Disley, Hale, Glossop, Macclesfield, Manchester Deansgate, Manchester Whitworth Street, New Mills, Sale, Wilmslow and Withington

410-412 Barlow Moor Road, Chorlton, Manchester, M21 8AD

www.jordanfishwick.co.uk