



*Jordan fishwick*

Vicars Road  
Chorlton





**Vicars Road Chorlton M21  
9JB**

**£1,595 Per Calendar Month**



### **The Property**

\*\*\*AVAILABLE SEPTEMBER \*\*\*An attractive and well presented three bedroom period property offered in excellent order and located on a highly popular road in Chorlton Green. Ideal for a couple or young family, the accommodation comprises: covered porch, entrance hall, lounge, separate dining room, fitted dining kitchen, utility with plumbing for washing machine. To the first floor there are three excellent bedrooms and a bathroom with white suite and over bath shower. Gas central heating and partial double glazing are installed. An enclosed courtyard to the rear of the property completes the specification. Unfurnished.

\*\*\*\*\* To arrange a viewing please call 0161 393 7539 \*\*\*\*\*

### **Directions**

- Council Tax band C - EPC E
- A spacious garden fronted end terraced period property
- Well placed for the Meadows & Beech Road
- Highly regarded Road
- Two reception rooms & three good sized bedrooms
- Unfurnished
- Available late September

Postcode - M21 9JB

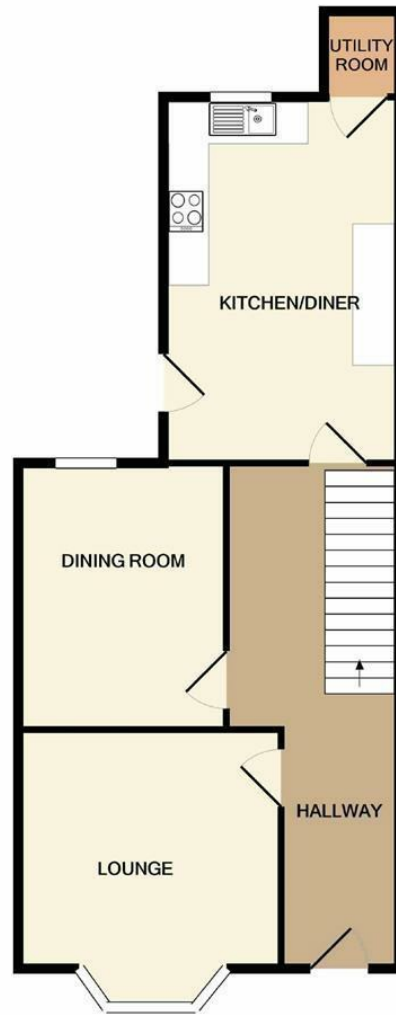
EPC Rating - E

Floor Area - sq ft

Local Authority - Manchester

Council Tax - C





GROUND FLOOR



1ST FLOOR

Measurements are approximate. Not to scale. Illustrative purposes only  
Made with Metropix ©2021



These particulars are believed to be accurate but they are not guaranteed and do not form a contract. Neither Jordan Fishwick nor the vendor or lessor accept any responsibility in respect of these particulars, which are not intended to be statements or representations of fact and any intending purchaser or lessee must satisfy himself by inspection or otherwise as to the correctness of each of the statements contained in these particulars. Any floorplans on this brochure are for illustrative purposes only and are not necessarily to scale.

Offices at: Offices at Chorlton, Didsbury, Disley, Hale, Glossop, Macclesfield, Manchester Deansgate, Manchester Whitworth Street, New Mills, Sale, Wilmslow and Withington

410-412 Barlow Moor Road, Chorlton, Manchester, M21 8AD

[www.jordanfishwick.co.uk](http://www.jordanfishwick.co.uk)