



Jordan fishwick

MANCHESTER
Glynn Gardens



Glynn Gardens, Manchester, M20 2YP

Offers Over £195,000



The Property

A well presented, two double bedroom, ground floor apartment in West Didsbury with easy access to both Burton Road and Princess Parkway. Presented to a high standard throughout and boasting both gas central heating and uPVC double glazing, the living space in outline comprises:- Private entrance, entrance hall with cloaks space, good sized lounge/dining room, modern kitchen with integrated appliances, two double bedrooms, and a contemporary bathroom with white suite. Externally, there are private gardens to the front and a south facing garden at the rear.

Directions

M20 2YP



- Two double bedrooms
- Modern bathroom
- South facing rear garden
- Ground floor
- West Didsbury location
- Gas central heating
- Double glazing
- Private entrance
- Council Tax Band - A / EPC Rating - D

Postcode - M20 2YP

EPC Rating - C

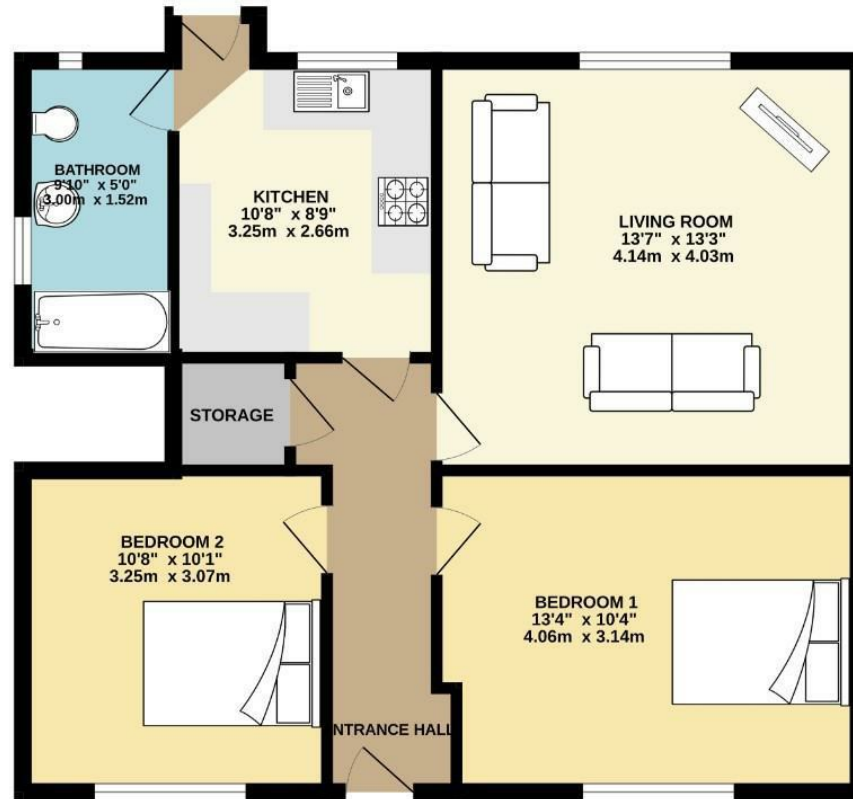
Floor Area - 657.00 sq ft

Local Authority - Manchester City Council

Council Tax - A



GROUND FLOOR
657 sq.ft. (61.0 sq.m.) approx.



TOTAL FLOOR AREA: 657 sq.ft. (61.0 sq.m.) approx.
Measurements are approximate. Not to scale. Illustrative purposes only.
Made with Microplan ©2024



These particulars are believed to be accurate but they are not guaranteed and do not form a contract. Neither Jordan Fishwick nor the vendor or lessor accept any responsibility in respect of these particulars, which are not intended to be statements or representations of fact and any intending purchaser or lessee must satisfy himself by inspection or otherwise as to the correctness of each of the statements contained in these particulars. Any floorplans on this brochure are for illustrative purposes only and are not necessarily to scale.

Offices also at: Wilmslow, Macclesfield, Hale, Sale, Chorlton, Glossop, Manchester & Salford

757-759 Wilmslow Road, Didsbury Village, Manchester

0161 445 4480

didsbury@jordanfishwick.co.uk
www.jordanfishwick.co.uk