



*Jordan fishwick*

Chantry Road Disley Stockport





## Chantry Road Disley Stockport SK12 2BG

£350,000



### The Property

Ideally positioned for all Disley Village amenities including shops, school and railway station, a three bedroom link detached family home. Spacious, well presented accommodation consisting of an entrance porch, open plan living/dining room, fitted kitchen, additional conservatory, wc/utility room, converted garage/workroom with external access, three first floor bedrooms and a shower room. Block paved driveway frontage, enclosed southerly facing private gardens, pvc double glazing and gas central heating. Viewing highly recommended






- Link Detached Family Home
- Three Bedrooms
- Open Plan Living Room
- Additional Conservatory
- Useful Converted Garage/Workshop
- South Facing Private Garden
- Block Paved Driveway
- Convenient Popular Position
- Pvc Double Glazing and Gas Central Heating

**Postcode** SK12 2BG

**EPC Rating** C

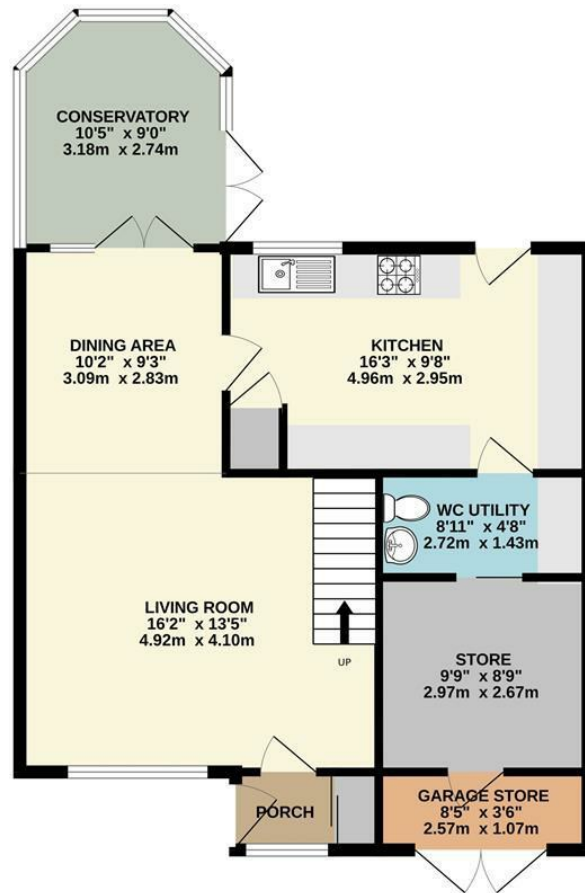
**Local Authority** Cheshire East

**Council Tax** D

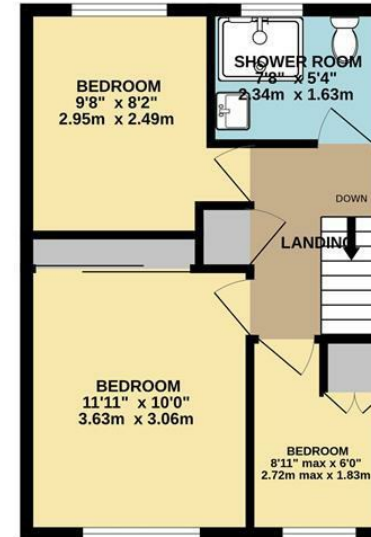
Energy Efficiency Rating		
	Current	Potential
Very energy efficient - lower running costs		
(92 plus) <b>A</b>		
(81-91) <b>B</b>		<b>83</b>
(69-80) <b>C</b>	<b>69</b>	
(55-68) <b>D</b>		
(39-54) <b>E</b>		
(21-38) <b>F</b>		
(1-20) <b>G</b>		
Not energy efficient - higher running costs		
<b>England &amp; Wales</b>	EU Directive 2002/91/EC 	



GROUND FLOOR



1ST FLOOR



Whilst every attempt has been made to ensure the accuracy of the floorplan contained here, measurements of doors, windows, rooms and any other items are approximate and no responsibility is taken for any error, omission or mis-statement. This plan is for illustrative purposes only and should be used as such by any prospective purchaser. The services, systems and appliances shown have not been tested and no guarantee as to their operability or efficiency can be given.  
Made with Metropix ©2024



These particulars are believed to be accurate but they are not guaranteed and do not form a contract. Neither Jordan Fishwick nor the vendor or lessor accept any responsibility in respect of these particulars, which are not intended to be statements or representations of fact and any intending purchaser or lessee must satisfy himself by inspection or otherwise as to the correctness of each of the statements contained in these particulars. Any floorplans on this brochure are for illustrative purposes only and are not necessarily to scale.

Offices at: Chorlton, Didsbury, Disley, Hale, Glossop, Macclesfield, Manchester Deansgate, Manchester Whitworth Street, New Mills, Sale, Wilmslow and Withington

14 Market Street, Disley, Cheshire, SK12 2AA

01663 76 78 78

disley@jordanfishwick.co.uk

www.jordanfishwick.co.uk