



*jordan fishwick*

1 Belfry Close, SK9 2RB  
Guide Price £599,950



## Belfry Close Wilmslow SK9 2RB

Guide Price £599,950




Nestled within a quiet cul-de-sac location on the ever popular Summerfields development in Wilmslow, this four bedroom, three reception room detached property is located on Belfry close. The property comprises in brief of a welcoming entrance hallway which provides access to a useful downstairs WC. Also located on the ground floor is a generously proportioned living room with feature fireplace. There is additionally a separate kitchen with a matching range of fitted base and eyelevel units. There is access from the kitchen to the separate dining room and family room. The dining room benefits from additional access to /from the living room and has UPVC double glazed French patio doors which lead to the rear garden. The separate family room also provides access to the rear garden and could be a home office. Access to the integral garage is via this family room and provides extra internal storage. Located on the first floor there are four bedrooms, the principal bedroom is beautiful decorated and benefits from fitted wardrobes and an ensuite stylish shower room. Both bedroom, two and three are good double rooms and also benefit from built-in wardrobes which provide extra storage. There is a modern family bathroom fitted with a traditional three-piece white suite. Externally, to the rear of the property the garden is enclosed, private and laid mainly to lawn with a patio area. To the front of the property there is a further lawned garden and a driveway which provides off parking for a number of vehicles.



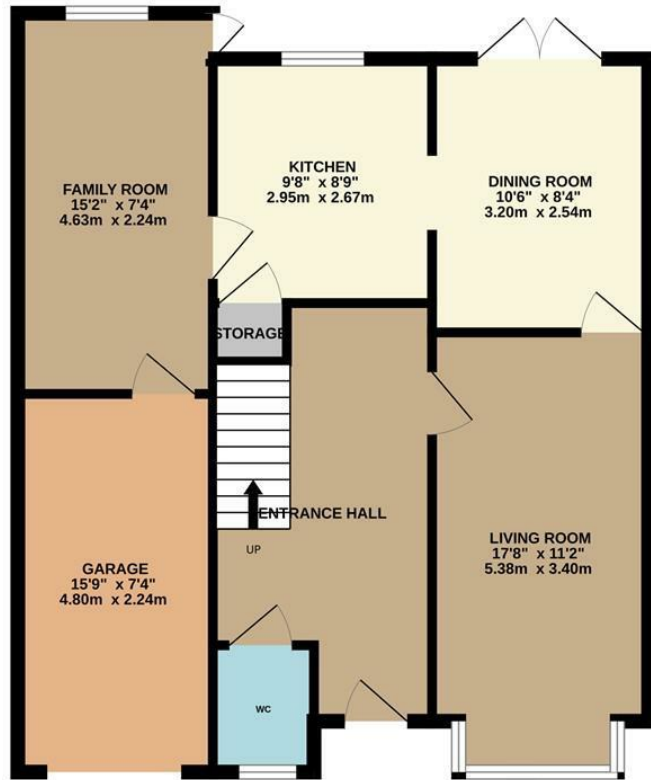
- Quiet location
- Detached home
- Four bedrooms
- Popular location
- Off road parking
- Two bathrooms
- Convenient access to local schools
- Beautiful garden



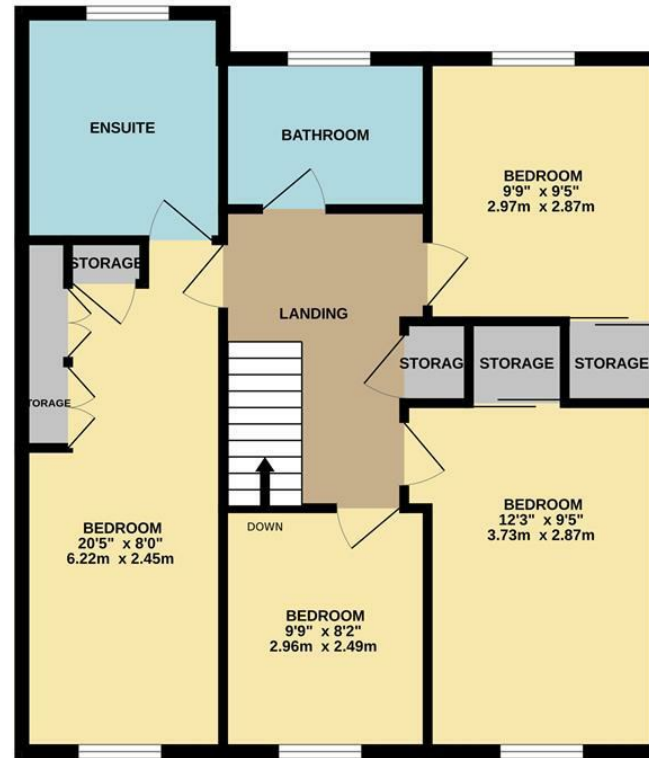
Energy Efficiency Rating		
	Current	Potential
Very energy efficient - lower running costs		
(92 plus) <b>A</b>		
(81-91) <b>B</b>		<b>84</b>
(69-80) <b>C</b>	<b>73</b>	
(55-68) <b>D</b>		
(39-54) <b>E</b>		
(21-38) <b>F</b>		
(1-20) <b>G</b>		
Not energy efficient - higher running costs		
<b>England &amp; Wales</b>	EU Directive 2002/91/EC 	



GROUND FLOOR



1ST FLOOR



Measurements are approximate. Not to scale. Illustrative purposes only  
Made with Metropix ©2024



These particulars are believed to be accurate but they are not guaranteed and do not form a contract. Neither Jordan Fishwick nor the vendor or lessor accept any responsibility in respect of these particulars, which are not intended to be statements or representations of fact and any intending purchaser or lessee must satisfy himself by inspection or otherwise as to the correctness of each of the statements contained in these particulars. Any floorplans on this brochure are for illustrative purposes only and are not necessarily to scale.

Offices at: Chorlton, Didsbury, Disley, Hale, Glossop, Macclesfield, Manchester Deansgate, Manchester Whitworth Street, New Mills, Sale, Wilmslow and Withington

36-38 Alderley Road, Wilmslow, Cheshire, SK9 1JX  
**01625 532000**

wilmslow@jordanfishwick.co.uk  
www.jordanfishwick.co.uk