



jordan fishwick

Millers Vale New Mills High Peak



Millers Vale New Mills High Peak SK22 4QT

£400,000



The Property

Towards the head of a cul-de-sac on a popular, modern small development in New Mills, a stunning three double bedroom, semi-detached townhouse. Forming part of a select development with shared grounds boasting its very own brook, picnic area and access to Sett Valley Trail, this delightful home has to be seen. Convenient for New Mills amenities, within the 10 year new build warranty, high energy efficiency, pvc double glazing, gas central heating, private enclosed landscaped gardens and double driveway. Comprising: ground floor entrance hall, wc, living room and bedroom, two first floor bedrooms with fitted wardrobes, a bathroom with separate shower, fully boarded loft with light and shelving, a fabulous 22ft lower ground floor open plan living dining kitchen with island. Viewing essential.




- Part Of A Select Development
- Three Double Bedrooms Over Three Floors
- Semi-Detached Family Home
- Landscaped Garden And Off Road Parking
- 22ft Living Dining Kitchen
- Remaining New Build Warranty
- Large Shared Communal Grounds with Riverside Picnic Area
- Energy Efficient Home
- Private Direct Access Onto Sett Valley Trail
- Viewing Highly Recommended

Postcode SK22 4QT

EPC Rating B

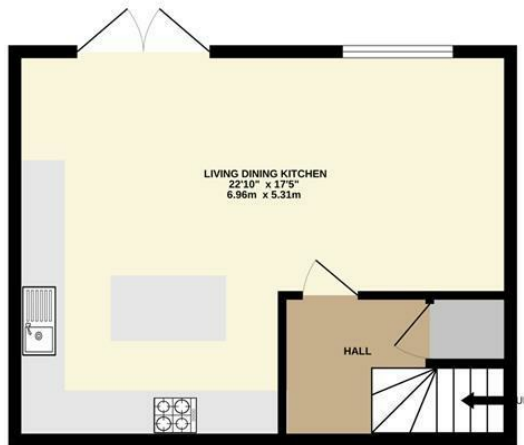
Local Authority High Peak

Council Tax D

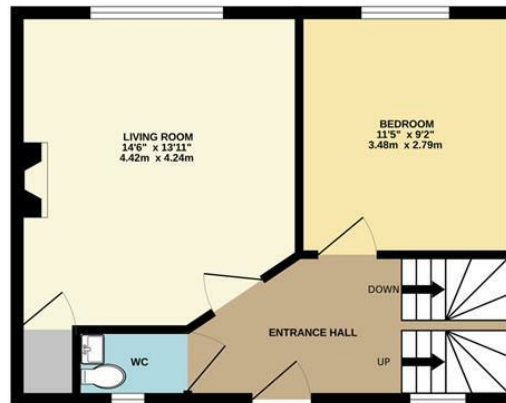
Energy Efficiency Rating		Current	Potential
Very energy efficient - lower running costs			
(92 plus) A			93
(81-91) B		84	
(69-80) C			
(55-68) D			
(39-54) E			
(21-38) F			
(1-20) G			
Not energy efficient - higher running costs			
England & Wales		EU Directive 2002/91/EC 	



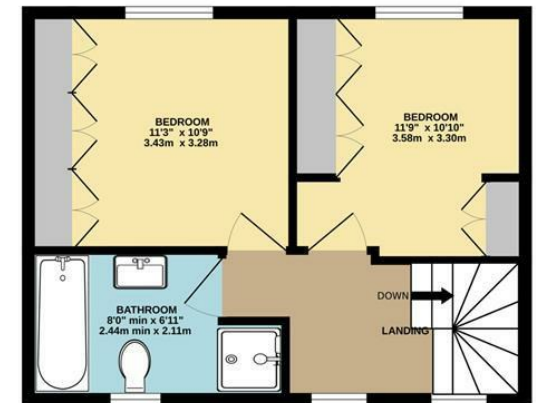
LOWER GROUND FLOOR



GROUND FLOOR



1ST FLOOR



Whilst every attempt has been made to ensure the accuracy of the floorplan contained here, measurements of doors, windows, rooms and any other items are approximate and no responsibility is taken for any error, omission or mis-statement. This plan is for illustrative purposes only and should be used as such by any prospective purchaser. The services, systems and appliances shown have not been tested and no guarantee as to their operability or efficiency can be given.
Made with Metropix ©2024



These particulars are believed to be accurate but they are not guaranteed and do not form a contract. Neither Jordan Fishwick nor the vendor or lessor accept any responsibility in respect of these particulars, which are not intended to be statements or representations of fact and any intending purchaser or lessee must satisfy himself by inspection or otherwise as to the correctness of each of the statements contained in these particulars. Any floorplans on this brochure are for illustrative purposes only and are not necessarily to scale.

Offices at: Chorlton, Didsbury, Disley, Hale, Glossop, Macclesfield, Manchester Deansgate, Manchester Whitworth Street, New Mills, Sale, Wilmslow and Withington

14 Market Street, Disley, Cheshire, SK12 2AA

01663 76 78 78

disley@jordanfishwick.co.uk

www.jordanfishwick.co.uk