



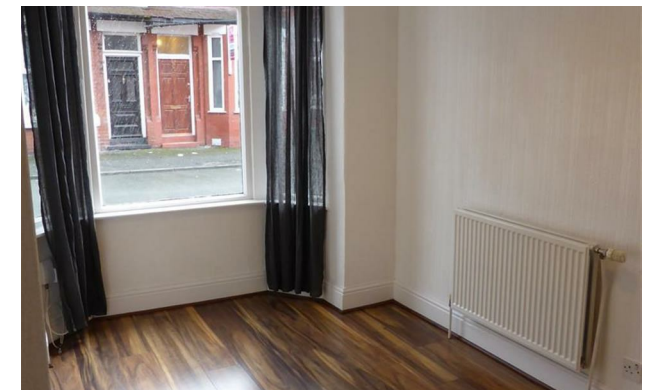
*Jordan fishwick*

32 Arnside Street, Fallowfield, M14 7PF  
£1,150 Per Calendar Month



## Arnside Street Manchester M14 7PF

£1,150 Per Calendar Month

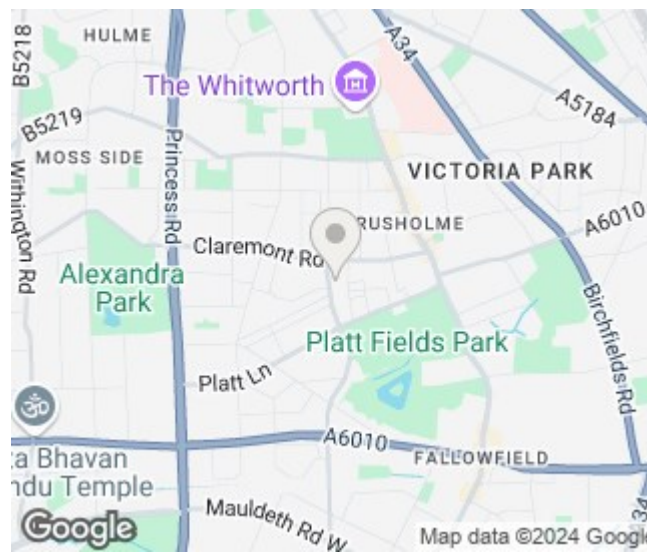


### The Property

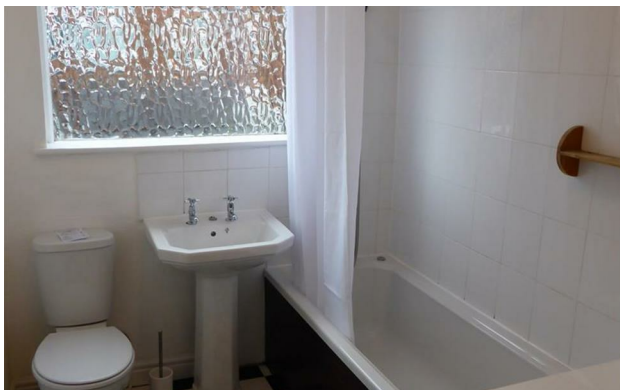
\*\*\* AVAILABLE OCTOBER \*\*\* A well-presented two double bedroom terrace property, perfectly suited to a professional couple or small family. The property offers generous living space throughout and is conveniently located close to all major transport links and local amenities. In brief, the property comprises; entrance hall, front reception room and lounge with laminate flooring and separate stylishly presented fitted kitchen. To the first floor is one double bedroom and a smaller single along with a modern fitted bathroom suite. Viewing is highly recommended. The property is offered on a part furnished basis. Furniture in photos are all that is to be provided. To view apply Withington 0161 438 2411.

EPC Rating - D

- Available October
- Two Bedrooms
- Two Reception Rooms
- Part Furnished
- Close to all Local Amenities
- Ideal for a Couple or Small Family
- Rear Yard
- On Street Parking
- Council Tax Band A
- EPC Rating D



Energy Efficiency Rating		
	Current	Potential
Very energy efficient - lower running costs		
(92 plus) <b>A</b>		
(81-91) <b>B</b>		<b>86</b>
(69-80) <b>C</b>		
(55-68) <b>D</b>	<b>61</b>	
(39-54) <b>E</b>		
(21-38) <b>F</b>		
(1-20) <b>G</b>		
Not energy efficient - higher running costs		
<b>England &amp; Wales</b>	EU Directive 2002/91/EC	





These particulars are believed to be accurate but they are not guaranteed and do not form a contract. Neither Jordan Fishwick nor the vendor or lessor accept any responsibility in respect of these particulars, which are not intended to be statements or representations of fact and any intending purchaser or lessee must satisfy himself by inspection or otherwise as to the correctness of each of the statements contained in these particulars. Any floorplans on this brochure are for illustrative purposes only and are not necessarily to scale.

Offices at: Offices at Chorlton, Didsbury, Disley, Hale, Glossop, Macclesfield, Manchester Deansgate, Manchester Whitworth Street, New Mills, Sale, Wilmslow and Withington