



jordan fishwick

MANCHESTER
Danes Road



Danes Road, Manchester, M14 5JS

£200,000



The Property

A beautiful and spacious two bedroomed duplex apartment occupying a first and second floor position within a popular purpose built development. Located in a very quiet area of Fallowfield, sandwiched between Birchfields and Platt Fields Park. The apartment benefits from it's own private entrance and ideal for first time buyers or investors but all buyers are welcome. Comprising entrance with stairs up to entrance landing, with separate living room and kitchen with a serving hatch between and double bedroom. A further flight of stairs takes you to the bathroom with three piece suite and the large master bathroom. The development is set in communal grounds with residents and visitors parking. ****NO ONWARD CHAIN****

Directions

M14 5JS



- A two double bedroom duplex apartment
- Recently extended long lease
- Excellent location close to amenities, transport links and parks
- Double glazing and gas central heating are both installed
- Accommodation over the first and second floors
- Private residents parking
- No chain

Postcode - M14 5JS

EPC Rating - C

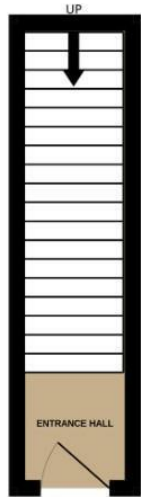
Floor Area - 742.00 sq ft

Local Authority - Manchester City Council

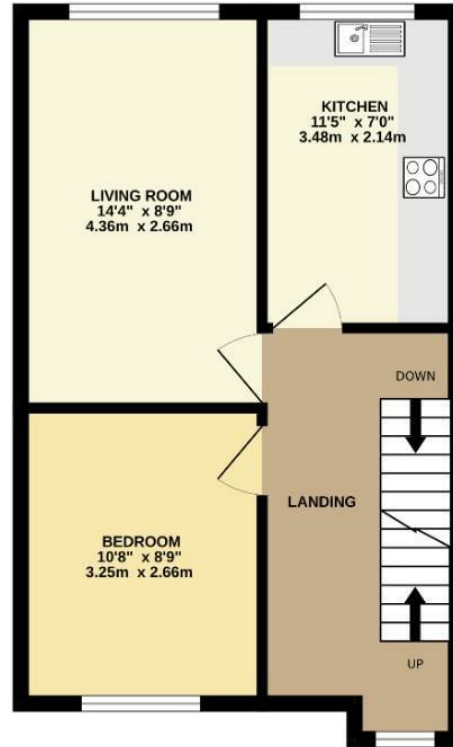
Council Tax - B



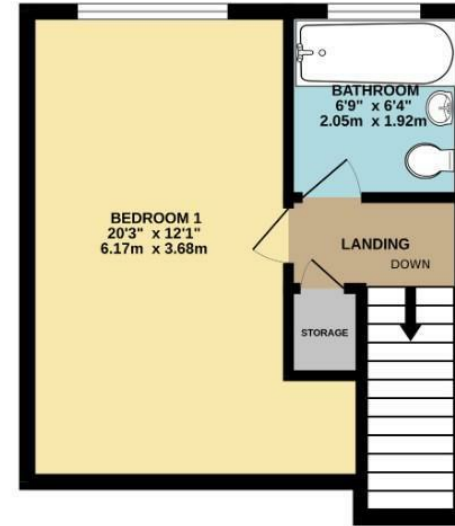
GROUND FLOOR



1ST FLOOR



2ND FLOOR



Measurements are approximate. Not to scale. Illustrative purposes only
Made with Metropix ©2024



These particulars are believed to be accurate but they are not guaranteed and do not form a contract. Neither Jordan Fishwick nor the vendor or lessor accept any responsibility in respect of these particulars, which are not intended to be statements or representations of fact and any intending purchaser or lessee must satisfy himself by inspection or otherwise as to the correctness of each of the statements contained in these particulars. Any floorplans on this brochure are for illustrative purposes only and are not necessarily to scale.

Offices also at: Wilmslow, Macclesfield, Hale, Sale, Chorlton, Glossop, Manchester & Salford

757-759 Wilmslow Road, Didsbury Village, Manchester

0161 445 4480

didsbury@jordanfishwick.co.uk
www.jordanfishwick.co.uk