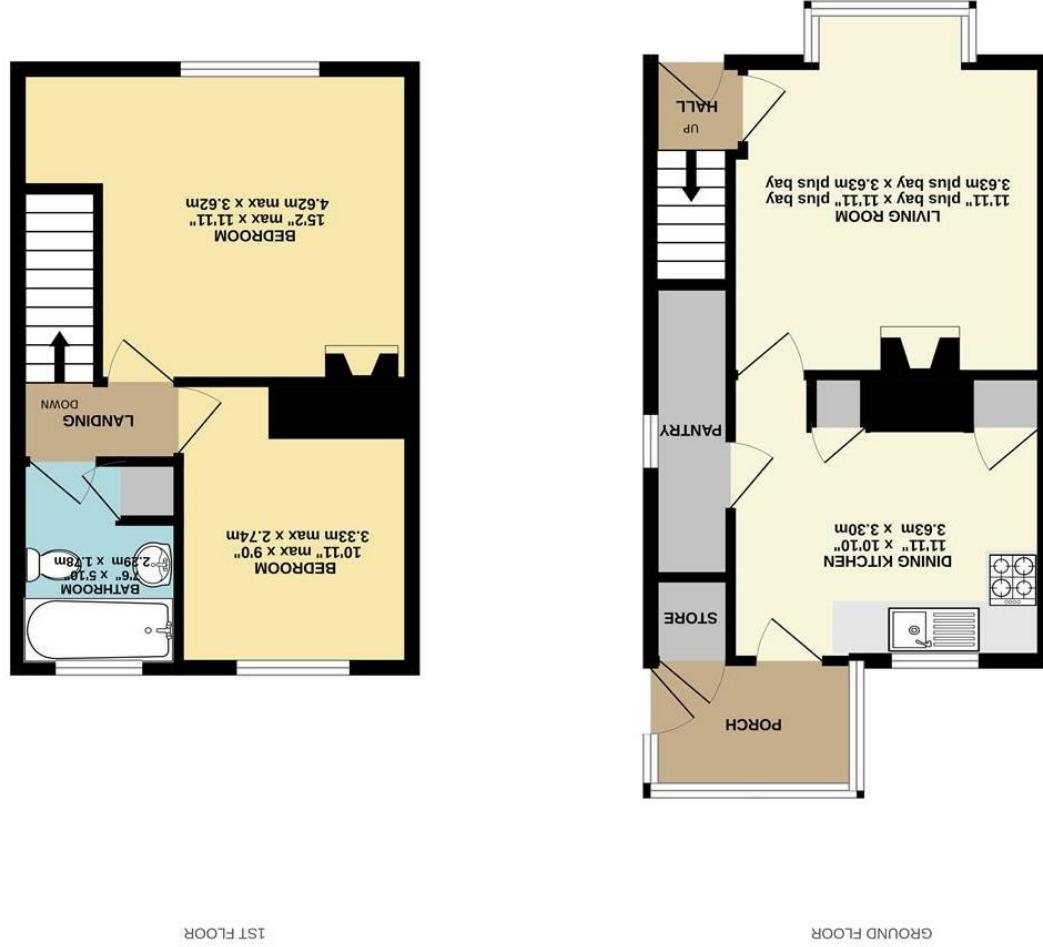


These particulars are believed to be accurate but they are not guaranteed and do not form a contract. Neither Jordan Fishwick nor the vendor or lessor accept any responsibility in respect of these particulars, which are not intended to be statements or representations of fact and any intending purchaser or lessee must satisfy himself by inspection or otherwise as to the correctness of each of the statements contained in these particulars. Any floorplans on this brochure are for illustrative purposes only and are not necessarily to scale.

While every attempt has been made to ensure the accuracy of the English contained here, measurements of doors, windows, rooms and any other items are approximate and no responsibility is taken for any error, omission or mis-statement. This plan is for business purposes only and should be used as such by any prospective purchaser. The services, fixtures and appliances shown have not been tested and no guarantee, as to their quality or efficacy can be given. Made with AutoCAD 2024



122 High Hill Road, New Mills,  
High Peak, SK22 4HQ

£199,950



### The Property

\*\*\* FANTASTIC POTENTIAL \*\*\* Conveniently located for all New Mills amenities and close to the Sett Valley Trail, a bay fronted red brick end of terrace. Set back from the road and boasting off road parking with private garden areas, this spacious two double bedroom property is ideal for many types of buyer. In need of updating and comprising: entrance hall, living room, dining kitchen, pantry, rear porch, two first floor bedrooms and bathroom. Viewing highly recommended.



- Bay Fronted End Of Terrace
- Two Double Bedrooms
- Convenient Position
- Close to The Sett Valley Trail
- Vacant Possession
- Fantastic Potential
- Gardens and Off Road Parking
- Double Glazing

Postcode - SK22 4HQ  
EPC Rating -  
Local Authority - High Peak  
Council Tax - B

