



*Jordan fishwick*

Buxton Road Whaley Bridge High Peak



## Buxton Road Whaley Bridge High Peak SK23 7JE

£245,000



### The Property

\*\*\* NO ONWARD CHAIN \*\*\* A delightful two bedroom mid terrace property which has been recently refurbished by its current owners with a tasteful & modern kitchen fitted. The property benefits from having a loft conversion with eaves storage. In brief the property comprises: Living room, spacious kitchen/diner with storage, utility room and downstairs w.c. To the first floor are two good sized bedrooms, modern family bathroom and the second floor loft conversion with eaves storage. Externally, to the front of the property is a spacious two tiered garden with a decked area whilst to the rear is a yard with outhouses for storage. The properties location is highly desirable as it is situated within walking distance of the local amenities on offer and train station. Viewings of this property are highly recommended.




- NO ONWARD CHAIN
- Recently Refurbished
- Loft Conversion
- Spacious Front Garden
- Rear Yard with Storage
- Two Bedrooms
- Double Glazing
- Walking Distance to Whaley Bridge

**Postcode** SK23 7JE

**EPC Rating**

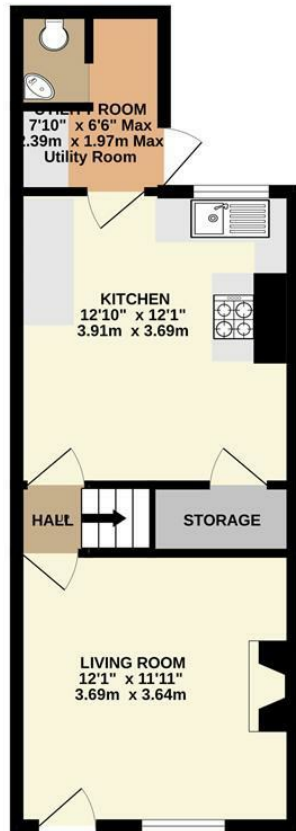
**Local Authority** High Peak

**Council Tax** B

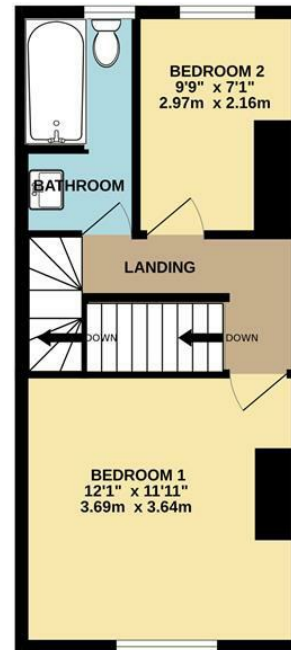
Energy Efficiency Rating		Current	Potential
Very energy efficient - lower running costs			
(92 plus)	A		
(81-91)	B		
(69-80)	C		
(55-68)	D		
(39-54)	E		
(21-38)	F		
(1-20)	G		
Not energy efficient - higher running costs			
<b>England &amp; Wales</b>		EU Directive 2002/91/EC 	



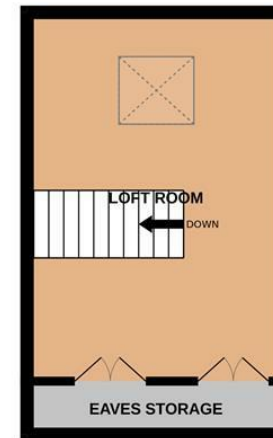
GROUND FLOOR



1ST FLOOR



2ND FLOOR



Whilst every attempt has been made to ensure the accuracy of the floorplan contained here, measurements of doors, windows, rooms and any other items are approximate and no responsibility is taken for any error, omission or mis-statement. This plan is for illustrative purposes only and should be used as such by any prospective purchaser. The services, systems and appliances shown have not been tested and no guarantee as to their operability or efficiency can be given.  
Made with Metropix ©2024



These particulars are believed to be accurate but they are not guaranteed and do not form a contract. Neither Jordan Fishwick nor the vendor or lessor accept any responsibility in respect of these particulars, which are not intended to be statements or representations of fact and any intending purchaser or lessee must satisfy himself by inspection or otherwise as to the correctness of each of the statements contained in these particulars. Any floorplans on this brochure are for illustrative purposes only and are not necessarily to scale.

Offices at: Chorlton, Didsbury, Disley, Hale, Glossop, Macclesfield, Manchester Deansgate, Manchester Whitworth Street, New Mills, Sale, Wilmslow and Withington

14 Market Street, Disley, Cheshire, SK12 2AA

01663 76 78 78

disley@jordanfishwick.co.uk

www.jordanfishwick.co.uk