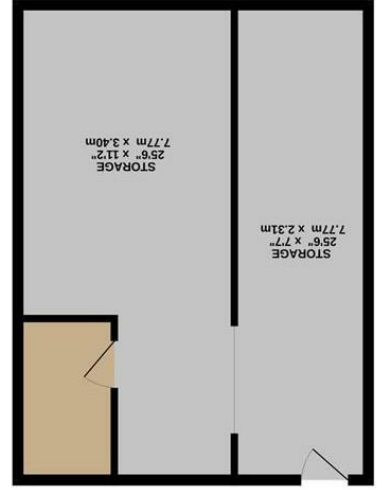
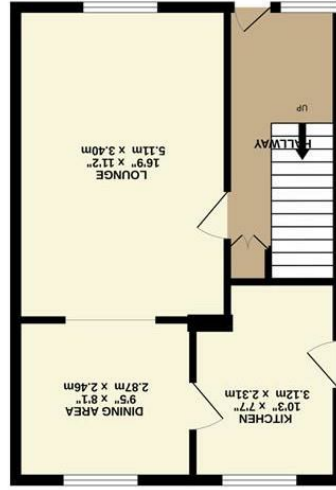
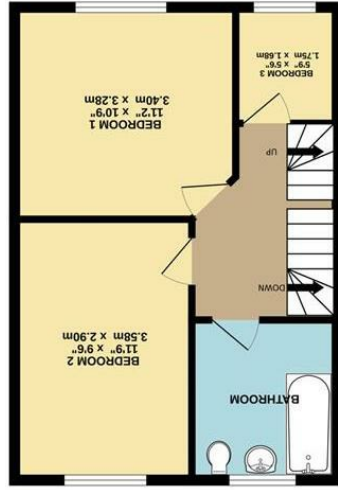
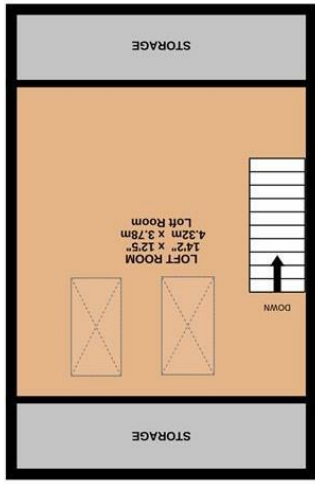


These particulars are believed to be accurate but they are not guaranteed and do not form a contract. Neither Jordan Fishwick nor the vendor or lessor accept any responsibility in respect of these particulars, which are not intended to be statements or representations of fact and any intending purchaser or lessee must satisfy himself by inspection or otherwise as to the correctness of each of the statements contained in these particulars. Any floorplans on this brochure are for illustrative purposes only and are not necessarily to scale.

Whilst every attempt has been made to ensure the accuracy of the floorplan contained here, measurements of doors, windows, rooms and any other items are approximate and no responsibility is taken for any error, omission or mis-statement. This plan is for illustrative purposes only and should be used as such by any prospective purchaser. The services, systems and appliances shown have not been tested and no guarantee as to their operability or efficiency can be given.

Made with Metropix ©2024





36 Parkland Avenue, New Mills,  
High Peak, SK22 4DT

£290,000



### The Property

Welcome to Parkland Avenue, New Mills, High Peak - a charming semi-detached house with a lot to offer! This delightful property boasts two reception rooms, perfect for entertaining guests or simply relaxing with your loved ones. With three bedrooms, there's ample space for a growing family or for those in need of a home office.

Additionally, the large loft room provides versatility, whether you choose to convert it into a cozy hideaway or a functional workspace.

One of the standout features of this home is the stunning open views that can be enjoyed from various vantage points. Imagine waking up to picturesque scenery every morning! There is a useful sub floor workshop, utility and storage area accessed via the rear garden

The well-maintained gardens are ideal for green-fingered enthusiasts or for those who simply enjoy spending time outdoors. The driveway parking adds a practical touch, ensuring that you never have to worry about finding a spot for your vehicle.

Located in a popular residential area, this property offers not just a house, but a place to call home. Don't miss out on the opportunity to make this lovely house your own and enjoy the peaceful surroundings of Parkland Avenue.



- Well Appointed Semi Detached Property
- Stunning Open Views to Rear
- Lovely Well Maintained Gardens
- Three Bedrooms plus Large Loft Room
- Two Reception Rooms
- Large Sub Floor Workshop, Utility and Storage Area
- Popular Residential Location
- Driveway Parking

Postcode - SK22 4DT  
EPC Rating -  
Local Authority - High Peak  
Council Tax - C

