

f

LET BY

f

*Jordan fishwick
lettings*

WITHINGTON

0161-438 2411

Jordan fishwick

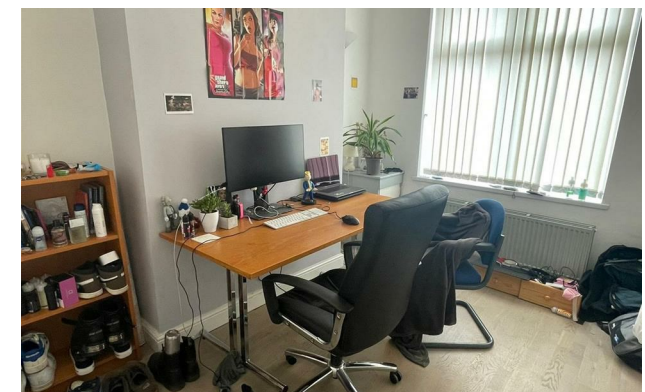
125 Thornton Road, Fallowfield, M14 7NT

£1,250 Per Calendar Month



Thornton Road Manchester M14 7NT

£1,250 Per Calendar Month



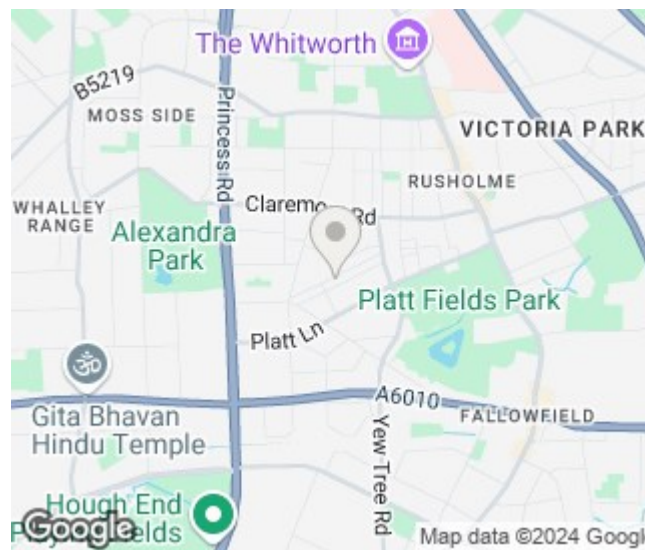
The Property

View our Virtual Tour Here - <https://youtu.be/WoCD-R1oOGE>

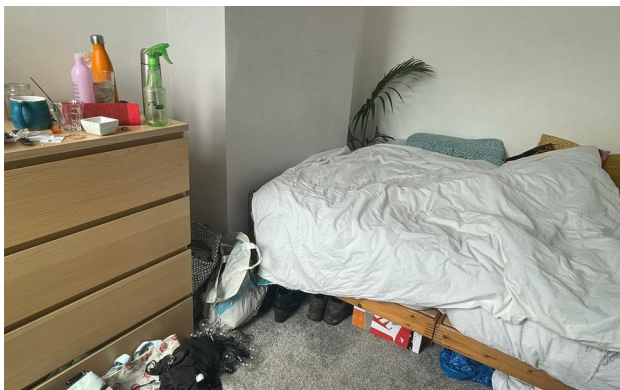
***** VIEWINGS NOW FULLY BOOKED *** AVAILABLE SEPTEMBER **** We have a lovely presented two double bedroom terraced house, in close proximity to Alexandra Park with good transport links and local amenities. Making it perfectly suited to a couple, professional sharers or a small family. Briefly comprising of two reception rooms, large kitchen with appliances, two large double bedrooms, modern fitted bathroom & converted loft space. To the rear is a good sized yard providing ample space for relaxing. Viewing is highly recommended. The property is offered on a furnished basis. Full redecoration for a new tenant will be taking place once vacant. To view call Withington 0161 438 2411.

EPC Rating - E

- Available August
- Two Double Bedrooms
- Converted Attic Space
- Fully Furnished
- Ideal for Couples or Professional Sharers
- Redecoration August 2024
- Rear Yard
- On Street Parking
- Council Tax Band A
- EPC Rating E



Energy Efficiency Rating		
	Current	Potential
Very energy efficient - lower running costs		
(92 plus) A		
(81-91) B		84
(69-80) C		
(55-68) D		
(39-54) E	45	
(21-38) F		
(1-20) G		
Not energy efficient - higher running costs		
England & Wales	EU Directive 2002/91/EC	





These particulars are believed to be accurate but they are not guaranteed and do not form a contract. Neither Jordan Fishwick nor the vendor or lessor accept any responsibility in respect of these particulars, which are not intended to be statements or representations of fact and any intending purchaser or lessee must satisfy himself by inspection or otherwise as to the correctness of each of the statements contained in these particulars. Any floorplans on this brochure are for illustrative purposes only and are not necessarily to scale.

Offices at: Offices at Chorlton, Didsbury, Disley, Hale, Glossop, Macclesfield, Manchester Deansgate, Manchester Whitworth Street, New Mills, Sale, Wilmslow and Withington