



jordan fishwick

DIDSBURY
School Lane



School Lane, Didsbury, M20 6JB

Guide Price £275,000



The Property

A modern, TWO DOUBLE BEDROOM, TWO BATHROOM apartment with a LARGE SOUTHERLY FACING SUN TERRACE forming part of a select modern development with SECURE UNDERGROUND PARKING and a great location, being within a short stroll of Didsbury Village and the Metrolink. 712 sq ft. Ready to move into and with lift access to all floors, the living space includes a generous entrance hall, open plan living area with Juliette balcony, fitted kitchen with a range of units, two double bedrooms, the main with a modern en-suite shower room and walk-out balcony, the second with a large, private, south-facing sun terrace and finally the generous main bathroom. No onward chain.

Directions

M20 6JB



- Modern apartment
- Select purpose built development
- Two double bedrooms
- Main bathroom & en-suite shower room
- Large sun terrace & separate walk-out balcony
- Open plan living area
- Fitted kitchen
- Secure underground parking
- Close to Metrolink & Didsbury Village
- No onward chain

Postcode - M20 6JB

EPC Rating - C

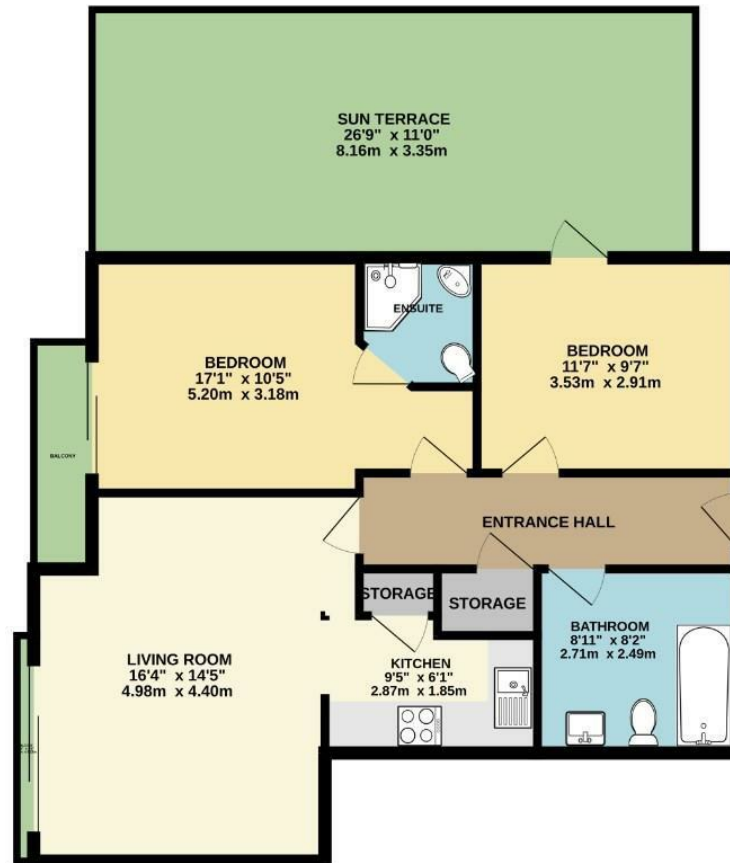
Floor Area - 712.00 sq ft

Local Authority - Manchester City Council

Council Tax - C



712 sq.ft. (66.2 sq.m.) approx.



TOTAL FLOOR AREA: 712 sq.ft. (66.2 sq.m.) approx.
Measurements are approximate. Not to scale. Illustrative purposes only.
Made with Microtype ©2024



These particulars are believed to be accurate but they are not guaranteed and do not form a contract. Neither Jordan Fishwick nor the vendor or lessor accept any responsibility in respect of these particulars, which are not intended to be statements or representations of fact and any intending purchaser or lessee must satisfy himself by inspection or otherwise as to the correctness of each of the statements contained in these particulars. Any floorplans on this brochure are for illustrative purposes only and are not necessarily to scale.

Offices also at: Wilmslow, Macclesfield, Hale, Sale, Chorlton, Glossop, Manchester & Salford

757-759 Wilmslow Road, Didsbury Village, Manchester

0161 445 4480

didsbury@jordanfishwick.co.uk
www.jordanfishwick.co.uk