



jordan fishwick

WEST DIDSBURY
Houseman Crescent



Houseman Crescent, West Didsbury, M20 2JY

£270,000



The Property

A stylish and superbly presented, TWO DOUBLE BEDROOM, TWO BATHROOM second floor apartment forming part of a POPULAR purpose built development in WEST DIDSBURY. 632 sq ft. Constructed by Messrs David Wilson Homes just over 10 years ago and boasting numerous noteworthy features to include an open plan living kitchen with 'Juliette' balcony off and a range of modern units with integrated appliances, master bedroom with en-suite shower room, additional double bedroom and white bathroom suite with chrome fittings, uPVC double glazing, modern electric heating, lift access to all floors, undercover allocated parking and an excellent location which is just a 'short stroll' from the bars, restaurants and shops on Burton Road. There is also easy access to the Metrolink, City Centre and motorway network,

Directions

M20 2JY



- Superb second floor apartment
- Popular development
- Great location
- Living area with Juliette balcony
- Modern kitchen & bathroom
- Two double bedrooms
- En-suite shower room
- Lift access to all floors
- Allocated undercover parking

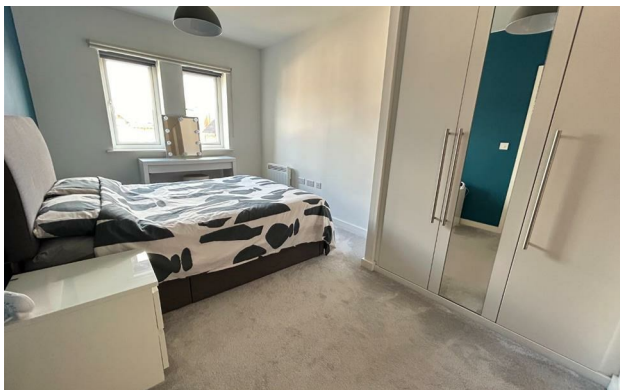
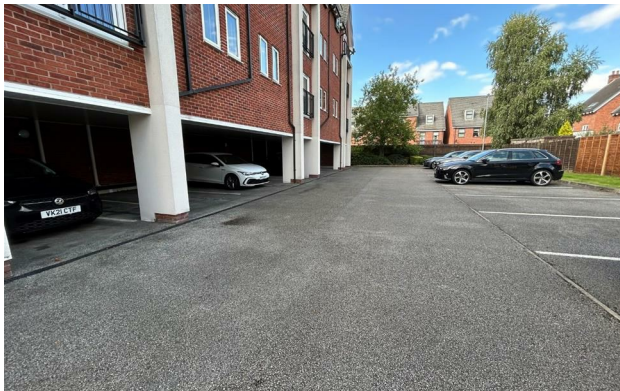
Postcode - M20 2JY

EPC Rating - C

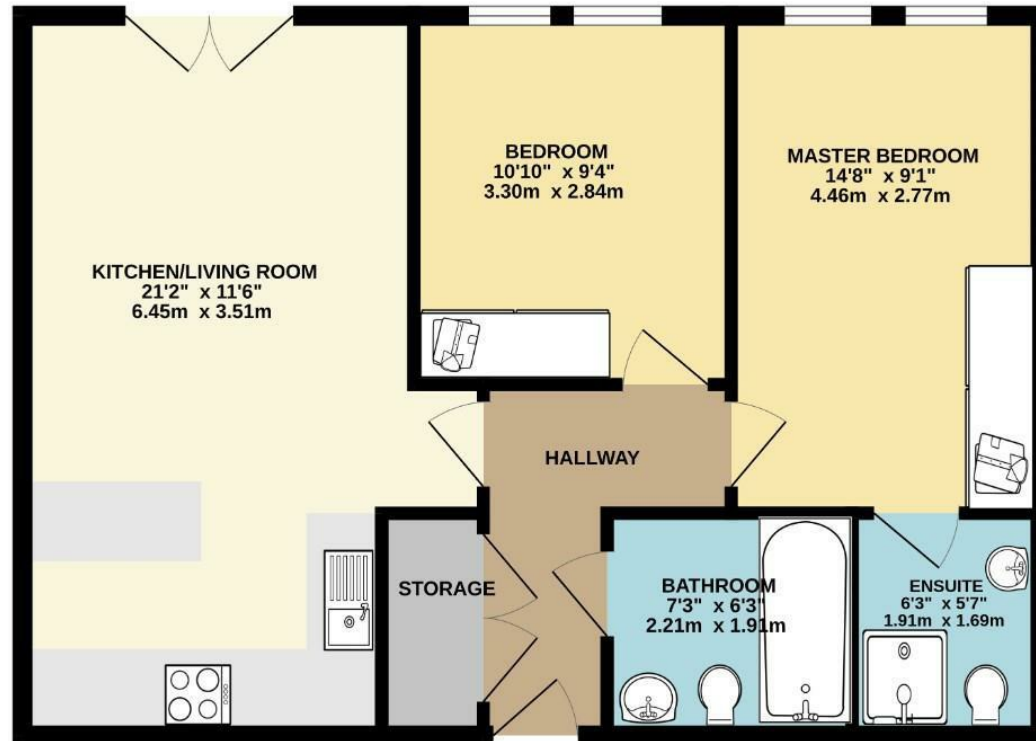
Floor Area - 632.00 sq ft

Local Authority - Manchester City Council

Council Tax - C



SECOND FLOOR
632 sq.ft. (58.8 sq.m.) approx.



TOTAL FLOOR AREA: 632 sq.ft. (58.8 sq.m.) approx.
Measurements are approximate. Not to scale. Illustrative purposes only.
Made with Metropix ©2024



These particulars are believed to be accurate but they are not guaranteed and do not form a contract. Neither Jordan Fishwick nor the vendor or lessor accept any responsibility in respect of these particulars, which are not intended to be statements or representations of fact and any intending purchaser or lessee must satisfy himself by inspection or otherwise as to the correctness of each of the statements contained in these particulars. Any floorplans on this brochure are for illustrative purposes only and are not necessarily to scale.

Offices also at: Wilmslow, Macclesfield, Hale, Sale, Chorlton, Glossop, Manchester & Salford

757-759 Wilmslow Road, Didsbury Village, Manchester

0161 445 4480

didsbury@jordanfishwick.co.uk
www.jordanfishwick.co.uk