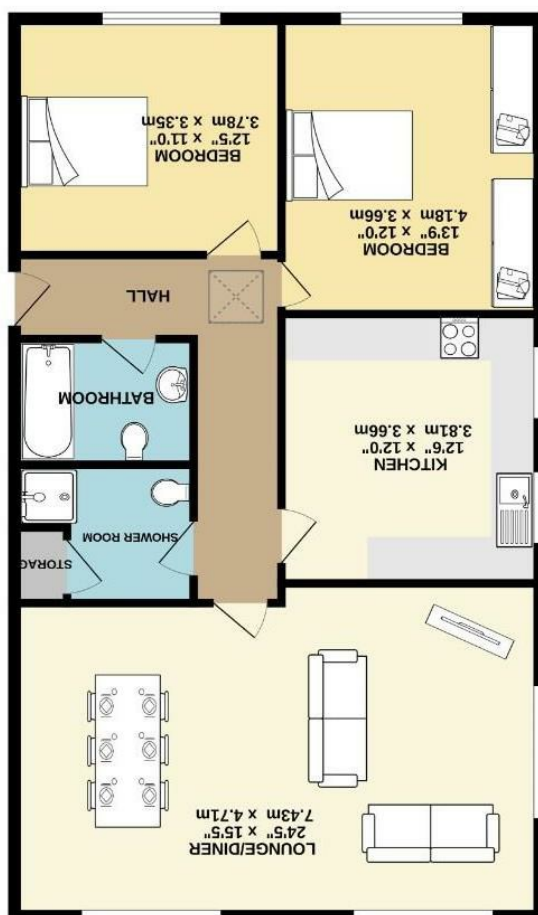


These particulars are believed to be accurate but they are not guaranteed and do not form a contract. Neither Jordan Fishwick nor the vendor or lessor accept any responsibility in respect of these particulars, which are not intended to be statements or representations of fact and any intending purchaser or lessee must satisfy himself by inspection or otherwise as to the correctness of each of the statements contained in these particulars. Any floorplans on this brochure are for illustrative purposes only and are not necessarily to scale.

TOTAL FLOOR AREA: 1033sq. ft. (96.0 sq.m.) approx.  
Measurements are approximate. Not to scale. Intended for illustrative purposes only.  
Made with AutoCAD 2024



FLOOR NAME  
1033 sq. ft. (96.0 sq.m.) approx.







Station Road, Heaton Mersey  
SK4 3EX

£270,000

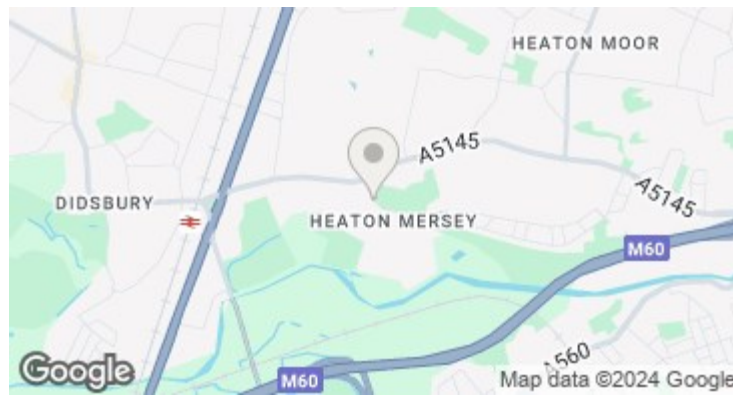


### The Property

A stylish TOP FLOOR apartment, recently modernised throughout by the current owners, with two excellent double bedrooms and well presented living space extending over 1,000 sq ft. Numerous noteworthy features include a light & spacious lounge/dining room with open views over the Peak District, a separate modern kitchen, tiled shower room, master bedroom with ample fitted wardrobe space and a second double bedroom, both with views over the local park, and a re-fitted bathroom fitted with a white suite. In addition, there are modern electric heaters and double glazing. Externally there is residents parking with an allocated parking space and a private garage for parking or storage. A great location which is within easy reach of Didsbury, Heaton Mersey, local schools, tram stop and train station.

### Directions

SK4 3EX



- Two double bed top floor Apartment
- Newly refurbished by current owners
- Over 1030sq ft of living space
- Living room with open views
- Garage and allocated parking space
- Short walk to Metro Station
- Extended lease & service charge only £85pcm

Postcode - SK4 3EX

EPC Rating - F

Floor Area - 1033.00 sq ft

Local Authority - SMBC

Council Tax - C

