



20 Kelsall Street, Sale, M33 7TF

Offers Over £300,000





Jordan Fishwick

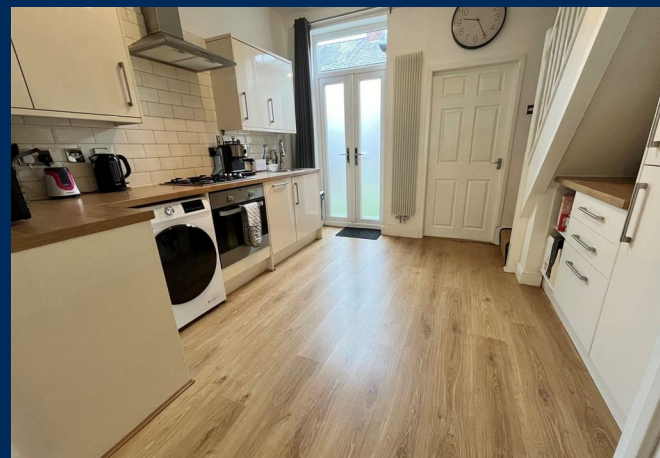
- Immaculate Two Double Bedroom Terrace
- Permit On Street Parking
- Courtyard Garden to Rear
- Walking Distance to Sale / Metrolink
- EPC Rating D
- Open Plan Living
- Modern Fitted Kitchen with Some Integrated Appliances
- Well Presented Throughout
- Springfield Primary School Catchment
- Council Tax Band B

Impressive two double bedroom, mid terrace house, located in a highly sought after area of Sale and within walking distance to Sale town centre, the Metrolink, Bridgewater canal and Springfield Primary School.

Beautifully presented throughout, the property briefly comprises: bay fronted lounge/diner with stylish plantation shutters and feature electric fire, open to the generous kitchen with ample wall and base units, integrated oven, hob, extractor, fridge/ freezer and dishwasher and a bathroom with four piece suite. To the first floor there are two good size double bedrooms, both benefitting from storage cupboards.

Externally this property benefits from a private courtyard to the rear with useful garden store and on street permit road parking to the front. The property is warmed by gas central heating and has double glazing throughout. Viewing highly recommended!! Trafford Council Tax Band B - EPC Rating D.

Offers Over £300,000







Floor Plans

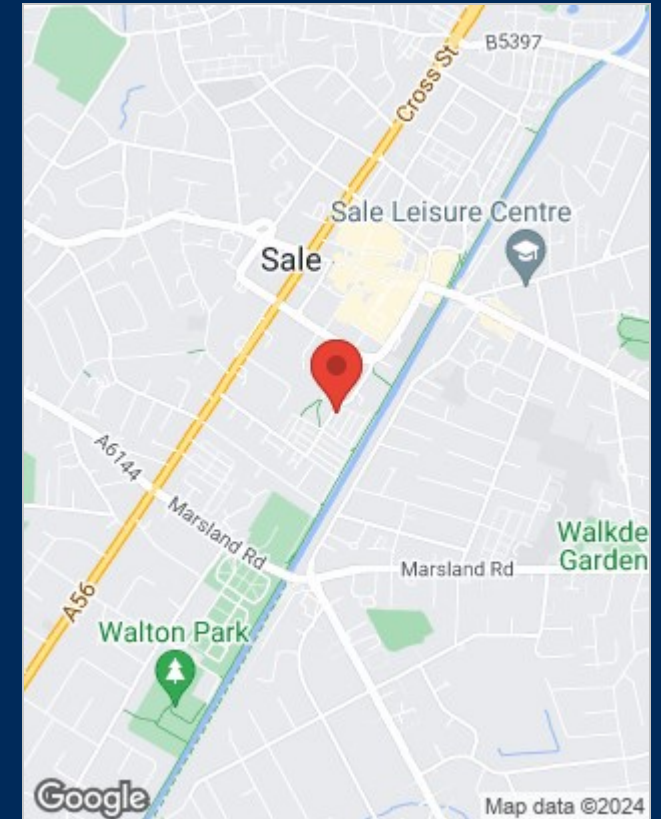


Viewing

Please contact our Sale Office on 0161 962 2828 if you wish to arrange a viewing appointment for this property or require further information.

The particulars are set out as a general outline only for the guidance of intended purchasers or lessees, and do not constitute, any part of a contract. Nothing in these particulars shall be deemed to be a statement that the property is in good structural condition or otherwise nor that any of the services, appliances, equipment or facilities are in good working order. Purchasers should satisfy themselves of this prior to purchasing.

Location Map



Energy Performance Graph

