



Jordan fishwick

Apt 3803 Beetham Tower, 301 Deansgate,
£2,000 Per Calendar Month



Beetham Tower Manchester M3 4LU

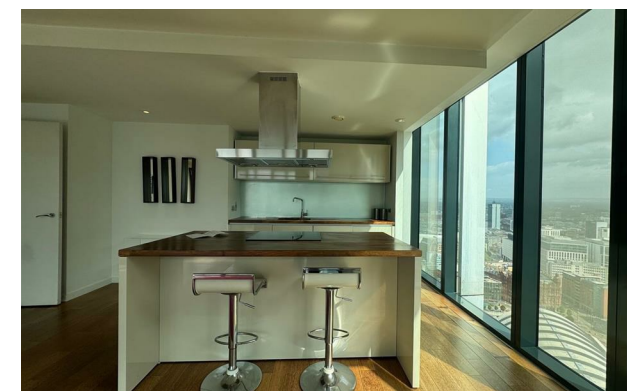
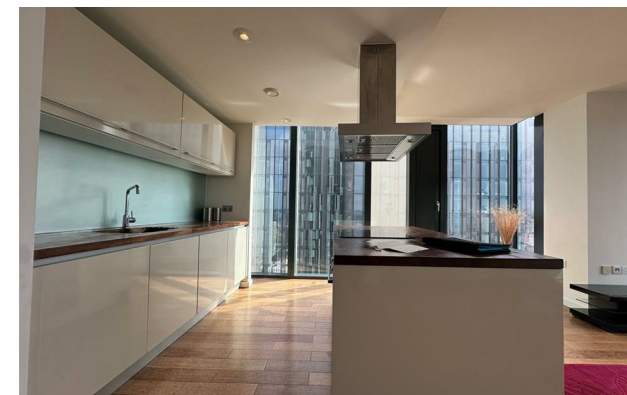
£2,000 Per Calendar Month

The Property

Available Now! Jordan Fishwick presents this apartment with breath-taking corner views from the 38th floor over the City coming as standard, you won't fail to be impressed here.


Entrance hall that leads into a open plan spacious living room/ kitchen with floor to ceiling corner windows, with a fitted kitchen with oven, hob, dishwasher, washer/dryer. Both bedrooms have spectacular views with the master having fitted wardrobes and en-suite shower. Separate bathroom with shower. Part-Furnished. One LARGE underground parking space allocated to the flat. No Students or pets. Tax Band E. EPC Rating TBC.

VIDEO/PHOTO OFFERS NOT ACCEPTED - PLEASE BOOK AN INPERSON VIEWING



- Available Now
- 2 Bedroom & 2 Bathrooms
- Corner Apartment
- Part- furnished
- Tax Band E
- EPC Rating TBC
- ONE LARGE parking space
- Deansgate Location



Energy Efficiency Rating		
	Current	Potential
Very energy efficient - lower running costs		
(92 plus) A		
(81-91) B	82	83
(69-80) C		
(55-68) D		
(39-54) E		
(21-38) F		
(1-20) G		
Not energy efficient - higher running costs		
England & Wales	EU Directive 2002/91/EC 	





These particulars are believed to be accurate but they are not guaranteed and do not form a contract. Neither Jordan Fishwick nor the vendor or lessor accept any responsibility in respect of these particulars, which are not intended to be statements or representations of fact and any intending purchaser or lessee must satisfy himself by inspection or otherwise as to the correctness of each of the statements contained in these particulars. Any floorplans on this brochure are for illustrative purposes only and are not necessarily to scale.

Offices at: Offices at Chorlton, Didsbury, Disley, Hale, Glossop, Macclesfield, Manchester Deansgate, Manchester Whitworth Street, New Mills, Sale, Wilmslow and Withington