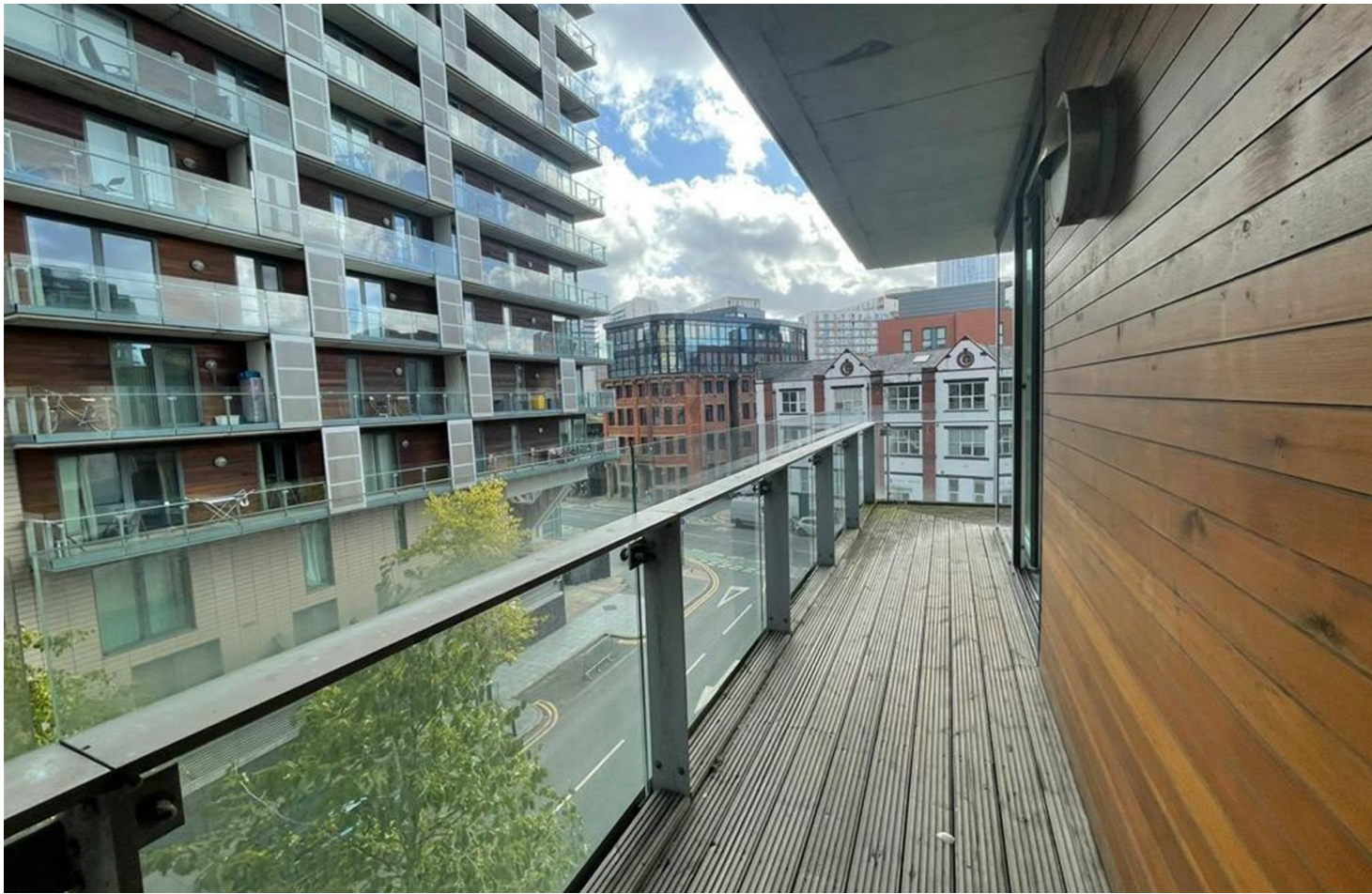




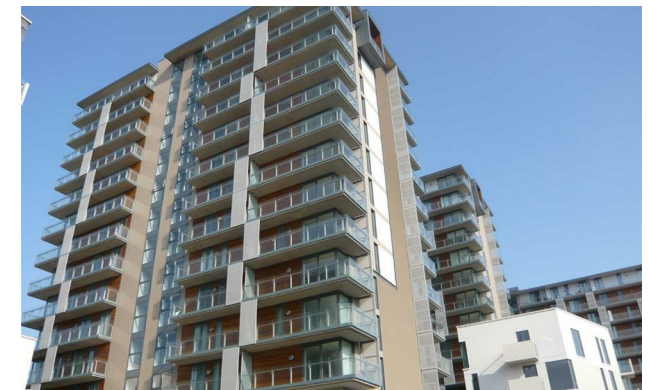
jordan fishwick

Apt 358 Spectrum, Block 7, M3 7BY
£1,150 Per Month



Spectrum Blackfriars Road M3 7BY

£1,150 Per Month




The Property

Available Mid October. Corner Aspect, one bedroom apartment in Dandara's highly popular Spectrum development. This high specification apartment benefits from modern kitchen with integrated dishwasher, fridge and freezer and washer/dryer. The bedroom has integrated wardrobes and there is a large corner balcony . SECURE PARKING SPACE INCLUDED Furnished. Professionals Only. Tax Band B. EPC Rating B. Short walk to Deansgate and Spinningfields.

VIDEO/ PHOTO OFFERS NOT ACCEPTED - PLEASE CALL TO BOOK A VIEWING

- Available Mid October
- One Bedroom Apartment
- Fully Furnished
- EPC Rating B
- Council Tax Band B
- Close to City Centre
- Corner Balcony
- Parking



Energy Efficiency Rating		
	Current	Potential
Very energy efficient - lower running costs		
(92 plus) A		
(81-91) B	81	86
(69-80) C		
(55-68) D		
(39-54) E		
(21-38) F		
(1-20) G		
Not energy efficient - higher running costs		
England & Wales	EU Directive 2002/91/EC 	





These particulars are believed to be accurate but they are not guaranteed and do not form a contract. Neither Jordan Fishwick nor the vendor or lessor accept any responsibility in respect of these particulars, which are not intended to be statements or representations of fact and any intending purchaser or lessee must satisfy himself by inspection or otherwise as to the correctness of each of the statements contained in these particulars. Any floorplans on this brochure are for illustrative purposes only and are not necessarily to scale.

Offices at: Offices at Chorlton, Didsbury, Disley, Hale, Glossop, Macclesfield, Manchester Deansgate, Manchester Whitworth Street, New Mills, Sale, Wilmslow and Withington