



Jordan fishwick

10 The Stable Yard, Withington, M20 3WH
£2,000 Per Calendar Month



The Stable Yard Manchester M20 3WH

£2,000 Per Calendar Month




The Property

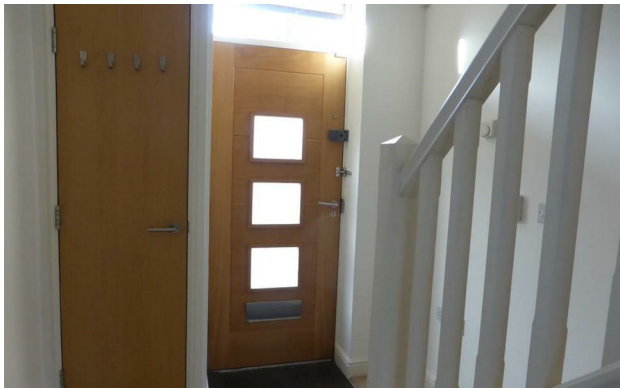
*** AVAILABLE OCTOBER *** A superb townhouse situated within an exclusive development in Withington. Perfect for a family, couple or professional sharers and ideally situated close to all local bars, restaurants and transport routes. In brief the accommodation comprises; entrance hall, downstairs W.C, lounge, fitted kitchen/diner with high gloss units and built in appliances. To the upper floors are four double bedrooms and two bathrooms. Externally there is allocated parking for one car and garden to the rear. Fully Furnished. To view contact our Withington branch on 0161 4382411

EPC Rating - C

- Available October
- Four Bedrooms
- Two Bathrooms
- Furnished
- Ideal for Families, Couples or Sharers
- Great Location of Withington
- Rear Garden
- Parking for One Car
- Council Tax Band E
- EPC Rating C



Energy Efficiency Rating		
	Current	Potential
Very energy efficient - lower running costs		
(92 plus) A		87
(81-91) B	76	
(69-80) C		
(55-68) D		
(39-54) E		
(21-38) F		
(1-20) G		
England & Wales		EU Directive 2002/91/EC 





These particulars are believed to be accurate but they are not guaranteed and do not form a contract. Neither Jordan Fishwick nor the vendor or lessor accept any responsibility in respect of these particulars, which are not intended to be statements or representations of fact and any intending purchaser or lessee must satisfy himself by inspection or otherwise as to the correctness of each of the statements contained in these particulars. Any floorplans on this brochure are for illustrative purposes only and are not necessarily to scale.

Offices at: Offices at Chorlton, Didsbury, Disley, Hale, Glossop, Macclesfield, Manchester Deansgate, Manchester Whitworth Street, New Mills, Sale, Wilmslow and Withington