



jordan fishwick

Summerfield Village Court Ringstead Drive,
Guide Price £194,950



Ringstead Drive Wilmslow SK9 2TG

Guide Price £194,950




Located within Summerfield Village Court this two double bedroom top floor (second floor) apartment is located a short drive away from Wilmslow centre. Wilmslow offers a wide range of shopping facilities, bars, restaurants, leisure centre and Wilmslow station which allows easy direct access to London Euston and Manchester City centre. The accommodation comprises a communal hallway and staircase leading to all floors and a private hallway with useful storage cupboard giving access to a further inner hallway. This inner hallway leads to the two double bedrooms, the large reception room and has a second large storage cupboard. The apartment is UPVC double glazed throughout and there is a generously proportioned living and dining room which is complemented by a bay window to the front aspect. Additionally there is a modern three-piece suite bathroom with electric shower and an airing cupboard. The kitchen is fitted with modern matching wall and base mounted units with a practical breakfast bar and has space for utilities/appliances which can be separately negotiated. Locally there are a wide choice of schools, alongside beautiful countryside. The property is well presented throughout with viewings essential to appreciate.



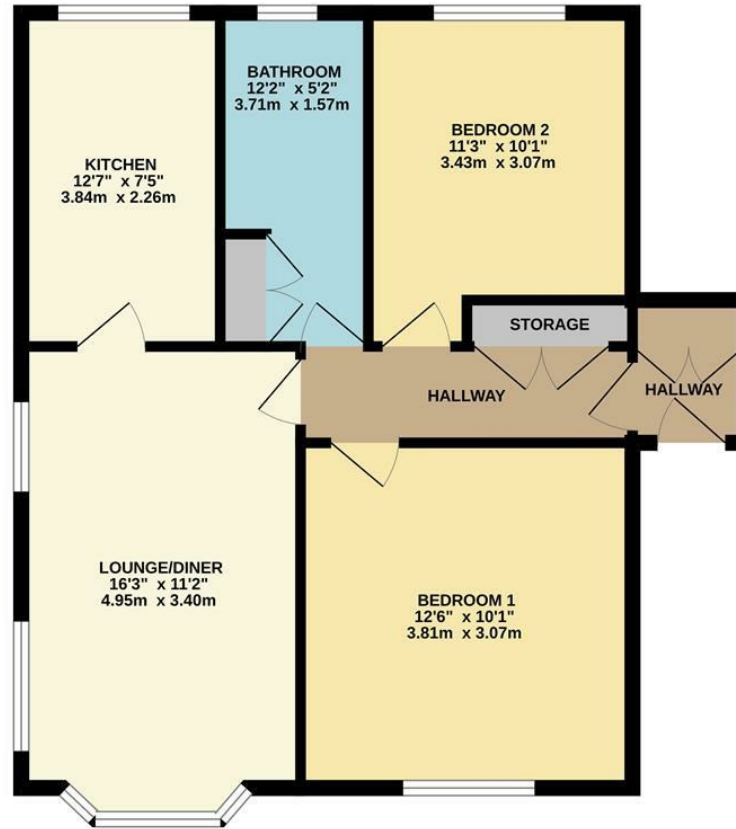
- Top Floor
- Two Double Bedrooms
- Close Proximity to Wilmslow
- Great Transport Links
- Residents Parking
- Modern Bathroom/Kitchen
- Large storage cupboards
- Central Heating



Energy Efficiency Rating		
	Current	Potential
Very energy efficient - lower running costs		
(92 plus) A		
(81-91) B		
(69-80) C	76	79
(55-68) D		
(39-54) E		
(21-38) F		
(1-20) G		
Not energy efficient - higher running costs		
England & Wales	EU Directive 2002/91/EC 	



GROUND FLOOR
669 sq.ft. (62.2 sq.m.) approx.



TOTAL FLOOR AREA: 669 sq.ft. (62.2 sq.m.) approx.
Measurements are approximate. Not to scale. Illustrative purposes only.
Made with Metropix ©2024



These particulars are believed to be accurate but they are not guaranteed and do not form a contract. Neither Jordan Fishwick nor the vendor or lessor accept any responsibility in respect of these particulars, which are not intended to be statements or representations of fact and any intending purchaser or lessee must satisfy himself by inspection or otherwise as to the correctness of each of the statements contained in these particulars. Any floorplans on this brochure are for illustrative purposes only and are not necessarily to scale.

Offices at: Chorlton, Didsbury, Disley, Hale, Glossop, Macclesfield, Manchester Deansgate, Manchester Whitworth Street, New Mills, Sale, Wilmslow and Withington

36-38 Alderley Road, Wilmslow, Cheshire, SK9 1JX
01625 532000

wilmslow@jordanfishwick.co.uk
www.jordanfishwick.co.uk