



Jordan fishwick

DIDSBURY
Riverside Court



Riverside Court, Didsbury, M20 2UF

£240,000



The Property

A STUNNING APARTMENT that has been COMPLETELY REFURBISHED THROUGHOUT, with spacious living space to include TWO EXCELLENT DOUBLE BEDROOMS, a south westerly facing BALCONY, secure GATED PARKING and a GREAT LOCATION which is within easy reach of West Didsbury, Didsbury and Northenden villages. Numerous other noteworthy features include a lovely living room, modern kitchen with a comprehensive range of units and tiled contemporary bathroom with separate walk in shower, generous entrance hall with storage space, gas central heating with recently fitted boiler & new flooring and new décor. The accommodation can be accessed from either the garden or car park entrances, where the gated allocated parking space can be found. No chain.

Directions

M20 2UF



- Stunning apartment
- Completely refurbished throughout
- Two excellent double bedrooms
- Modern kitchen with a range of units
- Generous living room & entrance hall
- South westerly facing balcony
- Gated allocated parking
- Close to Didsbury, West Didsbury & Northenden
- Council Tax Band - B / EPC Rating - C

Postcode - M20 2UF

EPC Rating - C

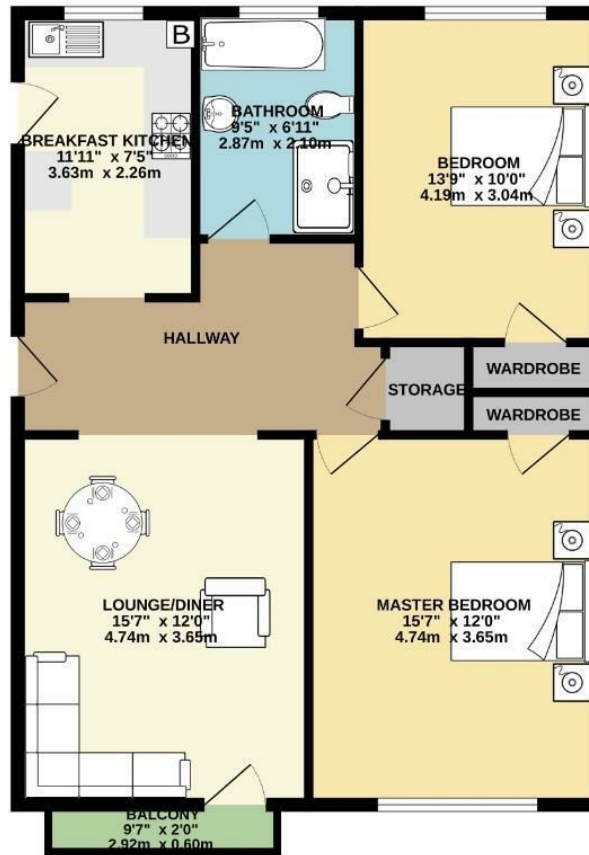
Floor Area - 806.00 sq ft

Local Authority - Manchester City Council

Council Tax - B



FIRST FLOOR
806 sq.ft. (74.8 sq.m.) approx.



TOTAL FLOOR AREA: 806 sq.ft. (74.8 sq.m.) approx.
Measurements are approximate. Not to scale. Illustrative purposes only.
Made with Metropix 62024



These particulars are believed to be accurate but they are not guaranteed and do not form a contract. Neither Jordan Fishwick nor the vendor or lessor accept any responsibility in respect of these particulars, which are not intended to be statements or representations of fact and any intending purchaser or lessee must satisfy himself by inspection or otherwise as to the correctness of each of the statements contained in these particulars. Any floorplans on this brochure are for illustrative purposes only and are not necessarily to scale.

Offices also at: Wilmslow, Macclesfield, Hale, Sale, Chorlton, Glossop, Manchester & Salford

757-759 Wilmslow Road, Didsbury Village, Manchester

0161 445 4480

didsbury@jordanfishwick.co.uk
www.jordanfishwick.co.uk